

Multi-screen Solutions

Wishbone

THE WISHBONE FAMILY



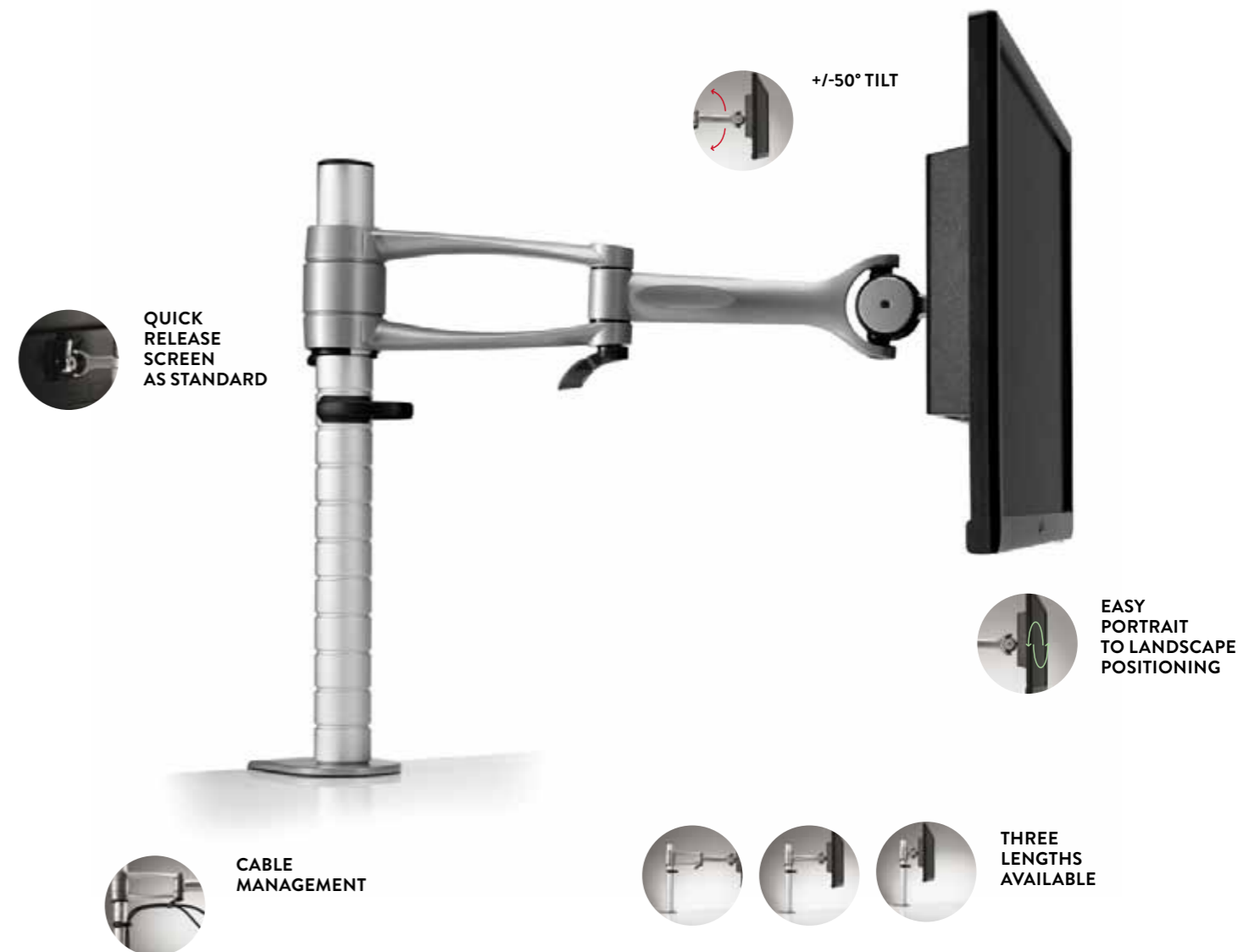
The Wishbone family meets all multi-screen requirements. An iconic design since 1999, Wishbone has won numerous product design and innovation awards the world over.

Wishbone was the product that broke the mould, the original flat screen monitor arm. Since setting this new standard back in 1999, the Wishbone range has gone from strength to strength, evolving, innovating, and adapting to the rapidly changing workplace and the challenges presented by the requirement to display large volumes of information on multiple screens.

The reliability and adaptability of Wishbone has made it a favourite among trading floors, financial institutions, control rooms and multi-media environments. The modular nature of the range ensures that users are easily able to configure, add to, and customise Wishbone arms to suit their unique working environment.

Adjustable and easy to install, it is no surprise that Wishbone continues to be one of the best-selling monitor arms in the world.

The innovative features of Wishbone set it apart from the competition



Colebrook Bosson Saunders (CBS) are award-winning designers and manufacturers of high quality ergonomic products for supporting technology in the workplace.

Our product range includes computer monitor arms; CPU holders; laptop and tablet supports; AV/VC stands and cable management systems.

With a strong reputation for design and quality, CBS has won multiple awards including two red dot design awards, and secured ISO 9001 and ISO 14001 accreditation.



reddot design award
winner 2011



KEY FEATURES OF THE WISHBONE FAMILY

- Unmatched adaptability and versatility
- Tool-less
- Built to last with a lifetime warranty of 12 years
- Manually height adjustable
- Easy to position from portrait to landscape orientation
- Available in three lengths
- Fully articulated in both front to back and side to side positions
- Cable management
- Environmentally friendly; 99 per cent recyclable
- Integral Fine Height Adjuster ensures accurate screen positioning when aligning multiple screens (Wishbone Plus and Wishbone Dual Post Mount)
- Easy to install and retrofitable
- Excellent ergonomics
- Designed to adapt to each user's personal preferences ensuring good ergonomic posture

Meet the Wishbone family.



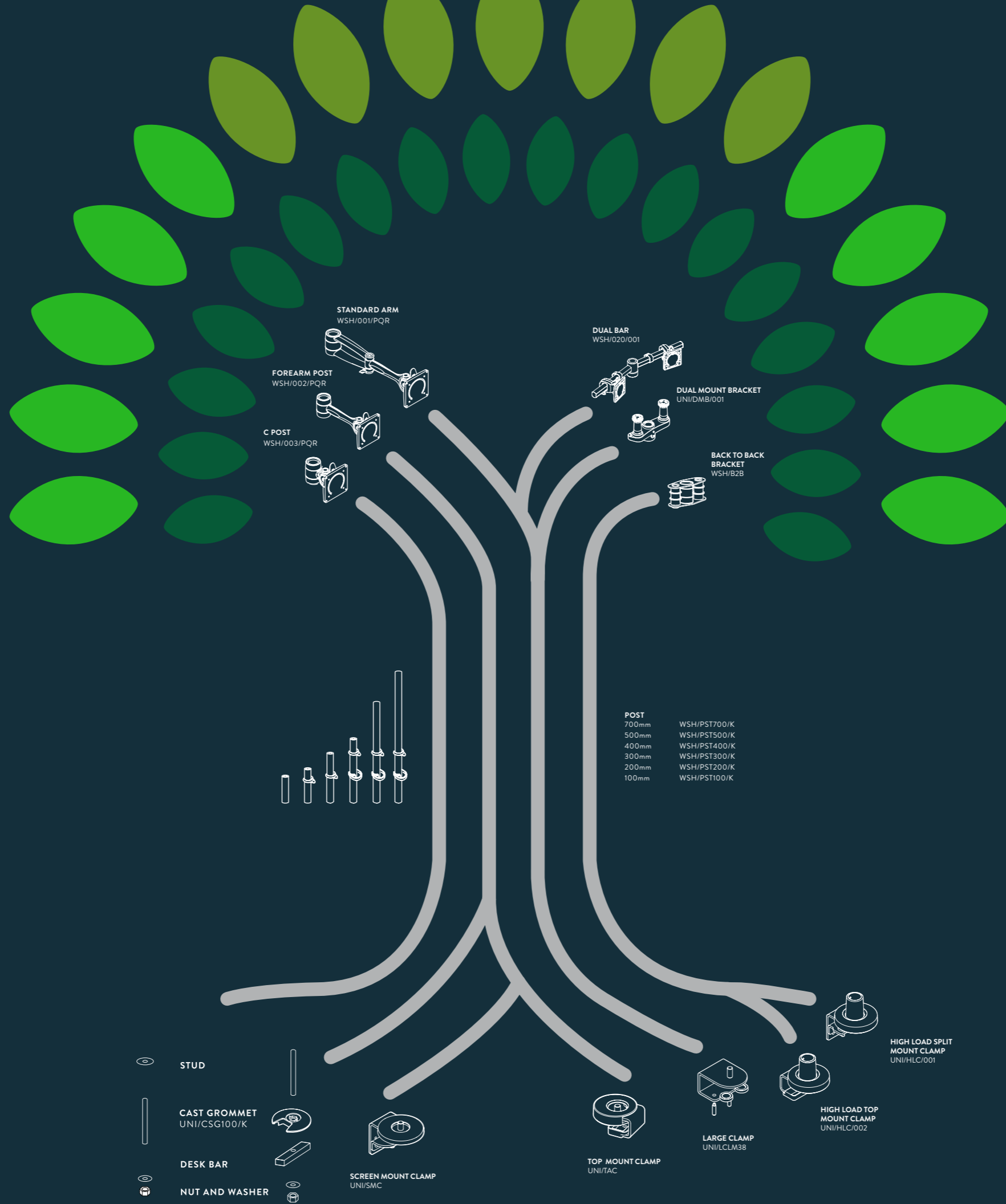
Wishbone

Available in three lengths, Wishbone provides a flexible range of options. It can be installed at a range of heights and configurations to create the ideal set-up according to specification.



Wishbone Plus

Can support monitors up to a weight range of 24kg ensuring it can comfortably hold the heaviest displays on the commercial market.



Wishbone Dual Mount Bracket

For a flexible dual screen solution that enables the user to adjust the workstation according to work dependency and application type.

One display can be moved into a more prominent position for primary dependency with the other screen supporting, or both screens can display information equally.



Wishbone Dual Bar

Perfect for holding two screens of equal size and dependency in position.

DUAL SCREEN SETUP



Dual Bar

THREE SCREEN SETUP

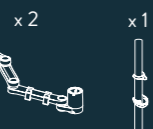


ICONIC DESIGN

CBS set the standard for multi-screen arms in the 1990s when it developed the world's first flat screen monitor arm – Wishbone.



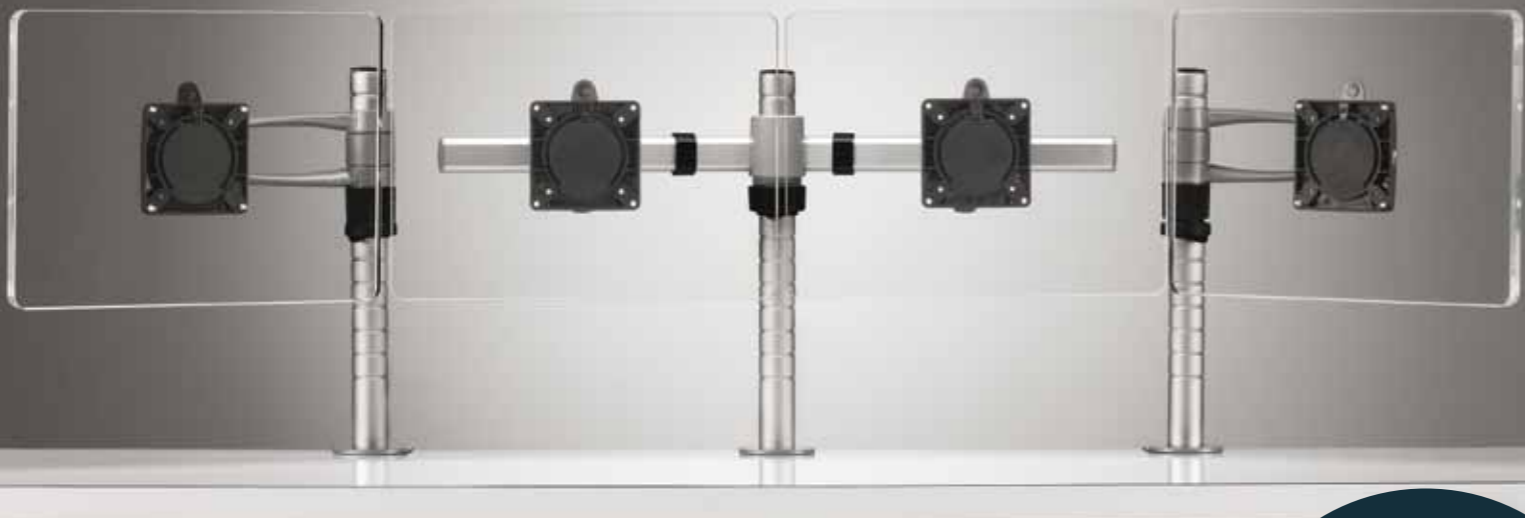
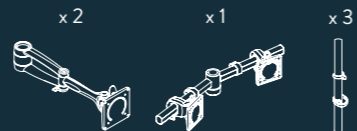
daisyone.



Back to Back Bracket



FOUR SCREEN SETUP



SIX SCREEN SETUP

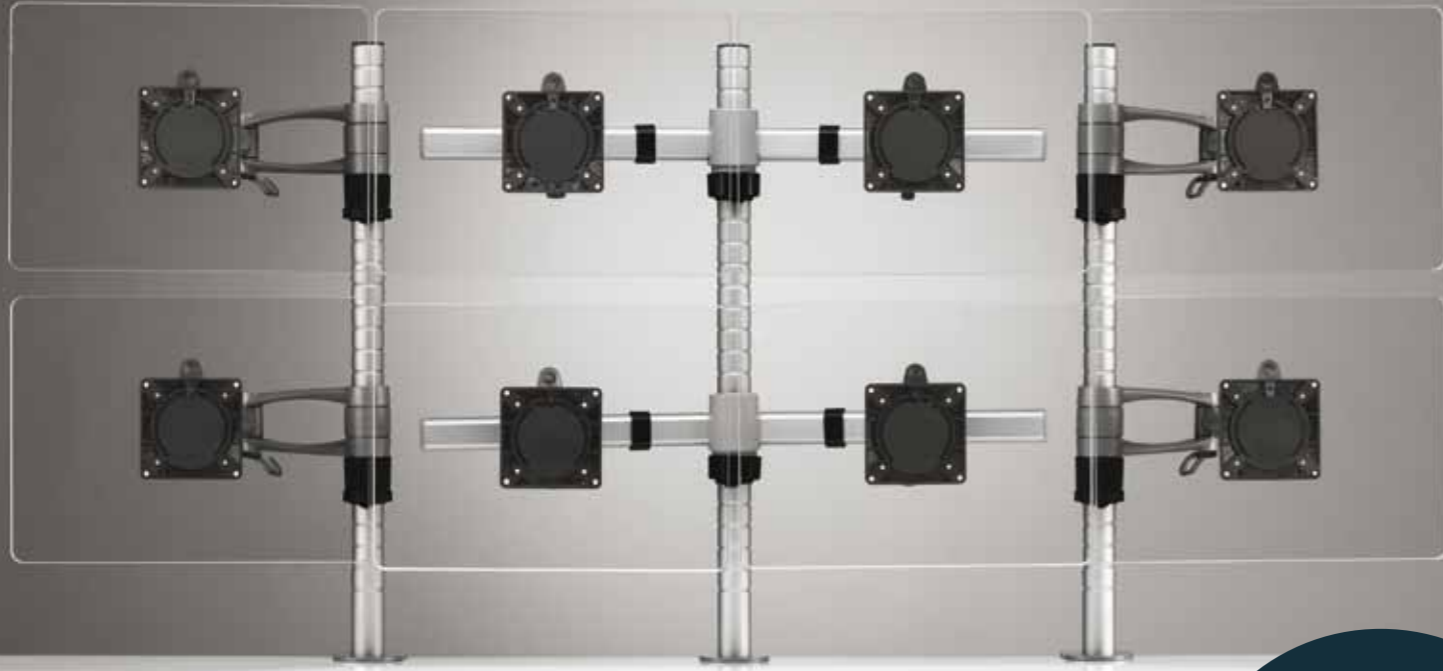
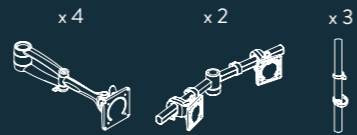


UNMATCHED ADAPTABILITY

A comprehensive solution for any multi-screen setup, it can be fixed to any surface and can be configured to fit the needs of the individual and their working environment.



EIGHT SCREEN SETUP



BUILT TO LAST

With a lifetime warranty (12 years), Wishbone provides a sound future investment for your workplace setup.



1. VTB Bank
2. Home Working - Laurie Yu
3. VTB Bank



RECENT CLIENTS INCLUDE:

2012 Olympic Headquarters
Bank of England
BBC
BMW
BP
British Airways
Deloitte
Deutsche Bank
Diageo
Financial Times
Glaxo Smithkline
Goldman Sachs
HSBC

ING Bank
JP Morgan
KPMG
London Heathrow Airport
Nomura
Reuters
Royal Bank of Scotland
Societe Generale
UBS
Unilever
Vodafone
Wembley Stadium

+44 (0)20 7940 4266
info@cbsproducts.co.uk
www.colebrookbossonsaunders.com