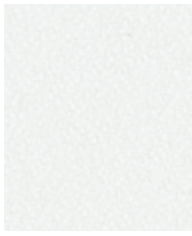


Xtreme



Adobo
YS165



Manado
YS166



Aruba
YS108



Solano
YS072



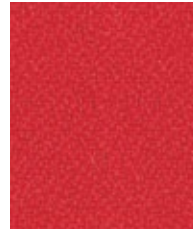
Tortuga
YS168



Sandstorm
YS071



Bridgetown
YS102



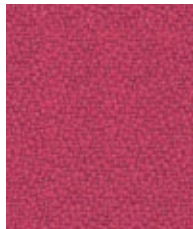
Belize
YS105



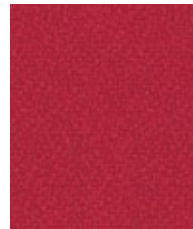
Lobster
YS076



Nougat
YS091



Diablo
YS101



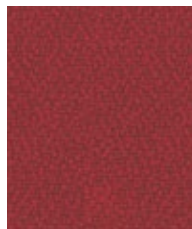
Panama
YS079



Jamaica
YS027



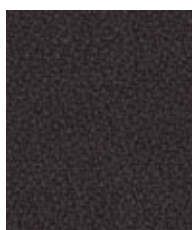
Nicobar
YS158



Calypso
YS106



Tokara
YS136



Bounty
YS086



Tarot
YS084



Tobago
YS030



Madura
YS156



Apple
YS096



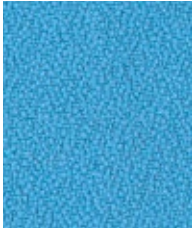
Orchilla
YS167



Rum
YS173



Campeche
YS074



Parasol
YS073



Slip
YS094



Lombok
YS159



Tonga
YS160



Buru
YS170



Blizzard
YS081



Windjammer
YS047



Montserrat
YS011



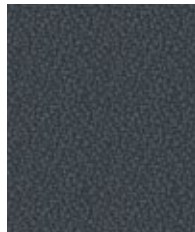
Osumi
YS171



Krabi
YS141



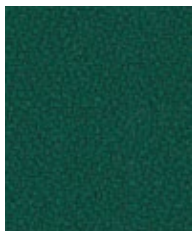
Appledore
YS077



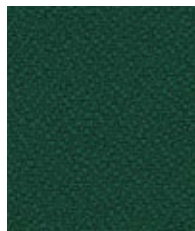
Twister
YS083



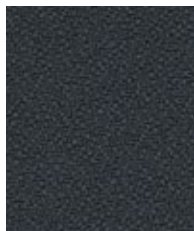
Sombrero
YS046



Taboo
YS045



Flores
YS161



Bonaire
YS172



Padang
YS145

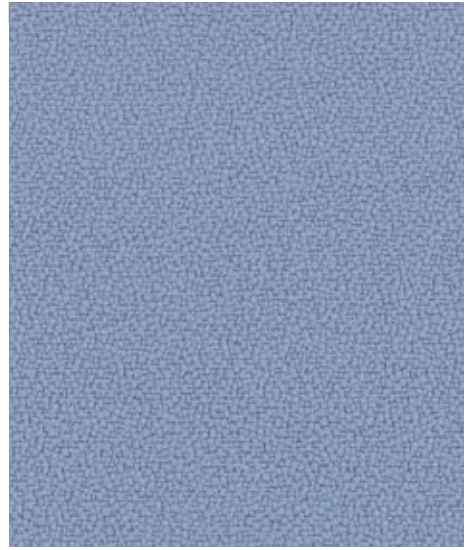
Note: Photographic fabric scans are not color accurate. Always request actual fabric samples before ordering.



Arecibo
YS174



Marianna
YS157



Steel
YS095



Anguilla
YS169



Bluebell
YS097



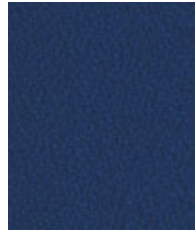
Martinique
YS004



Mauve
YS069



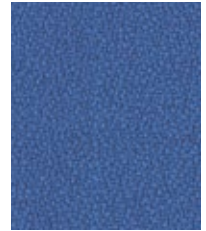
Honeymoon
YS035



Scuba
YS082



Curacao
YS005



Bluefield
YS021



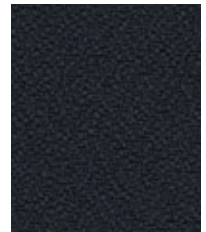
Ocean
YS100



Navassa
YS162



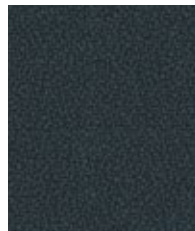
Cayman
YS024



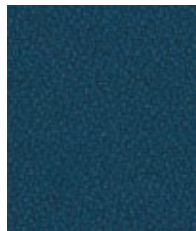
Andaman
YS144



Leeward
YS164



Arawak
YS016



Costa
YS026



Havana
YS009

Technical information

E	F	ES	D	DK	I
Composition 100% Recycled Flame Retardant Polyester. Non metallic dyestuffs.	Composition 100% Polyester retardateur de flamme recyclé. Teintures non métalliques.	Composición 100% Resistente al fuego Poliéster Reciclado. Tintes no metálicos.	Zusammensetzung 100% Recycelte schwerenflammbare Polyester. Nicht schwermetallhaltige Farbstoffe	Materiale 100% Genanvendt Polyester Flammehæmmende. Ikke metaliske farvestofte	Composizione 100% Flame Retardant Poliestere Riciclata. Tinture prive di metalli pesanti
Environmental Made from 100% recycled polyester. Certified to the EU Ecolabel.	Écologique Fabriqué d'un polyester 100% recycle avec le certificat EU Ecolabel.	Ambiental Hecho de 100% de poliéster reciclado. Certificado con EU Flower.	Umweltfreundlich Recycelte / EU Flower zertifiziert	Millieu Genanvendt / EU Blomst certificeret	Ambientale Riciclata / Conforme alla normativa EU Flower
Width 54 inches minimum	Largeur 54 pouces minimum	Ancho 54 pulgadas mínimo	Gewicht Mindestens 54 Zoll	Bredde 54 pouces minimum	Altezza 54 pollici minimo
Weight 9 ^{1/4} oz/sq yd ±5% (14 oz/running yard ±5%)	Poids 9 ^{1/4} oz/sq yd ±5% (14 oz/running yard ±5%)	Peso 9 ^{1/4} oz/sq yd ±5% (14 oz/running yard ±5%)	Breite 9 ^{1/4} oz/sq yd ±5% (14 oz/running yard ±5%)	Vægt 9 ^{1/4} oz/sq yd ±5% (14 oz/running yard ±5%)	Peso 9 ^{1/4} oz/sq yd ±5% (14 oz/running yard ±5%)
Abrasion Resistance Meets the ACT Standard for Heavy Duty Upholstery (ASTM D4157 Wyzenbeek method) 100,000 Martindale cycles (BS EN ISO 12947-2:1999) Covered by a comprehensive 10 year wear warranty (full details available)	Résistance à l'abrasion ASTM D4157 Wyzenbeek method. Heavy Duty Upholstery 100,000 Martindale Tours (BS EN ISO 12947-2:1999) Avec une garantie totale de durabilité de 10 ans (renseignements complémentaires disponibles)	Resistencia a la abrasión ASTM D4157 Wyzenbeek method. Heavy Duty Upholstery 100,000 Martindale ciclos (BS EN ISO 12947-2:1999) Con garantía total de uso 10 años (más información disponible bajo consulta)	Scheuerfestigkeit Meets the ACT Standard for Heavy Duty Upholstery (ASTM D4157 Wyzenbeek method) 100,000 Martindale cycles (BS EN ISO 12947-2:1999) 10 Jahre Garantie (Details auf Anfrage)	Slidstyrke ASTM D4157 Wyzenbeek method. Heavy Duty Upholstery 100,000 Martindale Tours (BS EN ISO 12947-2:1999) 10 års garanti (udførlig beskrivelse af garantien kan rekvireres)	Resistenza all'abrasione ASTM D4157 Wyzenbeek method. Heavy Duty Upholstery 100,000 Martindale ciclos (BS EN ISO 12947-2:1999) Garanzia di 10 anni (dettagli disponibili)
Flammability California Technical Bulletin 117, Section E UFAC Class 1 BS 7176 : 2007 Low Hazard BS 7176 : 2007 Medium Hazard <i>Note: Flammability performance is dependent on foam used.</i>	Flammabilité California Technical Bulletin 117, Section E UFAC Class 1 BS 7176 : 2007 Low Hazard BS 7176 : 2007 Medium Hazard <i>Note: Réaction au feu dépend de la mousse utilisée.</i>	Inflamabilidad California Technical Bulletin 117, Section E UFAC Class 1 BS 7176 : 2007 Low Hazard BS 7176 : 2007 Medium Hazard <i>Condiciones ignifugas dependientes del tipo de foam utilizado.</i>	Feuersicherung California Technical Bulletin 117, Section E UFAC Class 1 BS 7176 : 2007 Low Hazard BS 7176 : 2007 Medium Hazard <i>Bemerkung: Schwerentflammbarkeit hängt von verwendetem Schaum ab.</i>	Flammesikring California Technical Bulletin 117, Section E UFAC Class 1 BS 7176 : 2007 Low Hazard BS 7176 : 2007 Medium Hazard <i>Bemærk: Flammesikkerheden er afhængig af anvendt skumtype</i>	Resistenza al fuoco California Technical Bulletin 117, Section E UFAC Class 1 BS 7176 : 2007 Low Hazard BS 7176 : 2007 Medium Hazard <i>Nota: Il grado di resistenza al fuoco dipende dal tipo di schiuma utilizzata</i>
Light Fastness AATCC-16 (40 hours)	Solidité à la lumière AATCC-16 (40 heures)	Solidité à la lumière AATCC-16 (40 heures)	Reibechtheit AATCC-16 (40 hours)	Lysægthed AATCC-16 (40 heures)	Solidità alla luce AATCC-16 (40 heures)
Fastness to Rubbing AATCC-8 (Dry: 4 minimum, Wet: 3 minimum)	Crocking AATCC-8 (Sec: 4 minimum, Mouillé: 3 minimum)	Crocking AATCC-8 (Sec: 4 minimum, Mouillé: 3 minimum)	Reibechtheit AATCC-8 (Nass: 4 minimum, Trocken: 3 minimum)	Gnidægthed AATCC-8 (Våd: 4 minimum, Tør: 4 minimum)	Resistenza allo sfregamento AATCC-8 (Umido: 4 minimo, Secco: 4 minimo)
Cleaning W	Nettoyage W	Limpieza W	Reinigung W	Farvedifferencer W	Manutenzione W
<p>Please note that seam performance is dependent on seam construction and needle and thread type. We recommend that appropriate sewing advice be taken.</p> <p>Note: Batch to batch variations in shade may occur within commercial tolerances. We reserve the right to alter technical specifications without notice. The Unregistered Design Rights and the Copyright in all designs are the exclusive property of Camira Fabrics Limited.</p>	<p>Veillez noter que la performance du joint dépend de sa construction ainsi que de l'aiguille et du type de fil utilisés.</p> <p>Remarque: Une variation de couleurs peut provenir (commerciallement tolérable). Nous réservons le droit de changer les spécifications techniques sans préavis. Les Droits de Conception non-enregistrés et les droits d'auteur de tous les motifs sont la propriété exclusives de Camira Fabrics Limited.</p>	<p>Tenga en cuenta que el rendimiento de la costura depende de la construcción de la costura, además de la aguja y del tipo de rosca. Le recomendamos que se aconsejen para coser la costura.</p> <p>Nota: Las variaciones de lote a lote en la sombra se puede producir dentro de tolerancias comerciales. Nos reservamos el derecho a efectuar modificaciones técnicas sin previo aviso. Los derechos sobre los diseños no registrados y los derechos de autor en todos los diseños son propiedad exclusiva de Camira Fabrics Limited.</p>	<p>Eine optimale Nahtausreissfestigkeit hängt von der Nahtfahne, der verwendeten Nadel und dem Näh-Garn ab. Wir empfehlen daher Nähveruche durchzuführen.</p> <p>Wichtig: Handelsübliche Farbabweichungen können auftreten und berechtigen nicht zur Reklamation. Wir behalten uns die Änderung technischer Spezifikationen vor. Die registrierten und nicht registrierten Urheberrechte der Dessinierungen sind ausschliessliches Eigentum der Camira Fabrics Limited</p>	<p>Yderligere information kan fås på forespørgsel. Vær opmærksom på, at optimal sømglidning er afhængig af søm-, nål- og trådtype. Vi anbefaler, at du følger relevante sy-instruktioner.</p> <p>Bemærk: Vi forbeholder os retten til at ændre tekniske specifikationer uden varsel. De uregistrerede designrettigheder og ophavsretten til alle designs tilhører ubetinget Camira Fabrics Limited.</p>	<p>Le performance cucitura dipende cuciture e l'ago e il tipo di filo. Opportuno che Consigliamo consigli di cucito da adottare.</p> <p>Nota: Variazioni tra diversi lotti in tolleranza ombra possono verificarsi entro commerciale. Ci riserviamo il diritto di apportare modifiche tecniche senza preavviso. I non registrati di progettazione e i diritti e il Copyright in tutti i disegni sono di esclusiva proprietà di Camira Fabrics Limited.</p>

camira

sediasystems 

1820 W. Hubbard Street
 Suite 300
 Chicago, IL 60622
 866.892.6130
 www.sediasystems.com
 info@sediasystems.com