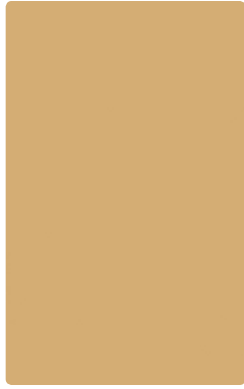


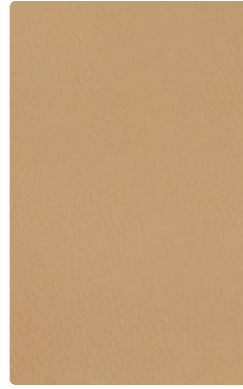
Coated Fabrics



Foray Cane



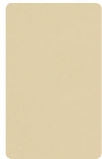
Canter Safari



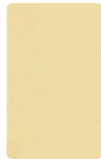
Silica Brownstone



Beeline Portobello



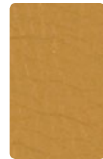
Eucalyptus



Dew



Sand



Saddle



Sands



Burnished



Canvas



Sisal



Pebble



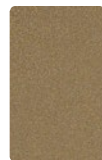
Citron



Earth



Nimbus



Quartz



Dewpoint



Sprout



Geyser



Artichoke



Camel



Chestnut



Alfalfa



Aqua



Appletini



Eucalyptus



Cork



Quarry



Clay



Mica



Willow



Coppercrest



Regatta



Fossil



Nimbus



Mineral



Aubergine



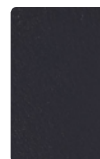
Night



Tawny



Cloak



Gallant



Oriole



Tidal



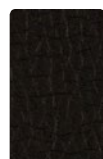
Woodland



Cinder



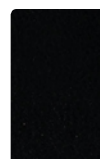
Sable



Onyx



Terra



Nero



Walnut



Eclipse

TECHNICAL INFORMATION

54" Pattern	Fiber Content & Backing	Finish	Abrasion (D.R.)	Light-fastness	Cleaning Code	Grades
BEELINE ☼ ☼ ☼ ☼ ☼ *	100% Polyurethane / PVC Free Polyester Backing	Anti-microbial, Anti-bacterial	500,000	40 Hrs. Class 4.5	W Bleach Cleanable (4:1)	2
CANTER ☼ ☼ ☼ ☼ ☼ *	100% Polyurethane / PVC Free Polyester Backing	Anti-microbial, Anti-bacterial	240,000	40 Hrs. Class 4.5	W Bleach Cleanable (4:1)	2
FORAY ☼ ☼ ☼ ☼ ☼ *	100% Polyurethane / PVC Free Polyester Backing	Resilience ^{SR}	714,000	40 Hrs. Class 4	W Bleach Cleanable (10:1)	3
SILICA ☼ ☼ ☼ ☼ ☼ *	100% Silicone Polyester Backing		365,000	200 Hrs. Class 4.5	WS Bleach Cleanable (4:1)	6

*ACT[®] Registered Certification Marks

Cleaning codes: W - Water-based foam or cleaner.

WS - Water-based cleaning agents or foam.



In 5 simple clicks, you can find hundreds of pre-approved, in grade, and in stock fabrics.

MOMENTUM
T E X T I L E S

800-366-6839
memosamples.com



1820 W. Hubbard Street
Suite 300
Chicago, IL 60622
866.892.6130
www.sediasystems.com
info@sediasystems.com