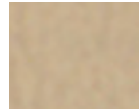


WHISPER™
SILVERTEX®
DOLCE™
HITCH™

WHISPER™ - GRADE 1



WHI-2150 FAWN



WHI-2141
CASHEW



WHI-2117
BONE



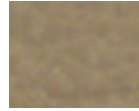
WHI-2156
PUTTY



WHI-2157
FOG



WHI-2134
PATINA



WHI-2119
GRAVEL



WHI-2158
CUCUMBER



WHI-2159
ZEST



WHI-2160
SASSAFRAS



WHI-2161
MALLARD



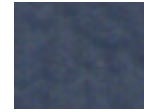
WHI-2120
ANTELOPE



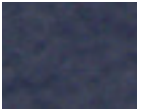
WHI-2162
PARADISE



WHI-2163
INDIGO



WHI-2136
CERULEAN



WHI-2137
NAVY



WHI-2118
CAMEL



WHI-2142
COGNAC



WHI-2123
LUGGAGE



WHI-2125
CINNAMON



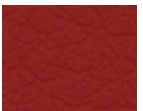
WHI-2164
CAROTENE



WHI-2165
MOLTEN



WHI-2124
SALSA



WHI-2126
BORDEAUX



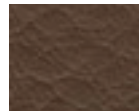
WHI-2121
CAPPUCCINO



WHI-2151
OCHRE



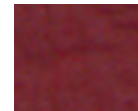
WHI-2152
MAHOGANY



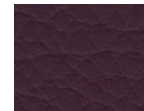
WHI-2153
TRUFFLE



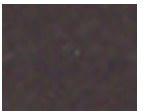
WHI-2166
BRICK RED



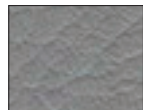
WHI-2127
MERLOT



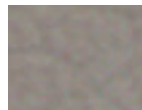
WHI-2144
SANGRE



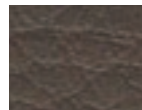
WHI-2143
ESPRESSO



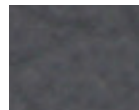
WHI-2154
PEWTER



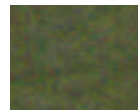
WHI-2138
ELEPHANT



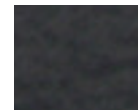
WHI-2155
STORM



WHI-2139
CHARCOAL

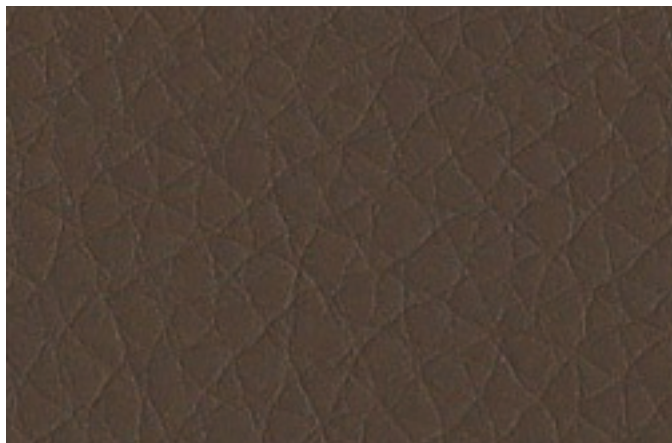


WHI-2129
FOREST

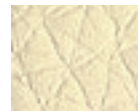


WHI-2140
BLACK

DOLCE™ - GRADE 2



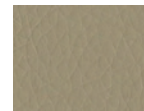
DOL-6712 MOCHA



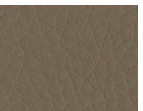
DOL-6702
IVORY



DOL-6703
ECRU



DOL-6715
FOG



DOL-6716
BRAMBLE



DOL-6705
SAND



DOL-6706
LATTE



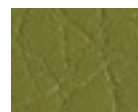
DOL-6707
CUMIN



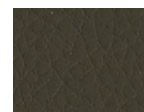
DOL-6708
MUSHROOM



DOL-6721
CITRON



DOL-6722
GRASS



DOL-6717
MOSS



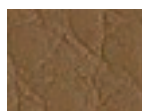
DOL-6713
CHOCOLATE



DOL-6704
DUNE



DOL-6709
CAMEL



DOL-6710
LION



DOL-6711
RUSSET



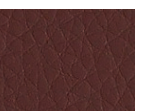
DOL-6718
TANGELO



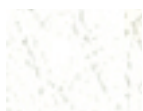
DOL-6719
POPPY



DOL-6720
FUCHSIA



DOL-6714
BURGUNDY



DOL-6701
WHITE



DOL-6726
ARTESIAN



DOL-6727
METEOR



DOL-6728
BLACK



DOL-6725
INDIGO

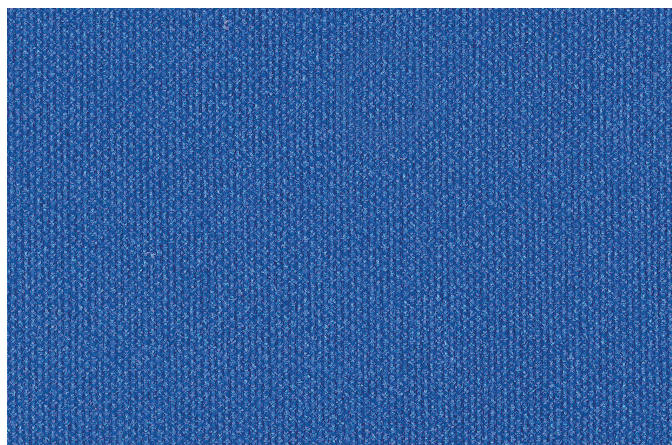


DOL-6724
JET

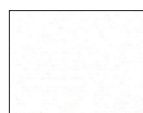


DOL-6723
PEACOCK

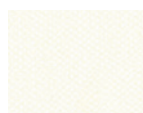
SILVERTEX® - GRADE 2



STX-8801 MARINE BLUE



STX-8806
ICE



STX-8807
CREAM



STX-8802
LAGOON



STX-8803
TURQUOISE



STX-8839
PLATA



STX-8822
STORM



STX-8804
SAPPHIRE



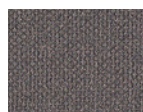
STX-8805
JET



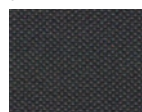
STX-8840
STERLING



STX-8830
NEUTRA



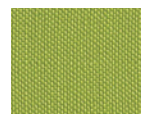
STX-8824
METEOR



STX-8823
CARBON



STX-8833
CRÈME DE MENTHE



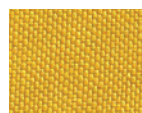
STX-8834
ACID



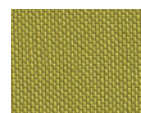
STX-8820
BASIL



STX-8821
BOTTLE



STX-8842
LIMONCELLO



STX-8841
ZEST



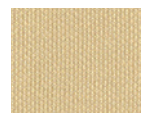
STX-8819
CELERY



STX-8818
SAGE



STX-8837
BAZAAR



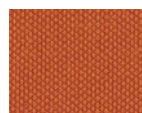
STX-8808
CHAMPAGNE



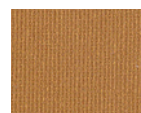
STX-8831
MARSH



STX-8835
PEAT



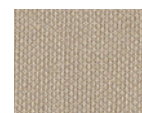
STX-8811
MANDARIN



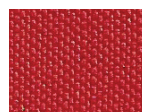
STX-8810
CHESTNUT



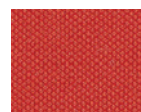
STX-8832
BRONZE



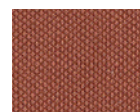
STX-8809
TAUPE



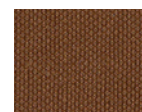
STX-8838
IMPERIAL



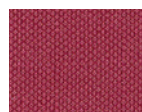
STX-8812
SUNKIST



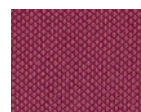
STX-8814
UMBER



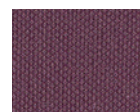
STX-8813
LUGGAGE



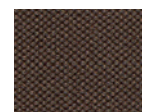
STX-8815
BORSCHT



STX-8816
RASPBERRY

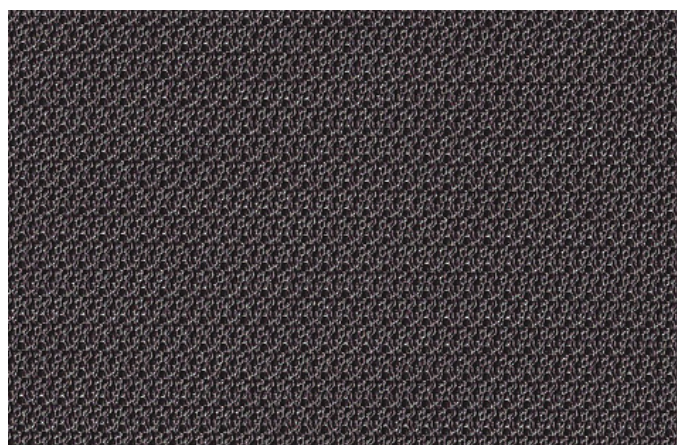


STX-8817
BLACKBERRY

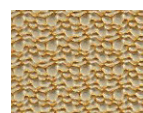


STX-8825
MOCHA

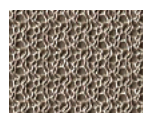
HITCH™ - GRADE 2



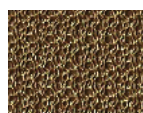
HIT-8901 METEORITE



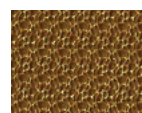
HIT-8909
SUNFLOWER



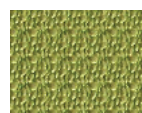
HIT-8912
PUTTY



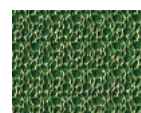
HIT-8908
BRONZE



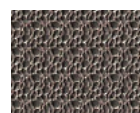
HIT-8905
SAFFRON



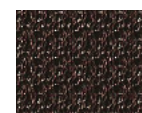
HIT-8913
ZEST



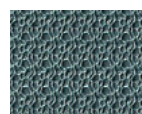
HIT-8917
FIESTA



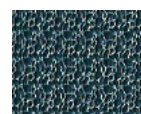
HIT-8916
NEUTRA



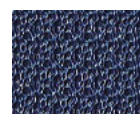
HIT-8920
JAVA



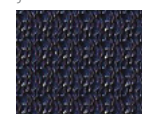
HIT-8906
WATER



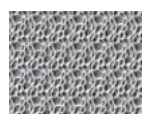
HIT-8910
CARIBBEAN



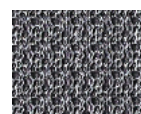
HIT-8914
SAPPHIRE



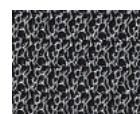
HIT-8918
INDIGO



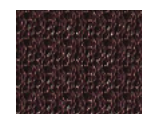
HIT-8902
FOG



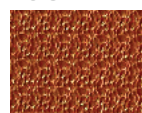
HIT-8903
PLATINUM



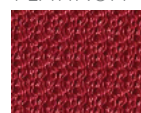
HIT-8904
CARBON



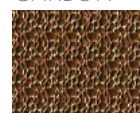
HIT-8919
CORDOVAN



HIT-8911
BRILLIANT
ORANGE



HIT-8915
LAVA



HIT-8907
CARAMEL

Content | Backing | Specifics

	Dolce	Hitch	Silvertex	Whisper
Vinyl Urethane Topcoat		•	•	•
100% Polyurethane	•			
100% Rayon Backing	•			
Hi-Loft ² ™ Backing			•	•
Ultra Hi-Loft™ Backing		•		
Weight (oz.)	15	27	30	27
Width (in.)	54	54	54	54
Roll Size (yd.)	30	30	30	30

Flame Retardancy*

	DOL	HIT	STX	WHI
Boston Fire Code - BFD IX-1			•	
Federal Aviation Spec FAR 25.853(a) Appendix F, Part I (a)(1)(ii)			•	
Federal St. 191A M 5903.1			•	
Port Authorities of NY and NJ			•	
UFAC - Class I	•	•	•	•
IMO FTP 2010 Code MSC. 307(88) Part 8, 3.1 & 3.2	•	•	•	•
NFPA 260 - Class I	•	•	•	•
FMVSS 302	•	•	•	•
California T.B. 117- 2013	•	•	•	•

Finishes | Characteristics



	DOL	HIT	STX	WHI
Napa Finish		•	•	
Antibacterial		•	•	•
Antifungal Mildew Resistant		•	•	•
Stain Resistant		•	•	
No Heavy Metals	•	•	•	•
Formaldehyde Free	•	•	•	•
Polycarbonate Resin System	•			

Performance

	DOL	HIT	STX	WHI
Abrasion - CFFA 1-a, ASTM D-4157: Wyzenbeek #10 Cotton Duck	100K	75K	100K	100K
Cold Crack	-10°F	-10°F	-10°F	-10°F
UV Stabilized Pigments: Xenotest: AATCC Blue Wool: 1,000 hrs		•	•	•
UV Stabilized Pigments: QUV: ASTM Grey Scale: 650 hrs		•		
Exclusively Interiors	•			•
Exterior Approved		•		

Care and Cleaning Guides

Dolce and Whisper:

Step 1: For light soiling, a solution of 10% household liquid dishsoap in warm water, applied with a soft damp cloth. Rinse with clean water and dry.

Step 2: For heavy soiling, dampen a soft white cloth with a one to one (1:1) solution of Fantastik® and water or Formula 409® and water. Rub gently and rinse with a water dampened cloth.

Step 3: For more difficult stains, dampen a soft white cloth with a solution of household bleach (10% bleach / 90% water). Rub gently and rinse with a water dampened cloth to remove bleach concentration.

Do not use with alcohol-based cleaning agents!

Hitch and Silvertex:

Step 1 (eye shadow, mascara, grease, black felt tip pen, crayon, chocolate, suntan lotion, hair and body oils*):

Remove excess spill with a damp cloth. Clean with a 1:1 mix of Ivory® liquid soap and water. Next, rinse with clean water and dry.

Step 2 (red lipstick):

Use a straight application of concentrated cleaners such as Formula 409® or Fantastik® spray cleaner. Wipe with a clean cloth, rinse with water, and dry.

Step 3 (blood, urine, feces, oil base paint, tar, and asphalt):

Use a 1:1 mix of ammonia and water, or a 1:4 mix of bleach and water. Rinse with clean water and dry.

Steps 4 (all other tough stains):

Use a 1:1 mix of isopropyl alcohol and water. If the stain persists, use straight alcohol. Rinse thoroughly with clean water and pat dry.

Note: For cleaning that requires step 4, use a soft cotton cloth saturated with the cleaning material and rub the stain in circles 10 times. Pat dry with another soft cotton cloth and check the results.

©2016 Spradling International, Inc.®

The information published in this care guide refers to the performance of PERMABLOK³® products in specific tests conducted under laboratory conditions.

Results may vary under actual conditions.

This information is not a guarantee and does not relieve the user from the responsibility of the proper and safe use of the product and all cleaning agents. The use of certain agents can be harmful to the surface appearance and lifespan of vinyl. Spradling, its agents, and assigns assume no responsibility resulting from the use of such cleaning agents to the vinyl. Please check compatibility when using this product in combination with painted or varnished surfaces.

Spradling International is not sponsored by, affiliated with, or endorsed by such trademark owners. Additionally, any use by Spradling International of any third-party trademark does not constitute any endorsement by Spradling International of such third party.

Hi-Loft²™ is a trademark of Spradling Holdings, Inc.®

Ultra Hi-Loft™ is a trademark of Spradling Holdings, Inc.®

SILVERGUARD® is a registered trademark of Spradling Holdings, Inc.®

PERMABLOK³® is a registered trademark of Spradling Holdings, Inc.®

SILVERTEX® is a registered trademark of Spradling Holdings, Inc.®

DOLCE™ is a trademark of Spradling Holdings, Inc.®

HITCH™ is a trademark of Spradling Holdings, Inc.®

WHISPER™ is a trademark of Spradling Holdings, Inc.®



This fabric meets or exceeds these ACT performance guidelines.

*Certification Marks owned by ACT®



1820 W. Hubbard Street
Suite 300
Chicago, IL 60622
866.892.6130
www.sediashsystems.com
info@sediashsystems.com