

Ultraleather® Collections

sediasystems



Ultraleather® | Pro

Antimicrobial protection • Ink and denim* resistant



554-4530 Coastal



554-0008 White Wash



554-3803 Parfait



554-3352 Shore



554-3444 Toasted Bagel



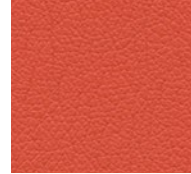
554-2711 Blueberry



554-3214 Chestnut



554-1357 Cranberry



554-8229 Campfire



554-4443 Laurel



554-5648 Cloud



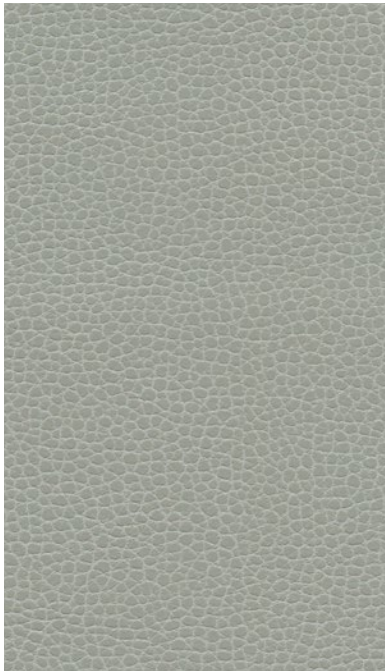
554-5626 Char



554-5618 Dark Knight

Ultraleather® | Promessa®

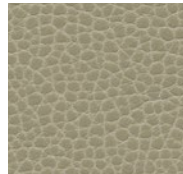
Antimicrobial protection



363-5818 Ash



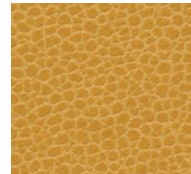
363-3464 Tusk



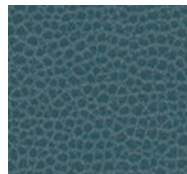
363-3463 Cocoa



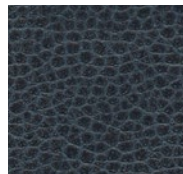
363-3141 Fields



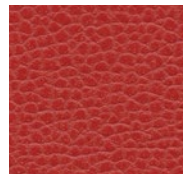
363-5258 Sun Shower



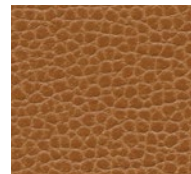
363-2604 Stone Blue



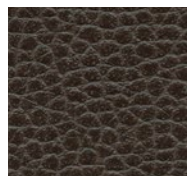
363-2680 Atlantic



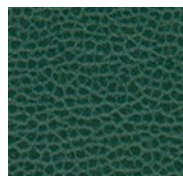
363-1387 Dogwood



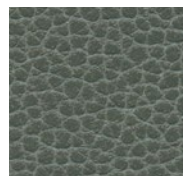
363-3145 Bronze



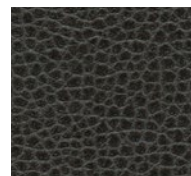
363-3037 Horsehair



363-7273 Aspen Green



363-5817 Shale



363-5845 Ebony

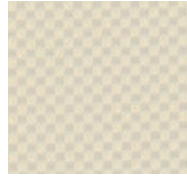
*Removal of denim dye may vary depending on the period of time the stain sets in. While Pro offers excellent protection, full removal is not guaranteed.

Ultraleather® | Viva

Antimicrobial protection



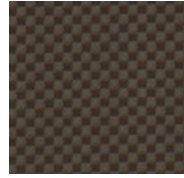
558-9369 Crocus



558-3119 Bisque



558-3526 Driftwood



558-3215 Nubian



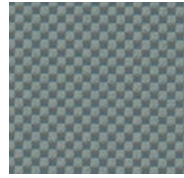
558-1322 Poinsettia



558-2652 Azure



558-2643 Imperial



558-5623 Aluminum



558-5600 Lava

Ultraleather® | Linen

Antimicrobial protection



550-3089 Nude



550-3088 Opaline



550-3071 Fawn



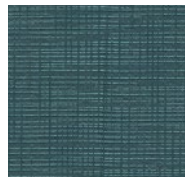
550-3091 Honey



550-4444 Citrine



550-3522 Cola



550-7270 Peacock



550-5744 Platinum



550-5783 Steel

SPECIFICATIONS

	Ultraleather® Pro Antimicrobial protection Ink and denim* resistant	Ultraleather® Promessa® Antimicrobial protection	Ultraleather® Viva Antimicrobial protection	Ultraleather® Linen Antimicrobial protection
COMPOSITION:	100% POLYURETHANE SURFACE 100% REINFORCED RAYON BACKING	100% POLYURETHANE SURFACE 65% POLYESTER, 35% RAYON BACKING	100% POLYURETHANE SURFACE 65% POLYESTER, 35% RAYON BACKING	100% POLYURETHANE SURFACE 65% POLYESTER, 35% RAYON BACKING
WEIGHT:	APPROX. 9.7 OZ. PER SQUARE YARD APPROX. 330 GRAMS PER SQUARE METRE	APPROX. 12 OZ. PER SQUARE YARD APPROX. 410 GRAMS PER SQUARE METRE	APPROX. 8.8 OZ. PER SQUARE YARD APPROX. 300 GRAMS PER SQUARE METRE	APPROX. 10 OZ. PER SQUARE YARD APPROX. 340 GRAMS PER SQUARE METRE
THICKNESS:	APPROX. 0.95 MM	APPROX. 1.1 MM	APPROX. 1.0 MM	APPROX. 1.1 MM
WIDTH:	54 INCHES / 137 CM	54 INCHES / 137 CM	54 INCHES / 137 CM	54 INCHES / 137 CM
CHARACTERISTICS				
ABRASION: (MEETS OR EXCEEDS)	ASTM D4157 / 500,000 DOUBLE RUBS* BS 2543 / 200,000 RUBS** *WYZENBEEK **MARTINDALE	ASTM D4157 / 400,000 DOUBLE RUBS* BS 2543 / 180,000 RUBS** *WYZENBEEK **MARTINDALE	ASTM D4157 / 100,000 DOUBLE RUBS* BS 2543 / 200,000 RUBS** *WYZENBEEK **MARTINDALE	ASTM D4157 / 300,000 DOUBLE RUBS* BS 2543 / 160,000 RUBS** *WYZENBEEK **MARTINDALE
ANTIMICROBIAL:	ASTM E2180	ASTM E2180	ASTM E2180	ASTM E2180
HYDROLYSIS:	14+ WEEKS ASTM D3690-02 SECT. 6.11 (HYDROLYTIC STABILITY) ISO 1419 METHOD C (ACCELERATED AGEING)	14+ WEEKS ASTM D3690-02 SECT. 6.11 (HYDROLYTIC STABILITY) ISO 1419 METHOD C (ACCELERATED AGEING)	14+ WEEKS ASTM D3690-02 SECT. 6.11 (HYDROLYTIC STABILITY) ISO 1419 METHOD C (ACCELERATED AGEING)	14+ WEEKS ASTM D3690-02 SECT. 6.11 (HYDROLYTIC STABILITY) ISO 1419 METHOD C (ACCELERATED AGEING)
ADHESION OF COATING:	ASTM D751	ASTM D751	ASTM D751	ASTM D751
TEAR STRENGTH:	ASTM D2261	ASTM D2261	ASTM D2261	ASTM D2261
BREAKING STRENGTH:	ASTM D5034	ASTM D5034	ASTM D5034	ASTM D5034
COLORFASTNESS				
CROCKING:	AATCC 8, CLASS 5 WET & DRY	AATCC 8, CLASS 5 WET & DRY	AATCC 8, CLASS 5 WET & DRY	AATCC 8, CLASS 5 WET & DRY
LIGHT:	AATCC 16.3, 200 HOURS, GRADE 4-5 ISO 105 - B02 : 1999 GRADE 7/8	AATCC 16.3, 200 HOURS, GRADE 4-5 ISO 105 - B02 : 1999 GRADE 7/8	AATCC 16.3, 200 HOURS, GRADE 4-5 ISO 105 - B02 : 1999 GRADE 7/8	AATCC 16.3, 200 HOURS, GRADE 4-5 ISO 105 - B02 : 1999 GRADE 7/8
F/R RATING (HFR FREE)				
F/R RATING:	ASTM E84 (ADHERED) CLASS A BS 5852 PART 0 & 1 CA TB 117-2013 PASS FMVSS 302 & 95/28 ANNEX IV PASS NFPA 260 CLASS 1 UFAC CLASS 1	ASTM E84 (ADHERED) CLASS A BS 5852 PART 0 & 1 CA TB 117-2013 PASS FMVSS 302 & 95/28 ANNEX IV PASS NFPA 260 CLASS 1 UFAC CLASS 1	ASTM E84 (ADHERED) CLASS A BS 5852 PART 0 & 1 CA TB 117-2013 PASS FMVSS 302 & 95/28 ANNEX IV PASS NFPA 260 CLASS 1 UFAC CLASS 1	ASTM E84 (ADHERED) CLASS A BS 5852 PART 0 & 1 CA TB 117-2013 PASS FMVSS 302 & 95/28 ANNEX IV PASS NFPA 260 CLASS 1 UFAC CLASS 1

* CAN BE TREATED TO MEET FAR SPECIFICATIONS.

* THESE FABRICS, WHEN TREATED AND/OR USED WITH OTHER COMPATIBLE FURNITURE COMPONENTS, HAVE BEEN SHOWN TO PERFORM WELL UNDER THE FIRE TEST CONDITIONS OF CALIFORNIA TECHNICAL BULLETIN 133, ASTM E 84 (UNADHERED), BS 5852 SOURCE 5 ("CRIB 5"), BS 7175, BS 5867 PART 2 TYPE B, IMO A.652(16), EN 1021 PARTS 1 & 2, AND NFPA 701.

* REMOVAL OF DENIM DYE MAY VARY DEPENDING ON THE PERIOD OF TIME THE STAIN SETS IN. WHILE PRO OFFERS EXCELLENT PROTECTION, FULL REMOVAL IS NOT GUARANTEED.

Cleaning & Care Instructions

- Clean with soap and water, or alcohol-based cleaners like Fantastik® and Formula 409®
- Disinfect using a 1:5 bleach/water solution
- Ultraleather® | Pro - for ink and tough stains, clean using isopropyl/rubbing alcohol
- Rinse all cleaning solutions with clean water

Earth Friendly

- **GREENGUARD Certified**
 - Meets stringent VOC emission standards
 - Promotes healthier indoor air quality
 - Contributes towards satisfying credits under LEED® and level®, BIFMA
- Compliant with Prop 65
- Less than 100 ppm of antimicrobial treatment
- No Conflict Minerals
- No Flame Retardants (ex. Halogenated, Brominated)
- No PBDEs (Polybrominated Diphenyl Ethers)
- No Plasticizers, Heavy Metals, Stabilizers, Phthalates or Bisphenol A (BPA)
- No POPs (Persistent Organic Pollutants)
- No PVC (Polyvinyl Chloride)
- No toxic by-products
- Over 99% of solvents recaptured and recycled



1820 W. Hubbard Street
Suite 300
Chicago, IL 60622

T 866.892.6130
www.sediasystems.com
info@sediasystems.com

12/16

www.ultrafabricsllc.com

Ultrafabrics® and logo, Ultraleather®, Brisa®, Ultratech™ and Promessa® are trademarks of Ultrafabrics, LLC. Made in Japan.

