

SERIES 01

MATERIALITY
MATTERS.

SPRING 2017



FEEL THE LOVE.

It's in our nature to reach out and touch things. We can't just look— we need to feel with our fingertips. Textures tell us stories when they brush against our skin. They can catch us by surprise, transport us to new places and bring back memories we thought we'd lost.

Steelcase is unveiling seven new palettes that are all about feel. Whether it's the texture in your hands or the emotions they evoke, they're designed to leave you feeling alive.







09



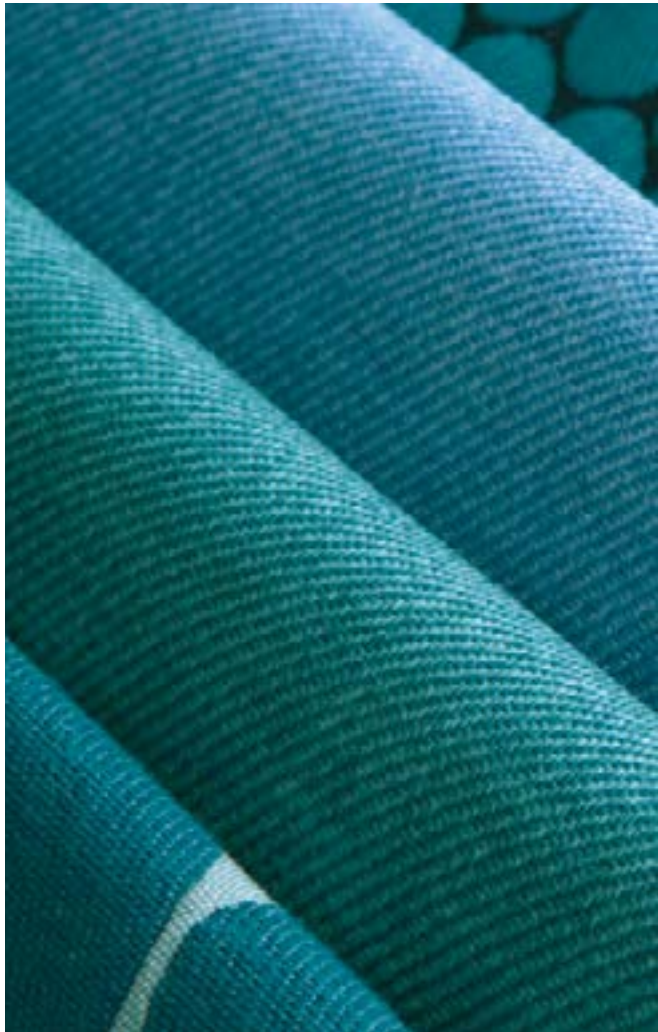


THE ART OF PERFORMANCE.

The best things are built to last, and keep performing no matter what life throws at them. Longevity helps us form lasting bonds that make our relationships more meaningful over time.

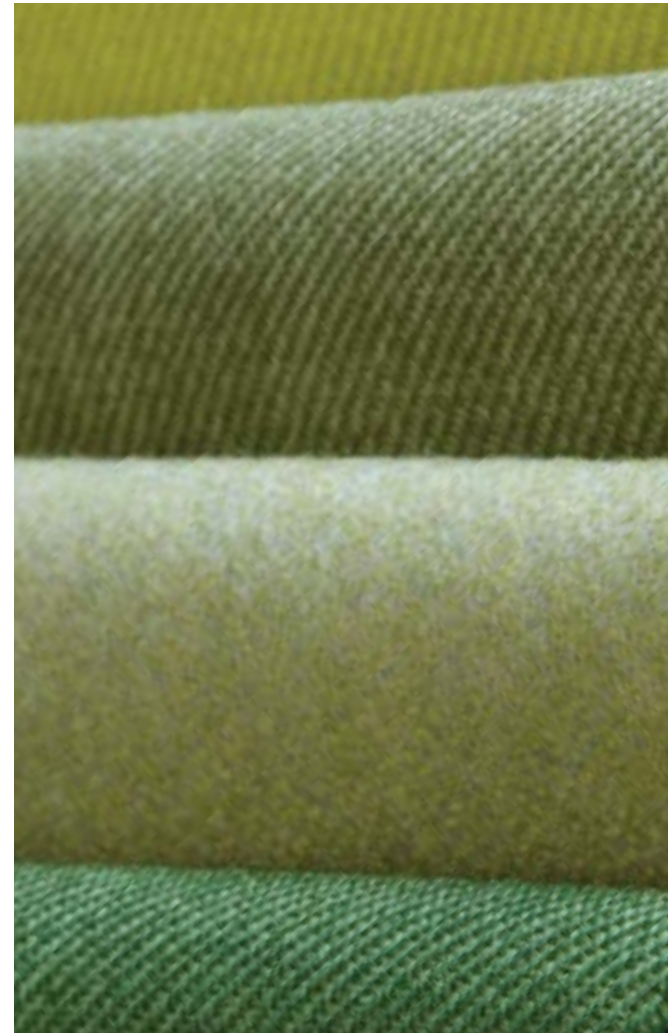
With just the right balance of both science and craftsmanship, evergreen beauty and ongoing usability, we keep things fresh and future proof.







19





EARTH FRIENDLY.

Good business is sustainable, and good design leaves nothing to waste. By breathing new life into materials that would normally get left behind, we can make a real difference in the world around us. And help leave it a better place than we found it.

So we're giving materials a second life. After all, the cycle of rebirth is nature's truest course.









APPENDIX

PAGE 2 (top to bottom):

Designtex Gamut 3468-812
Designtex Mod 3713-803

PAGE 4-5 (left to right):

Steelcase Medley 65012
Designtex Adler 3661-601
Designtex Gamut 3468-601
Steelcase Cogent Connect 5S19
Designtex Loop to Loop 3467-602

PAGE 6-7 (left to right):

Designtex Mod 3713-801, 3713-803
Designtex Gamut 3468-812
Designtex Heather 3473-801

PAGE 8-9 (top to bottom):

Steelcase Cogent Connect 5S19
Designtex Loop to loop 3467-602
Designtex Adler 3661-601

PAGE 10-11 (top to bottom):

Designtex Gamut 3468-812
Designtex Mod 3713-803
Designtex Gamut 3468-810,
3468-807, 3468-805
Designtex Heather 3473-801

PAGE 12 (top to bottom):

Designtex Heather 3473-401
Designtex Mod 3713-402

PAGE 14-15 (top to bottom):

Steelcase Medley 68005
Designtex Adler 3661-501

PAGE 16-17 (top to bottom):

Designtex Loop to Loop 3467-402
Designtex Gamut 3468-402, 3468-406
Designtex Mod 3713-402
Designtex Heather 3473-401
Designtex Mod 3713-402

PAGE 18-19:

Designtex Boucle Two-Tone 3751-102

PAGE 20-21 (top to bottom):

Designtex Gamut 3468-402, 3468-406
Designtex Loop to Loop 3467-402
Designtex Gamut 3468-502, 3468-507
Designtex Heather 3473-503
Designtex Gamut 3468-508

PAGE 22:

Designtex Loop to Loop 3467-801

PAGE 24-25:

Designtex Adler 3661-301

PAGE 27:

Designtex Mod 3713-802

PAGE 28-29 (top to bottom):

Steelcase Cogent Connect 5S18
Designtex Adler 3661-301

PAGE 30-31(top to bottom):

Designtex Heather 3473-701, 3473-802
Designtex Mod 3713-901
Designtex Gamut 3468-106
Designtex Heather 3473-501,
3473-104, 3473-802



Steelcase[®]

WWW.STEELCASE.ASIA

HONG KONG +852 2520 0160 **SHANGHAI** +86 21 6137 6288 **BEIJING** +86 10 5911 3988 **SINGAPORE** +65 6738 5225
TOKYO +81 3 3448 9611 **SYDNEY** +61 2 9660 5511 **MUMBAI** +91 22 6121 3500 **BANGALORE** +91 80 3055 0300
DELHI +91 124 6103 000 **HYDERABAD** +91 40 67046400