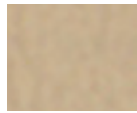


WHISPER™  
SILVERTEX®  
DOLCE™  
HITCH™

# WHISPER™



WHI-2150 FAWN



WHI-2141 CASHEW



WHI-2117 BONE



WHI-2156 PUTTY



WHI-2157 FOG



WHI-2134 PATINA



WHI-2119 GRAVEL



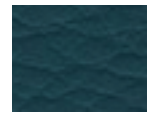
WHI-2158 CUCUMBER



WHI-2159 ZEST



WHI-2160 SASSAFRAS



WHI-2161 MALLARD



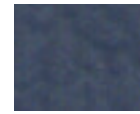
WHI-2120 ANTELOPE



WHI-2162 PARADISE



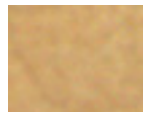
WHI-2163 INDIGO



WHI-2136 CERULEAN



WHI-2137 NAVY



WHI-2118 CAMEL



WHI-2142 COGNAC



WHI-2123 LUGGAGE



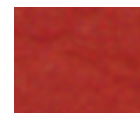
WHI-2125 CINNAMON



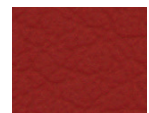
WHI-2164 CAROTENE



WHI-2165 MOLTEN



WHI-2124 SALSA



WHI-2126 BORDEAUX



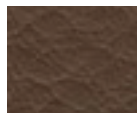
WHI-2121 CAPPUCCINO



WHI-2151 OCHRE



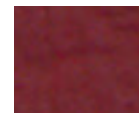
WHI-2152 MAHOGANY



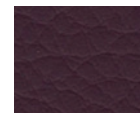
WHI-2153 TRUFFLE



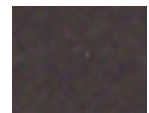
WHI-2166 BRICK RED



WHI-2127 MERLOT



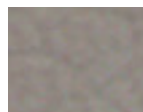
WHI-2144 SANGRE



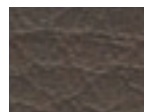
WHI-2143 ESPRESSO



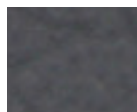
WHI-2154 PEWTER



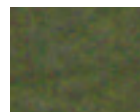
WHI-2138 ELEPHANT



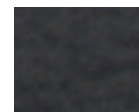
WHI-2155 STORM



WHI-2139 CHARCOAL

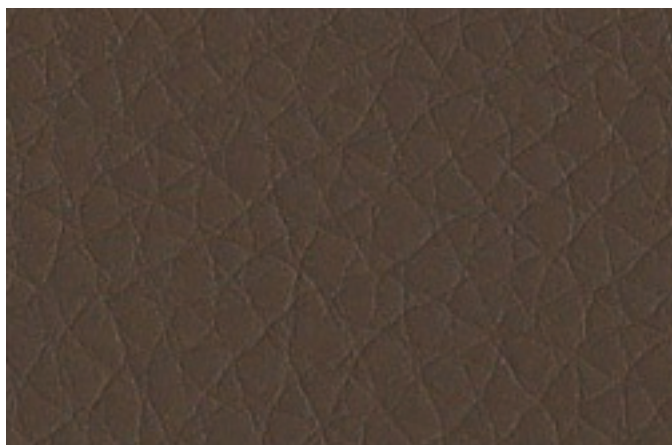


WHI-2129 FOREST

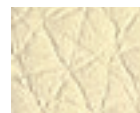


WHI-2140 BLACK

# DOLCE™



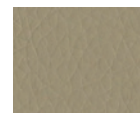
DOL-6712 MOCHA



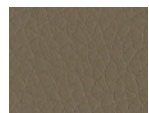
DOL-6702 IVORY



DOL-6703 ECRU



DOL-6715 FOG



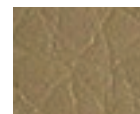
DOL-6716 BRAMBLE



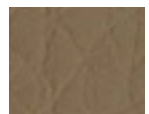
DOL-6705 SAND



DOL-6706 LATTE



DOL-6707 CUMIN



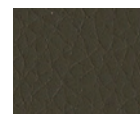
DOL-6708 MUSHROOM



DOL-6721 CITRON



DOL-6722 GRASS



DOL-6717 MOSS



DOL-6713 CHOCOLATE



DOL-6704 DUNE



DOL-6709 CAMEL



DOL-6710 LION



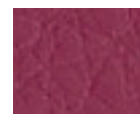
DOL-6711 RUSSET



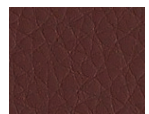
DOL-6718 TANGELO



DOL-6719 POPPY



DOL-6720 FUCHSIA



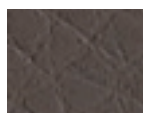
DOL-6714 BURGUNDY



DOL-6701 WHITE



DOL-6726 ARTESIAN



DOL-6727 METEOR



DOL-6728 BLACK



DOL-6725 INDIGO

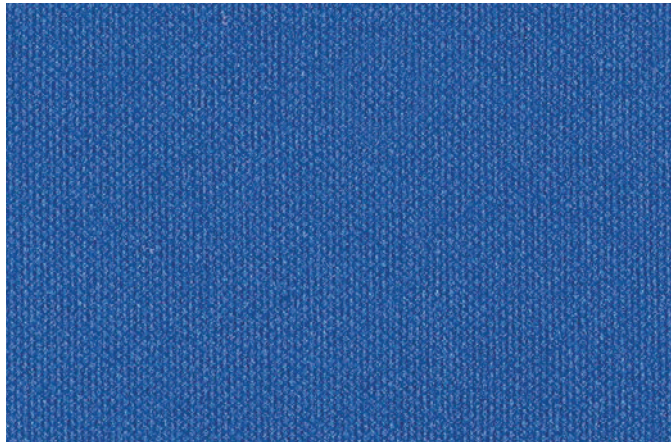


DOL-6724 JET



DOL-6723 PEACOCK

# SILVERTEX®



STX-8801 MARINE BLUE



STX-8833  
CRÈME DE MENTHE



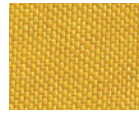
STX-8834  
ACID



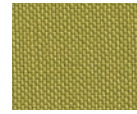
STX-8820  
BASIL



STX-8821  
BOTTLE



STX-8842  
LIMONCELLO



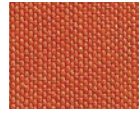
STX-8841  
ZEST



STX-8819  
CELERY



STX-8818  
SAGE



STX-8837  
BAZAAR



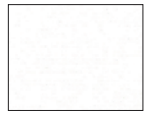
STX-8808  
CHAMPAGNE



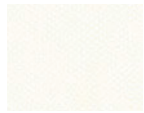
STX-8831  
MARSH



STX-8835  
PEAT



STX-8806  
ICE



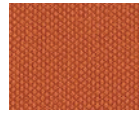
STX-8807  
CREAM



STX-8802  
LAGOON



STX-8803  
TURQUOISE



STX-8811  
MANDARIN



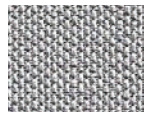
STX-8810  
CHESTNUT



STX-8832  
BRONZE



STX-8809  
TAUPE



STX-8839  
PLATA



STX-8822  
STORM



STX-8804  
SAPPHIRE



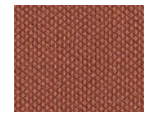
STX-8805  
JET



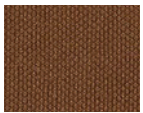
STX-8838  
IMPERIAL



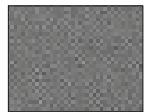
STX-8812  
POPPY



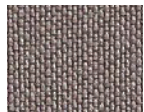
STX-8814  
UMBER



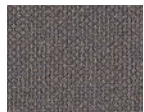
STX-8813  
LUGGAGE



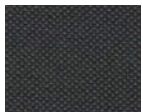
STX-8840  
STERLING



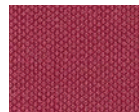
STX-8830  
NEUTRA



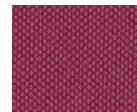
STX-8824  
METEOR



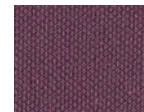
STX-8823  
CARBON



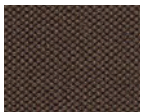
STX-8815  
BORSCHT



STX-8816  
RASPBERRY

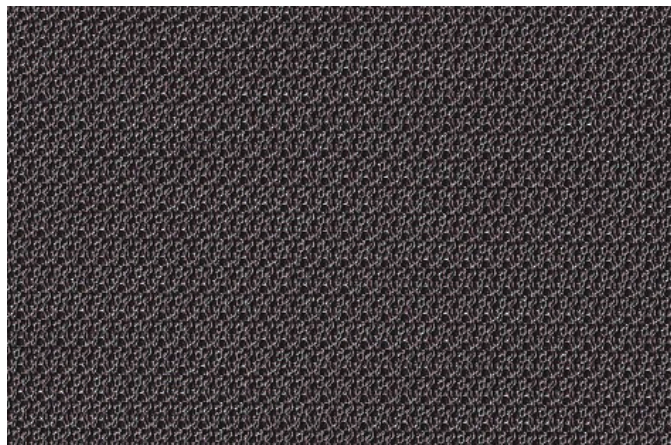


STX-8817  
BLACKBERRY

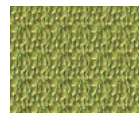


STX-8825  
MOCHA

# HITCH™



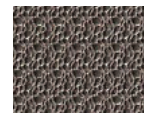
HIT-8901 METEORITE



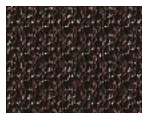
HIT-8913  
ZEST



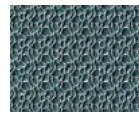
HIT-8917  
FIESTA



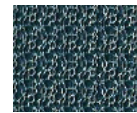
HIT-8916  
NEUTRA



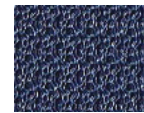
HIT-8920  
JAVA



HIT-8906  
WATER



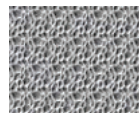
HIT-8910  
CARIBBEAN



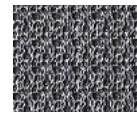
HIT-8914  
SAPPHIRE



HIT-8918  
INDIGO



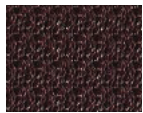
HIT-8902  
FOG



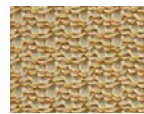
HIT-8903  
PLATINUM



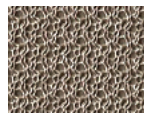
HIT-8904  
CARBON



HIT-8919  
CORDOVAN



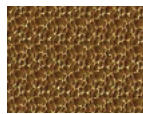
HIT-8909  
SUNFLOWER



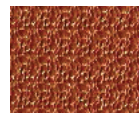
HIT-8912  
PUTTY



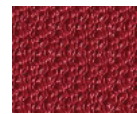
HIT-8908  
BRONZE



HIT-8905  
SAFFRON



HIT-8911  
BRILLIANT  
ORANGE



HIT-8915  
LAVA



HIT-8907  
CARAMEL

**Content | Backing | Specifics**

	Dolce	Hitch	Silvertex	Whisper
Vinyl   Urethane Topcoat		•	•	•
100% Polyurethane	•			
100% Rayon Backing	•			
Hi-Loft <sup>2</sup> ™ Backing			•	•
Ultra Hi-Loft™ Backing		•		
Weight (oz.)	15	27	30	27
Width (in.)	54	54	54	54
Roll Size (yd.)	30	30	30	30

**Flame Retardancy\***

	DOL	HIT	STX	WHI
Boston Fire Code - BFD IX-1			•	
Federal Aviation Spec FAR 25.853(a) <small>Appendix F, Part 1 (a)(1)(ii)</small>			•	
Federal St. 191A M 5903.1			•	
Port Authorities of NY and NJ			•	
UFAC - Class I	•	•	•	•
IMO FTP 2010 Code MSC. 307(88) <small>Part 8, 3.1 &amp; 3.2</small>	•	•	•	•
NFPA 260 - Class I	•	•	•	•
FMVSS 302	•	•	•	•
California T.B. 117- 2013	•	•	•	•

**Finishes | Characteristics**



	DOL	HIT	STX	WHI
Napa Finish		•	•	
Antibacterial		•	•	•
Antifungal   Mildew Resistant		•	•	•
Stain Resistant		•	•	
No Heavy Metals	•	•	•	•
Formaldehyde Free	•	•	•	•
Polycarbonate Resin System	•			

**Performance**

	DOL	HIT	STX	WHI
Abrasion - CFFA 1-a, ASTM D-4157: <small>Wyzenbeek #10 Cotton Duck</small>	100K	75K	100K	100K
Cold Crack	-10°F	-10°F	-10°F	-10°F
UV Stabilized Pigments: <small>Xenotest: AATCC Blue Wool: 1,000 hrs</small>		•	•	•
UV Stabilized Pigments: <small>QUV: ASTM Grey Scale: 650 hrs</small>		•		
Exclusively Interiors	•			•
Exterior Approved		•		

**Care and Cleaning Guides**

**Dolce and Whisper:**

**Step 1:** For light soiling, a solution of 10% household liquid dishsoap in warm water, applied with a soft damp cloth. Rinse with clean water and dry.

**Step 2:** For heavy soiling, dampen a soft white cloth with a one to one (1:1) solution of Fantastik® and water or Formula 409® and water. Rub gently and rinse with a water dampened cloth.

**Step 3:** For more difficult stains, dampen a soft white cloth with a solution of household bleach (10% bleach / 90% water). Rub gently and rinse with a water dampened cloth to remove bleach concentration.

Do not use with alcohol-based cleaning agents!

**Hitch and Silvertex:**

**Step 1 (eye shadow, mascara, grease, black felt tip pen, crayon, chocolate, suntan lotion, hair and body oils\*):**  
Remove excess spill with a damp cloth. Clean with a 1:1 mix of Ivory® liquid soap and water. Next, rinse with clean water and dry.

**Step 2 (red lipstick):**  
Use a straight application of concentrated cleaners such as Formula 409® or Fantastik® spray cleaner. Wipe with a clean cloth, rinse with water, and dry.

**Step 3 (blood, urine, feces, oil base paint, tar, and asphalt):**  
Use a 1:1 mix of ammonia and water, or a 1:4 mix of bleach and water. Rinse with clean water and dry.

**Steps 4 (all other tough stains):**  
Use a 1:1 mix of isopropyl alcohol and water. If the stain persists, use straight alcohol. Rinse thoroughly with clean water and pat dry.

**Note:** For cleaning that requires step 4, use a soft cotton cloth saturated with the cleaning material and rub the stain in circles 10 times. Pat dry with another soft cotton cloth and check the results.

©2016 Spradling International, Inc.®

The information published in this care guide refers to the performance of PERMABLOK<sup>3</sup>® products in specific tests conducted under laboratory conditions.

Results may vary under actual conditions.

This information is not a guarantee and does not relieve the user from the responsibility of the proper and safe use of the product and all cleaning agents. The use of certain agents can be harmful to the surface appearance and lifespan of vinyl. Spradling, its agents, and assigns assume no responsibility resulting from the use of such cleaning agents to the vinyl. Please check compatibility when using this product in combination with painted or varnished surfaces.

Spradling International is not sponsored by, affiliated with, or endorsed by such trademark owners. Additionally, any use by Spradling International of any third-party trademark does not constitute any endorsement by Spradling International of such third party.

Hi-Loft<sup>2</sup>™ is a trademark of Spradling Holdings, Inc.®  
Ultra Hi-Loft™ is a trademark of Spradling Holdings, Inc.®  
SILVERGUARD® is a registered trademark of Spradling Holdings, Inc.®  
PERMABLOK<sup>3</sup>® is a registered trademark of Spradling Holdings, Inc.®  
SILVERTEX® is a registered trademark of Spradling Holdings, Inc.®  
DOLCE™ is a trademark of Spradling Holdings, Inc.®  
HITCH™ is a trademark of Spradling Holdings, Inc.®  
WHISPER™ is a trademark of Spradling Holdings, Inc.®



This fabric meets or exceeds these ACT performance guidelines.  
\*Certification Marks owned by ACT®



1820 W. Hubbard Street  
Suite 300  
Chicago, IL 60622  
866.892.6130  
www.sediastystems.com  
info@sediastystems.com