

Legend

Legenda. Légende. Legende. Leyenda

Wood. Legno. Bois. Holz. Madera

FS	Bleached beech	Faggio sbiancato	Hêtre blanchi	Buche gebleicht	Haya aclarada
FR	Bleached ash	Frassino sbiancato	Frêne blanchi	Esche gebleicht	Fresno aclarado
RS	Bleached oak	Rovere sbiancato	Chêne blanchi	Eiche gebleicht	Roble aclarado
W	Oak/beech stained wenge	Rovere/faggio tinto wengé	Chêne /Hêtre teinté wengé	Eiche/Buche Wengé	Roble/Haya teñido wengué
N1	Oak/ash/beech stained clear walnut	Rovere/frassino/faggio tinto noce chiaro	Chêne/Frêne /Hêtre teinté noyer	Eiche/Esche/Buche Nuss gebeizt	Roble/Fresno/Haya teñido nogal
TC	Oak/ash stained on sample	Rovere/frassino tinto campione	Chêne/Frêne teinté échantillon	Eiche/Esche nach Muster gebeizt	Roble/Fresno teñido según muestra
EB	Ebony	Ebano	Ebène	Ebenholz	Ébano
ZB	Zebrano	Zebrano	Zebrano	Zebrano	zebrano
MP	Maple	Acero	Herable	Ahorn	Arce
N	Walnut	Noce	Noyer	Nuss	Nogal
AN	Black lacquered oak/ash visible grains, beech stained black	Rovere/frassino laccato nero a poro aperto, faggio tinto nero	Chêne/Frêne laqué noir à pore ouvert, hêtre teinté noir	Eiche/Esche schwarz offenporig lackiert, Buche schwarz lackiert	Roble/fresno lacado en negro a poro abierto, haya teñida de negro
BI	White lacquered oak/ash with visible grains	Rovere/frassino laccato bianco a poro aperto	Chêne/Frêne laqué blanc à pore ouvert	Eiche/Esche weiß offenporig lackiert	Roble/fresno lacado en blanco a poro abierto
RA	Pink lacquered oak/ash with visible grains	Rovere/frassino laccato rosa a poro aperto	Chêne/Frêne laqué rose à pore ouvert	Eiche/Esche rosa offenporig lackiert	Roble/fresno lacado en rosa a poro abierto
GC	Light grey lacquered oak/ash with visible grains	Rovere/frassino laccato grigio chiaro a poro aperto	Chêne/Frêne laqué gris clair à pore ouvert	Eiche/Esche hellgrau offenporig lackiert	Roble/fresno lacado en gris claro a poro abierto
AR	Orange stained ash	Frassino tinto arancio	Frêne teinté orange	Esche orange lackiert	Fresno teñido de naranja
BL2	Dark Blue lacquered oak/ash with visible grains	Rovere/frassino laccato blu scuro a poro aperto	Chêne/Frêne laqué bleu foncé à pore ouvert	Eiche/Esche dunkelblau offenporig lackiert	Roble/fresno lacado en azul oscuro a poro abierto
AZ1	Light blue lacquered oak/ash with visible grains	Rovere/frassino laccato azzurro a poro aperto	Chêne/Frêne laqué bleu clair à pore ouvert	Eiche/Esche hellblau offenporig lackiert	Roble/fresno lacado en azul a poro abierto
VE1	Light green lacquered oak/ash with visible grains	Rovere/frassino laccata verde chiaro a poro aperto	Chêne/Frêne laqué vert clair à pore ouvert	Eiche/Esche hellgrün offenporig lackiert	Roble/fresno lacado en verde claro a poro abierto
VE2	Dark green lacquered oak/ash with visible grains	Rovere/frassino laccato verde scuro a poro aperto	Chêne/Frêne laqué vert foncé à pore ouvert	Eiche/Esche dunkelgrün offenporig lackiert	Roble/fresno lacado en verde oscuro a poro abierto
RB	Ruby red lacquered oak/ash with visible grains	Rovere/frassino laccato rosso rubino a poro aperto	Chêne/Frêne laqué rouge rubis à pore ouvert	Eiche/Esche rubinrot offenporig lackiert	Roble/fresno lacado en rojo rubí a poro abierto
MO	Mahogany lacquered oak/ash with visible grains	Rovere/frassino laccato mogano a poro aperto	Chêne/Frêne laqué acajou à pore ouvert	Eiche/Esche mahagoni offenporig lackiert	Roble/fresno lacado en caoba a poro abierto
MC	Cognac lacquered oak/ash with visible grains	Rovere/frassino laccato cognac a poro aperto	Chêne/Frêne laqué cognac à pore ouvert	Eiche/Esche cognac offenporig lackiert	Roble/fresno lacado en coñac a poro abierto
V101	Gris vintage	Finitura grigio anticato	Finition gris vieilli	Farbe Vintage Grau	Acabado gris efecto vintage
V102	Wenge vintage	Finitura wengé anticato	Finition wengé vieilli	Farbe Vintage Wenge	Acabado wengué efecto vintage
V103	Walnut vintage	Finitura noce anticato	Finition noyer vieilli	Farbe Vintage Nussbaum	Acabado nogal efecto vintage

Plastic material. Materiale plastico. Matériau plastique. Kunststoff. Materiales plásticos

NY	Nylon	Nylon	Nylon	Nylon	Nylon
PET	Polyethylene	Polietilene	Poléthylène	Polyethylen	Polietileno
PPL	Polypropylene	Polipropilene	Polypropylène	Polypropylen	Polipropileno
PC	Polycarbonate	Policarbonato	Polycarbonate	Polykarbonat	Policarbonato
SCR	Chromed ABS	ABS cromato	ABS Chromé	ABS Verchromt	ABS cromado
TP	Technopolymer	Tecnopolimero	Technopolymère	Technopolymer	Tecnopolímero
ME	Methacrylate	Metacrilato	Méthacrylate	Methacrylat	Metacrilato

Fabric. Tessuto.Tissu. Stoff. Tela

A	Padded with Cat. A	Imbottitura con Cat. A	Assise garnie Cat. A	Gepolstert mit Kat. A	Tapizado en Cat. A
B	Padded with Cat. B	Imbottitura con Cat. B	Assise garnie Cat. B	Gepolstert mit Kat. B	Tapizado en Cat. B
C	Padded with Cat. C	Imbottitura con Cat. C	Assise garnie Cat. C	Gepolstert mit Kat. C	Tapizado en Cat. C
D	Padded with Cat. D	Imbottitura con Cat. D	Assise garnie Cat. D	Gepolstert mit Kat. D	Tapizado en Cat. D
E	Padded with Cat. E	Imbottitura con Cat. E	Assise garnie Cat. E	Gepolstert mit Kat. E	Tapizado en Cat. E
F	Padded with genuine or regenerated leather	Rivestimento in cuoio naturale o rigenerato	Rèvetement en cuir naturel ou régénéré	Bezug aus natürlichem oder regeneriertem Leder	Fornado en cuero natural o regenerado
G	Padded with Cat. G	Imbottitura con Cat. G	Assise garnie Cat. G	Gepolstert mit Kat. G	Tapizado en Cat. G
H	Padded with Cat. H	Imbottitura con Cat. H	Assise garnie Cat. H	Gepolstert mit Kat. H	Tapizado en Cat. H
N	Padded with Cat. N	Imbottitura con Cat. N	Assise garnie Cat. N	Gepolstert mit Kat. N	Tapizado en Cat. N
P	Padded with Cat. P	Imbottitura con Cat. P	Assise garnie Cat. P	Gepolstert mit Kat. P	Tapizado en Cat. P
PG	Wooden panel and foam	Pannello e gomma piuma			Panel y gomaespuma
TXT	Textilene	Textilene			textileno

Steel and stainless steel. Acciaio e acciaio inox. Acier et inox. Stahl und Edelstahl. Acero y inox

AC	Brushed steel	Acciaio inox satinato	Inox brossé	Edelstahl matt	Acero inoxidable satinado
LU	Polished steel	Acciaio inox lucidato	Inox poli	Edelstahl poliert	Acero inoxidable pulido
CR	Chromed	Acciaio cromato	Chromée	Verchromter Rohr	Cromado
ST	Satinized	Acciaio satinato	Satinée	Satinierter Rohr	Satinado
EC	Corten	Effetto Corten	Effet corten	Corten-Effekt	efecto Cortén
OA	Antique brass	Ottone anticato	Laiton vieilli	Antikes Messing	Latón envejecido
RM	Antique copper	Rame anticato	Cuivre vieilli	Antikes Kupfer	Cobre envejecido
BS	Antique bronze	Bronzo anticato	Bronze vieilli	Antike Bronze	Bronce envejecido
TN	Titanium	Effetto titanio	Titanium	Titan	Titanio

Alluminium. Alluminio. Aluminium. Aluminium, Aluminio

AS	Brushed aluminium	Alluminio spazzolato	Aluminium brossé	Aluminium satiniert	Aluminio satinado
AA	Anodized aluminium	Alluminio anodizzato	Aluminium anodisé	Aluminium anodisiert	Aluminio anodizado

Finishes / Finiture

Steel and stainless steel / Acciaio e acciaio inox



CR

Chromed steel
Acciaio cromato



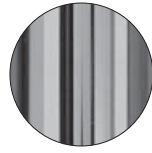
ST

Satinized steel
Acciaio satinato



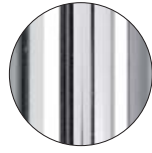
CO

Matt chromed steel
Acciaio cromato opaco



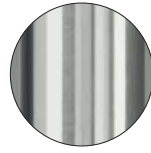
CN

Black chromed steel
Acciaio cromato nero



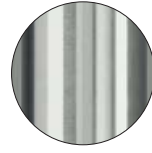
LU

Polished s/steel
Acciaio inox lucidato



AC

Brushed s/steel
Acciaio inox satinato



AC 316

Brushed s/steel AISI 316
for outdoor
Acciaio inox AISI 316 per
esterno



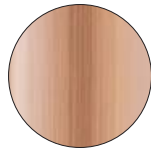
BS

Antique bronzer steel
Acciaio bronzo anticato



OA

Antique brass steel
Acciaio ottone anticato



RM

Antique copper steel
Acciaio rame anticato



TN

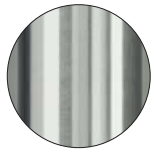
Titanium steel
Acciaio finitura titanio

Aluminium / Alluminio



LU

Polished aluminium
Alluminio lucidato



AS

Satinized aluminium
Alluminio satinato



AA

Anodized aluminium
Alluminio anodizzato



TN

Titanium
Titanio

Nichel / Nichel



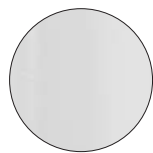
AS

Satinized nichel
Nichel satinato

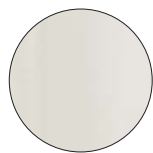
Colours are indicative. Pedrali reserves the right to modify or upgrade the product without prior notice.
I colori sono indicativi. Pedrali si riserva la facoltà di apportare modifiche o migliorie senza alcun preavviso.

Indoor finishes / Finiture per interno

Powder coated cast-iron, steel and aluminium / Ghisa, acciaio e alluminio verniciato



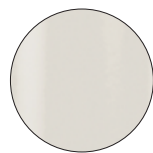
BI100
White,
textured-matt finish
Bianco,
finitura goffrata-opaca



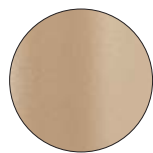
BI200
White,
textured-matt finish
Bianco,
finitura goffrata-opaca



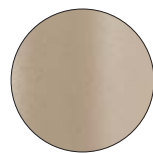
BI300
White,
smooth-matt finish
Bianco,
finitura liscia-opaca



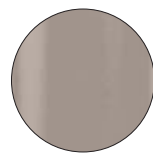
BI400
White,
smooth-glossy finish
Bianco,
finitura liscia-lucida



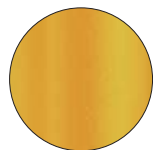
SA100
Sand,
textured-matt finish
Sabbia,
finitura goffrata-opaca



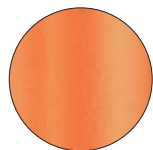
SA200
Sand,
textured-matt finish
Sabbia,
finitura goffrata-opaca



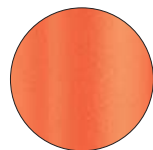
SA300
Sand,
hammered-glossy finish
Sabbia,
finitura bucciata-lucida



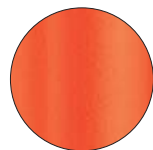
GI100
Yellow,
textured-matt finish
Giallo,
finitura goffrata-opaca



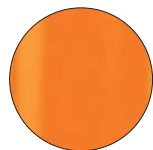
AR200
Orange,
textured-matt finish
Arancio,
finitura goffrata-opaca



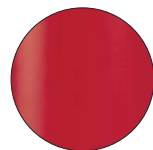
AR500
Orange,
textured-matt finish
Arancio,
finitura goffrata-opaca



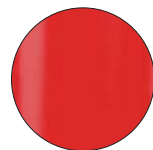
AR400
Orange,
textured-matt finish
Arancio,
finitura goffrata-opaca



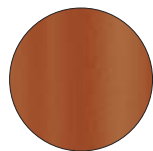
AR300
Orange,
smooth-glossy finish
Arancio,
finitura liscia-lucida



RO200
Red,
textured-matt finish
Rosso,
finitura goffrata-opaca



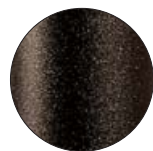
RO100
Red,
smooth-glossy finish
Rosso,
finitura liscia-lucida



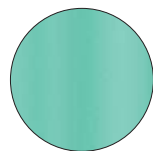
TE
Terracotta,
textured-matt finish
Terracotta,
finitura goffrata-opaca



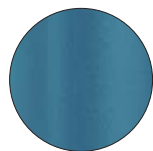
RU
Rust,
textured-matt finish
Ruggine,
finitura goffrata-opaca



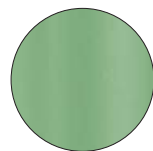
MG
Brown,
textured-matt finish
Marrone,
finitura goffrata-opaca



AZ100
Light blue,
textured-matt finish
Azzurro,
finitura goffrata-opaca



BL300
Blue,
textured-matt finish
Blu,
finitura goffrata-opaca



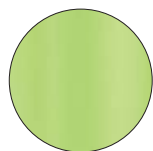
VE100
Sage green,
textured-matt finish
Verde salvia,
finitura goffrata-opaca



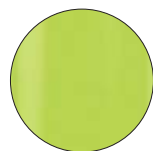
VE300
Forest green,
textured-matt finish
Verde bosco,
finitura goffrata-opaca



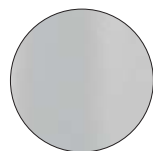
6005
Green,
smooth-glossy finish
Verde,
finitura liscia-lucida



VE400
Green,
textured-matt finish
Verde,
finitura goffrata-opaca



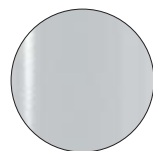
VE200
Green,
smooth-glossy finish
Verde,
finitura liscia-lucida



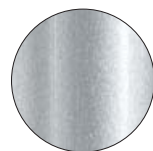
BE100
Beige,
textured-matt finish
Beige,
finitura goffrata-opaca



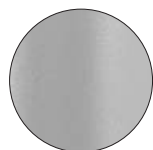
BE200
Beige,
textured-matt finish
Beige,
finitura goffrata-opaca



AL
Aluminium,
smooth-glossy finish
Alluminio,
finitura liscia-lucida



9007
Aluminium,
smooth-matt finish
Alluminio,
finitura liscia-opaca



AG
Aluminium,
textured-matt finish
Alluminio,
finitura goffrata-opaca



GA
Anthracite grey,
textured-matt finish
Grigio antracite,
finitura goffrata-opaca



GN
Natural grey,
textured-matt finish
Grigio naturale,
finitura goffrata-opaca



_NERO
Black,
hammered-matt finish
Nero,
finitura bucciata-opaca



NEF
Black soft-touch,
smooth-matt finish
Nero soft-touch,
finitura liscia-opaca



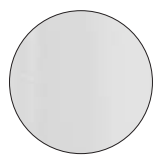
TR
Transparent powder coated,
smooth-matt finish
Verniciatura trasparente,
finitura liscia-opaca

Colours are indicative. Pedrali reserves the right to modify or upgrade the product without prior notice.
I colori sono indicativi. Pedrali si riserva la facoltà di apportare modifiche o migliorie senza alcun preavviso.

Outdoor finishes / Finiture per esterno

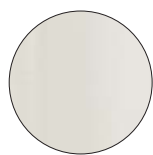


Powder coated cast-iron, steel and aluminium / Ghisa, acciaio e alluminio verniciato



BI100E

White,
textured-matt finish
Bianco,
finitura goffrata-opaca



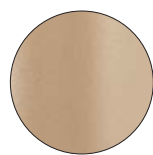
BI200E

White,
textured-matt finish
Bianco,
finitura goffrata-opaca



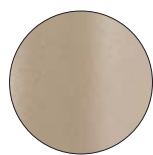
BI300E

White,
smooth-matt finish
Bianco,
finitura liscia-opaca



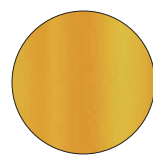
SA100E

Sand,
textured-matt finish
Sabbia,
finitura goffrata-opaca



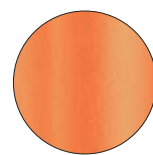
SA200E

Sand,
textured-matt finish
Sabbia,
finitura goffrata-opaca



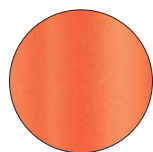
GI100E

Yellow,
textured-matt finish
Giallo,
finitura goffrata-opaca



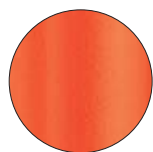
AR200E

Orange,
textured-matt finish
Arancio,
finitura goffrata-opaca



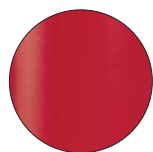
AR500E

Orange,
textured-matt finish
Arancio,
finitura goffrata-opaca



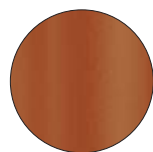
AR400E

Orange,
textured-matt finish
Arancio,
finitura goffrata-opaca



RO200E

Red,
textured-matt finish
Rosso,
finitura goffrata-opaca



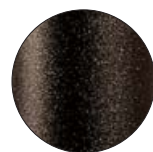
TEE

Terracotta,
textured-matt finish
Terracotta,
finitura goffrata-opaca



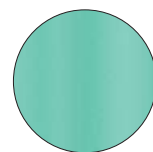
RUE

Rust,
textured-matt finish
Ruggine,
finitura goffrata-opaca



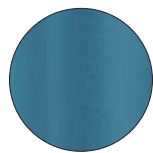
MGE

Brown,
textured-matt finish
Marrone,
finitura goffrata-opaca



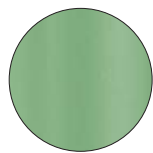
AZ100E

Light blue,
textured-matt finish
Azzurro,
finitura goffrata-opaca



BL300E

Blue,
textured-matt finish
Blu,
finitura goffrata-opaca



VE100E

Sage green,
textured-matt finish
Verde salvia,
finitura goffrata-opaca



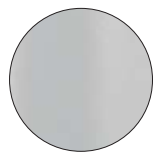
VE300E

Forest green,
textured-matt finish
Verde bosco,
finitura goffrata-opaca



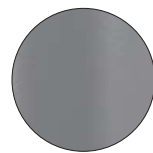
6005E

Green,
smooth-glossy finish
Verde,
finitura liscia-lucida



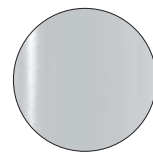
BE100E

Beige,
textured-matt finish
Beige,
finitura goffrata-opaca



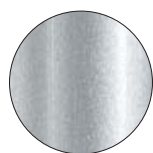
BE200E

Beige,
textured-matt finish
Beige,
finitura goffrata-opaca



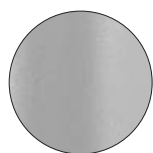
ALE

Aluminium,
smooth-glossy finish
Alluminio,
finitura liscia-lucida



9007E

Aluminium,
smooth-matt finish
Alluminio,
finitura liscia-opaca



AGE

Aluminium,
textured-matt finish
Alluminio,
finitura goffrata-opaca



GAE

Anthracite grey,
textured-matt finish
Grigio antracite,
finitura goffrata-opaca



GNE

Natural grey,
textured-matt finish
Grigio naturale,
finitura goffrata-opaca



NPE

Black,
textured-matt finish
Nero,
finitura goffrata-opaca

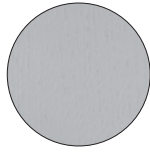
Colours are indicative. Pedrali reserves the right to modify or upgrade the product without prior notice.
I colori sono indicativi. Pedrali si riserva la facoltà di apportare modifiche o migliorie senza alcun preavviso.

Finishes / Finiture

Lacquered wood with visible grains / Legno laccato a poro aperto



BI
White
Bianco



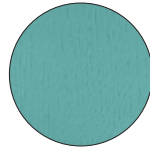
GC
Light grey
Grigio chiaro
PANTONE 400 U



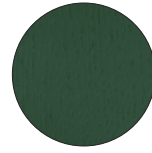
AN
Black
Nero
PANTONE Black U



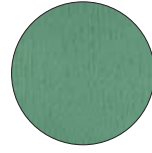
BL2
Dark blue
Blu scuro
PANTONE 539 U



AZ1
Light blue
Azzurro
PANTONE 5503 U



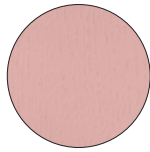
VE2
Dark green
Verde scuro
PANTONE 342 U



VE1
Light green
Verde chiaro
PANTONE 556 U



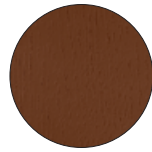
RB
Ruby red
Rosso rubino
PANTONE 1805 U



RA
Pink
Rosa
PANTONE 693 U



MO
Mahogany
Mogano
PANTONE 7603 U



MC
Cognac
Cognac
PANTONE 1675 U

Colours are indicative. Pedrali reserves the right to modify or upgrade the product without prior notice.
I colori sono indicativi. Pedrali si riserva la facoltà di apportare modifiche o migliorie senza alcun preavviso.

Category A

Fabric / Tessuto



A10



A11



A12



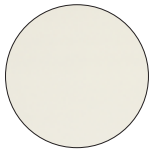
A13



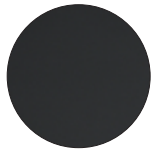
A14

For covering Pasha item 660.8
Per vestina Pasha art. 660.8

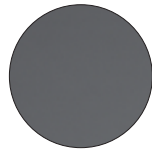
Simil leather / Finta pelle



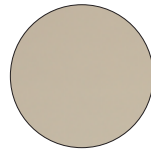
A96



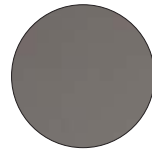
A95



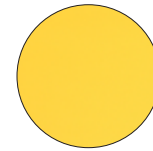
A94



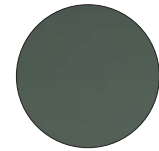
A92



A93



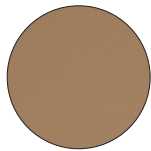
A73



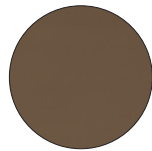
A89



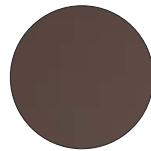
A80



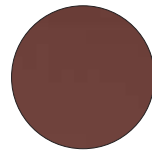
A72



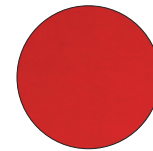
A91



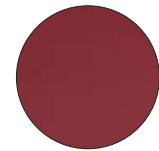
A90



A71



A82



A70

Category B

Nylon / Nylon



B01



B02

For Island item 795-796-797
Per Island art. 795-796-797

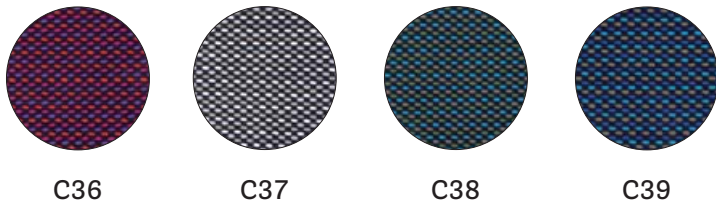
Colours are indicative. Pedrali reserves the right to modify or upgrade the product without prior notice.
I colori sono indicativi. Pedrali si riserva la facoltà di apportare modifiche o migliorie senza alcun preavviso.

Category C

Fire retardant simil leather / Finta pelle ignifuga



Fabric / Tessuto



For Noa, Tweet, Wow, Buddy and the following cushions only:
Social Plus, Blitz, Queen, Pasha, Gliss, Apple and Ikon bench.
Solo per Noa, Tweet, Wow, Buddy e per i seguenti cuscini:
Social Plus, Blitz, Queen, Pasha, Gliss, Apple e Ikon bench

Fire retardant simil leather / Finta pelle ignifuga





Fire retardant simil leather / Finta pelle ignifuga



UNI 9175 CLASSE 1.IM
BS 5852-1 PART 1
BS 5852 CRIB 5 (C90+C95 only)
EN 1021-2
IMO RESOLUTION A.652 (16)
TB 117



Fire retardant fabric / Tessuto ignifugo

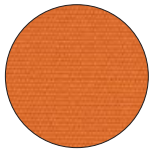


BS EN 1021 1&2 – BS 5852 PART 1 0,1
TB 117

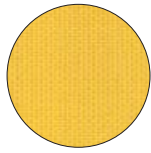
Colours are indicative. Pedrali reserves the right to modify or upgrade the product without prior notice.
I colori sono indicativi. Pedrali si riserva la facoltà di apportare modifiche o migliorie senza alcun preavviso.

Category D

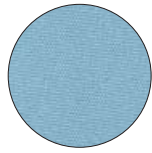
Fabric / Tessuto



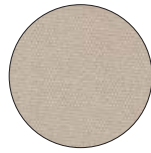
D31



D32



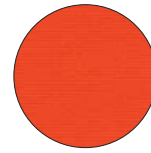
D33



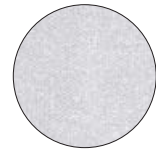
D34



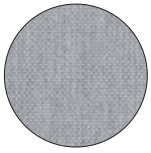
D35



D36



D37



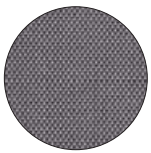
D38



D39

For cushions Intrigo, Nolita, Plus, Plus Air, Reva and Sunset
Per cuscini Intrigo, Nolita, Plus, Plus Air, Reva e Sunset

Fire retardant fabric / Tessuto ignifugo



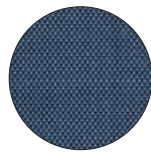
D40



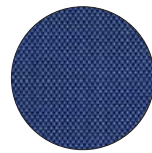
D41



D42



D43



D44



UNI 9175 CLASSE 1.IM
BS 5852 PART 1 0,1
BS EN 1021 1&2
TB 117

Category E

Velvet / Velluto



E01



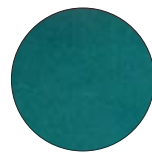
E02



E03



E04



E05

Category F

Genuine leather / Cuoio naturale



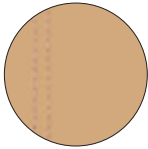
F05



F01



F04



F03



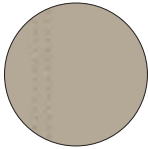
F06



F07



F08



F09

Regenerated leather / Cuoio rigenerato



F11



F12



F13



F17



F18



F19

Colours are indicative. Pedrali reserves the right to modify or upgrade the product without prior notice.
I colori sono indicativi. Pedrali si riserva la facoltà di apportare modifiche o migliorie senza alcun preavviso.

Category G

Fire retardant fabric / Tessuto ignifugo



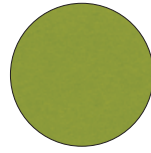
G07



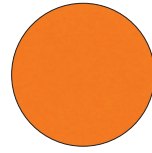
G06



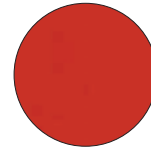
G09



G01



G04



G08

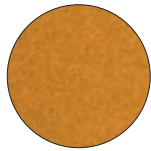


UNI 9175 CLASSE 1.IM
BS 5852 PART 1 0,1
BS EN 1021 1&2
ÖNORM B 3825-B2-3800-Q1 UK
NF P 92-503 M3
TB 117

Fire retardant wool / Lana ignifuga



G21



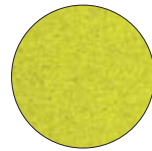
G22



G23



G24

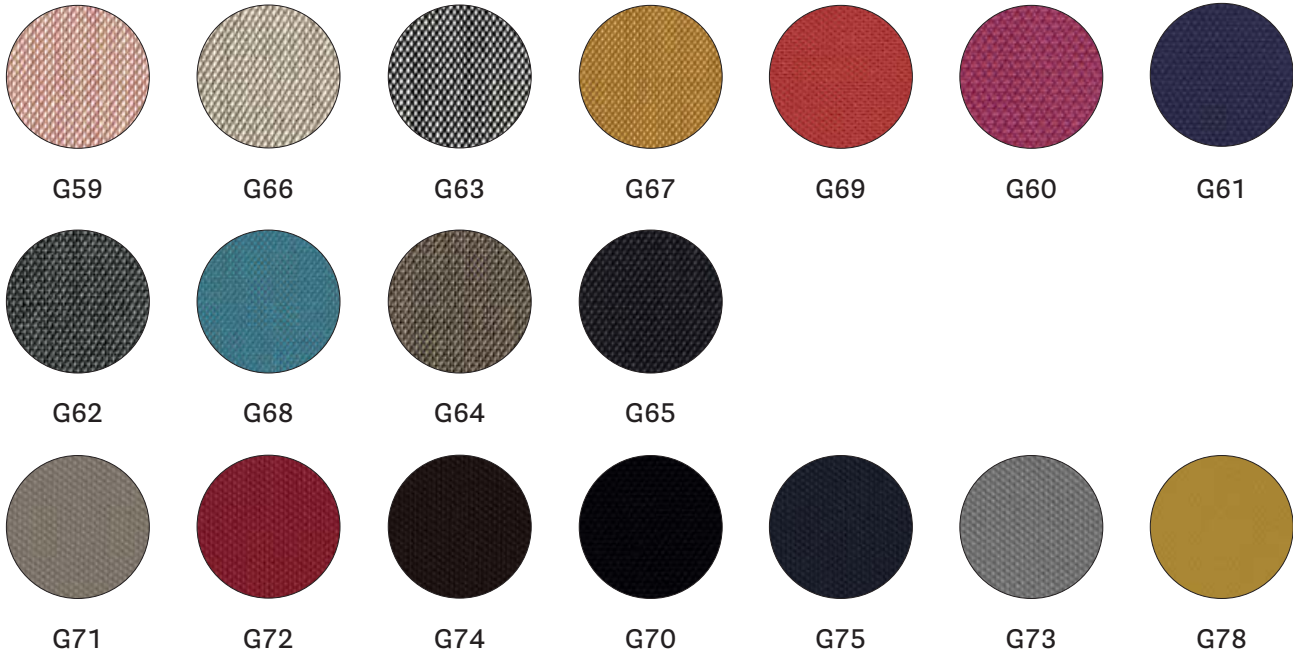


G25



UNI 9175 CLASSE 1.IM
BS 5852 CRIB 5
BS 5852 PART 1
BS 5867 PART 2 TYPE B
EN 13501, C-S1, D0
EN 1021 - 1 / 2
AS/NZS 1530.3
DIN 4102 B2
IMO FTP CODE 2010 PART 8
ÖNORM B1/Q1
NF D 60 013
NFP A 260
TB 117

Fire retardant fabric / Tessuto ignifugo



UNI 9175 CLASSE 1.IM
 BS 5852 PART 1
 EN 1021 - 1 / 2
 AS/NZS 1530.3
 AS/NZS 3837 CLASS 2
 DIN 4102 B2
 IMO FTP CODE 2010 PART 8
 NF D 60 013
 NFPA 260
 ÖNORM B1/Q1
 TB 117

Fire retardant fabric / Tessuto ignifugo



UNI 9175 CLASSE 1.IM
 BS 5852 PART 1
 EN 1021 - 1 / 2
 DIN 4102 B2
 IMO FTP CODE 2010 PART 8
 NF D 60 013
 NFPA 260
 ÖNORM B1/Q1
 TB 117

Colours are indicative. Pedrali reserves the right to modify or upgrade the product without prior notice.
 I colori sono indicativi. Pedrali si riserva la facoltà di apportare modifiche o migliorie senza alcun preavviso.

Fire retardant wool / Lana ignifuga



G110



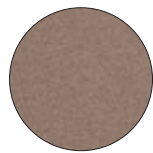
G111



G112



G113



G114



G115

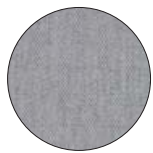


G116



UNI 9175 CLASSE 1.IM
BS 5852 CRIB 5
BS 5852 PART 1
BS 5867 PART 2 TYPE B
EN 13501, C-S1, D0, GLUED
EN 1021-1/2
AS/NZS 1530.3
DIN 4102 B2
IMO FTP CODE 2010 PART 8
ÖNORM B1/Q1
NF D 60 013
NFPA 260
TB 117

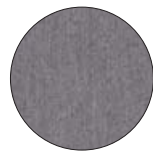
Fire retardant fabric / Tessuto ignifugo



G120



G121

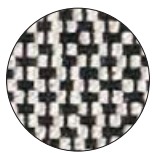


G122

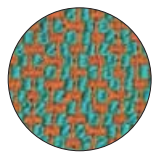


UNI 9175 CLASSE 1.IM
EN 1021-1/2
DIN 4102 B2
IMO FTP CODE 2010 PART 8
ÖNORM B1/Q1
NF D 60 013
NFPA 260
TB 117

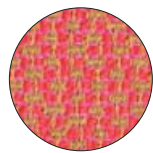
Fire retardant fabric / Tessuto ignifugo



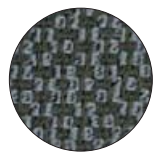
G130



G131



G132



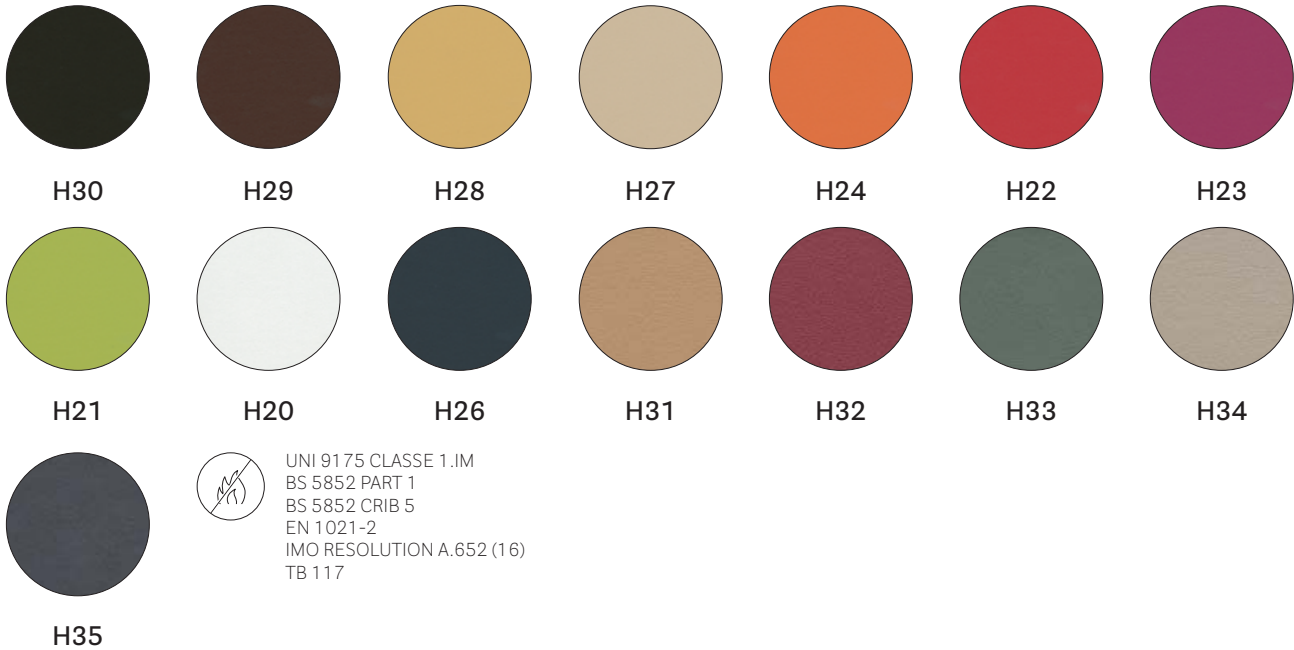
G133



UNI 9175 CLASSE 1.IM
BS 5852 PART 1
BS 5852 (PART 2) CRIB 5
EN 13501-1
EN 1021 1&2
DIN 4102-1 B2
IMO: MED 2014/90/EU
FAR 25.853 (12 sec.vertical)
TB 117

Category H

Fire retardant simil leather / Finta pelle ignifuga

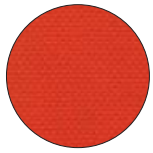


Fire retardant velvet / Velluto ignifugo

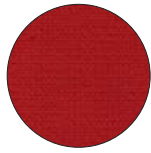


Colours are indicative. Pedrali reserves the right to modify or upgrade the product without prior notice.
I colori sono indicativi. Pedrali si riserva la facoltà di apportare modifiche o migliorie senza alcun preavviso.

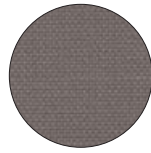
Fire retardant fabric / Tessuto ignifugo



H60



H61



H62



H63

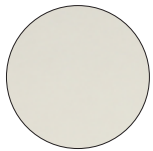


H64

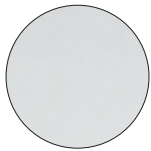


UNI 9175 CLASSE 1.IM
BS 5852 PART 1 0,1
BS EN 1021 1&2
TB 117

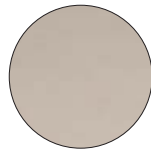
Fire retardant simil leather / Finta pelle ignifuga



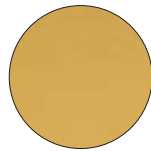
H80



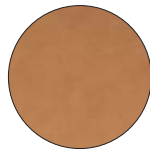
H81



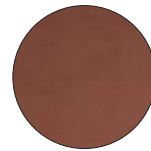
H82



H83



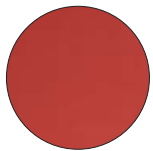
H84



H85



H86



H87



H88



H89



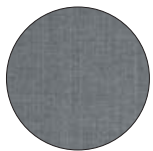
H90



UNI 9175 CLASSE 1.IM
BS 5852 - 1 PART 1
BS 5852 CRIB 5
EN 1021-2
IMO RESOLUTION A.652 (16)
TB 117

Category N

Fire retardant fabric / Tessuto ignifugo



N01



N02



N03



N04



N05



BS 5852 PART 1
EN 1021-1/2
AS/NZS 3837 CLASS 2
DIN 4102 B2
NFPA 260
TB 117

Category P

Mid grain leather / Pelle mezzo fiore



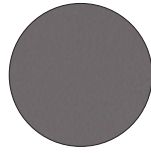
PBI



PSA



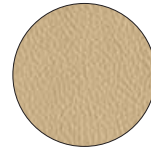
PGC



PGA



PGR



PBE



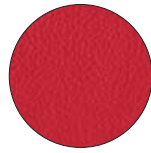
PTA



PMA



PNE

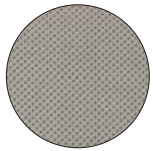


PRO



PTE

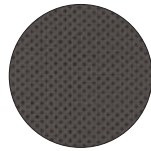
Perforated mid grain leather / Pelle mezzo fiore traforata



PGCF



PGRF



PMAF



PTEF

For Vic and Vic Metal
Per Vic e Vic Metal

Mid grain leather / Pelle mezzo fiore



PBS



PCO



PMS



PVE

For Malmö 296, 391, 396, 242 and 246
Per Malmö 296, 391, 396, 242 e 246