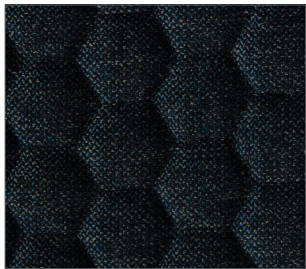


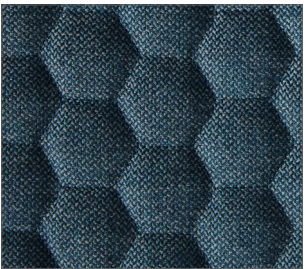
WARWICK Clique



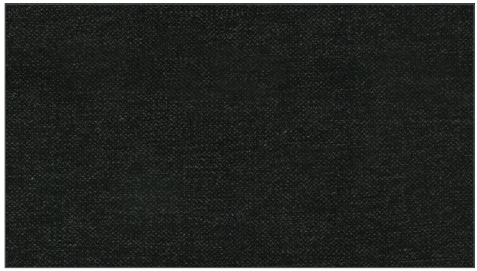
Clique Navy



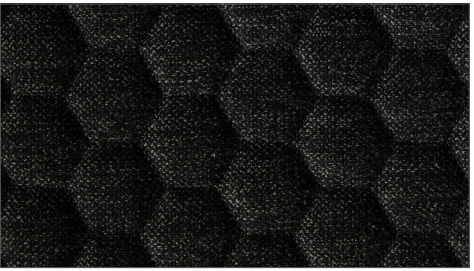
Gravity Navy



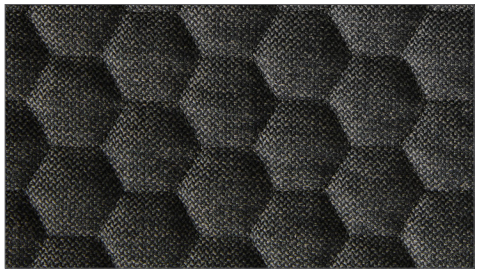
Clique Denim



Gravity Onyx



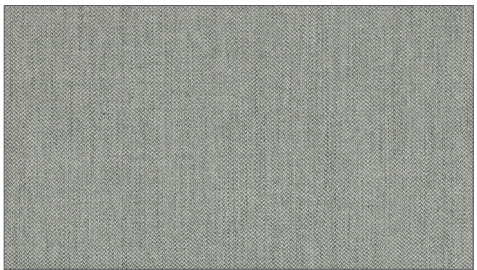
Clique Onyx



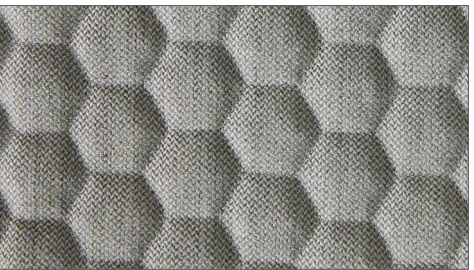
Clique Slate



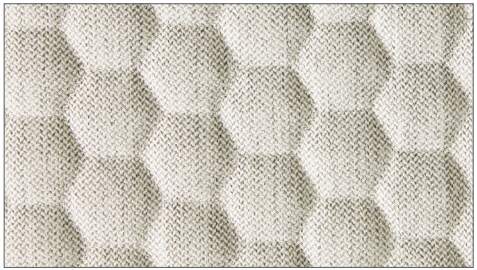
Gravity Slate



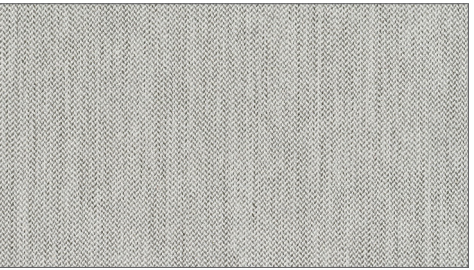
Gravity Steel



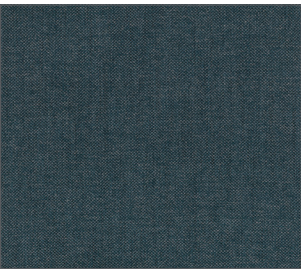
Clique Steel



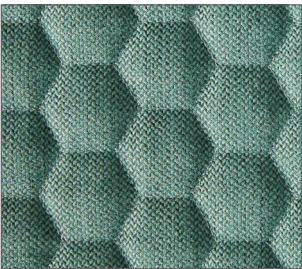
Clique Ice



Gravity Ice



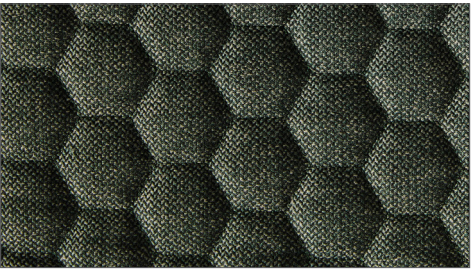
Gravity Denim



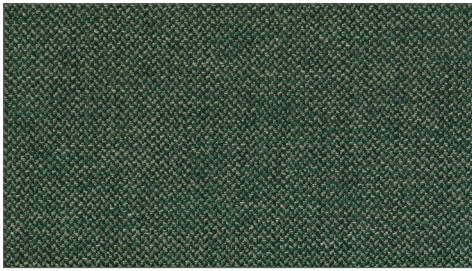
Clique Teal



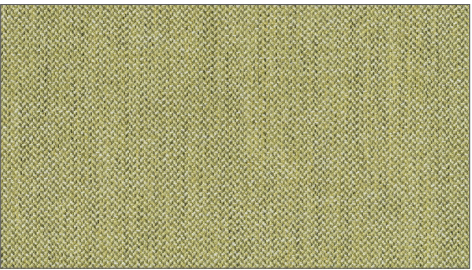
Gravity Teal



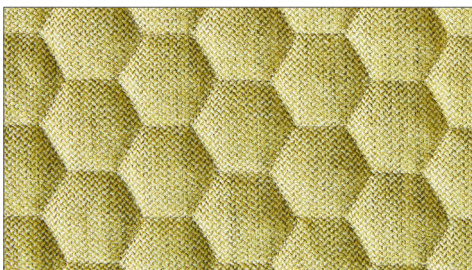
Clique Forest



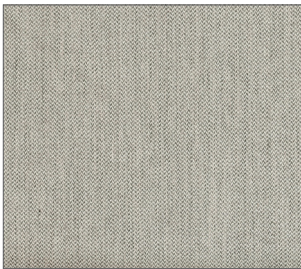
Gravity Forest



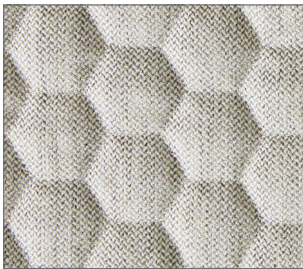
Gravity Apple



Clique Apple



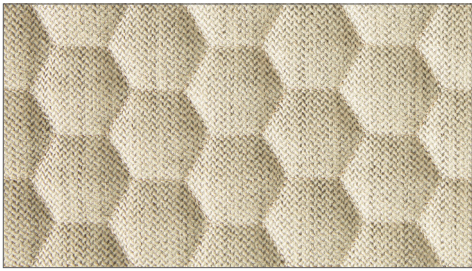
Gravity Sand



Clique Sand



Gravity Driftwood



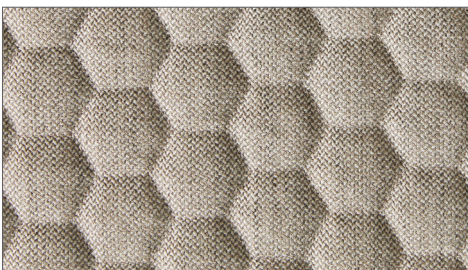
Clique Driftwood



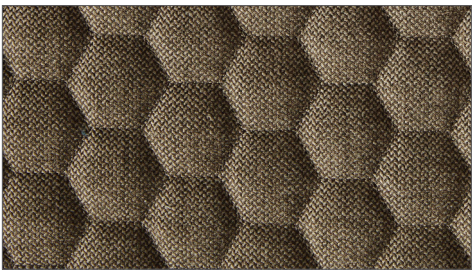
Gravity Mocha



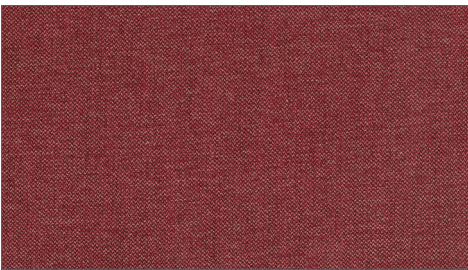
Gravity Chocolate



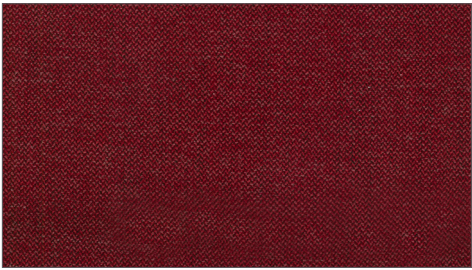
Clique Mocha



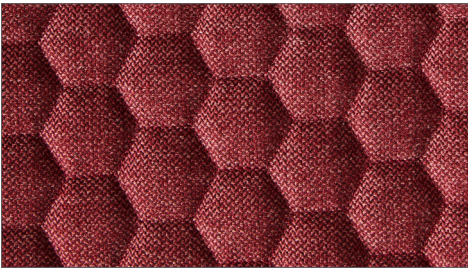
Clique Chocolate



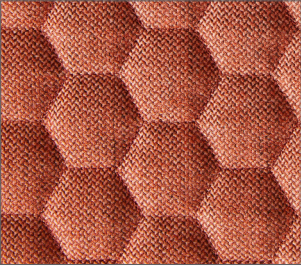
Gravity Pomegranate



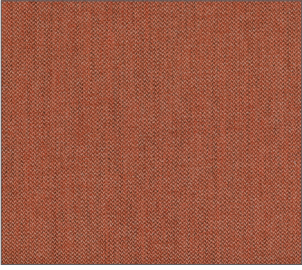
Gravity Scarlet



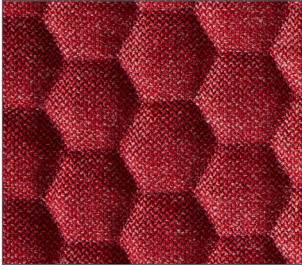
Clique Pomegranate



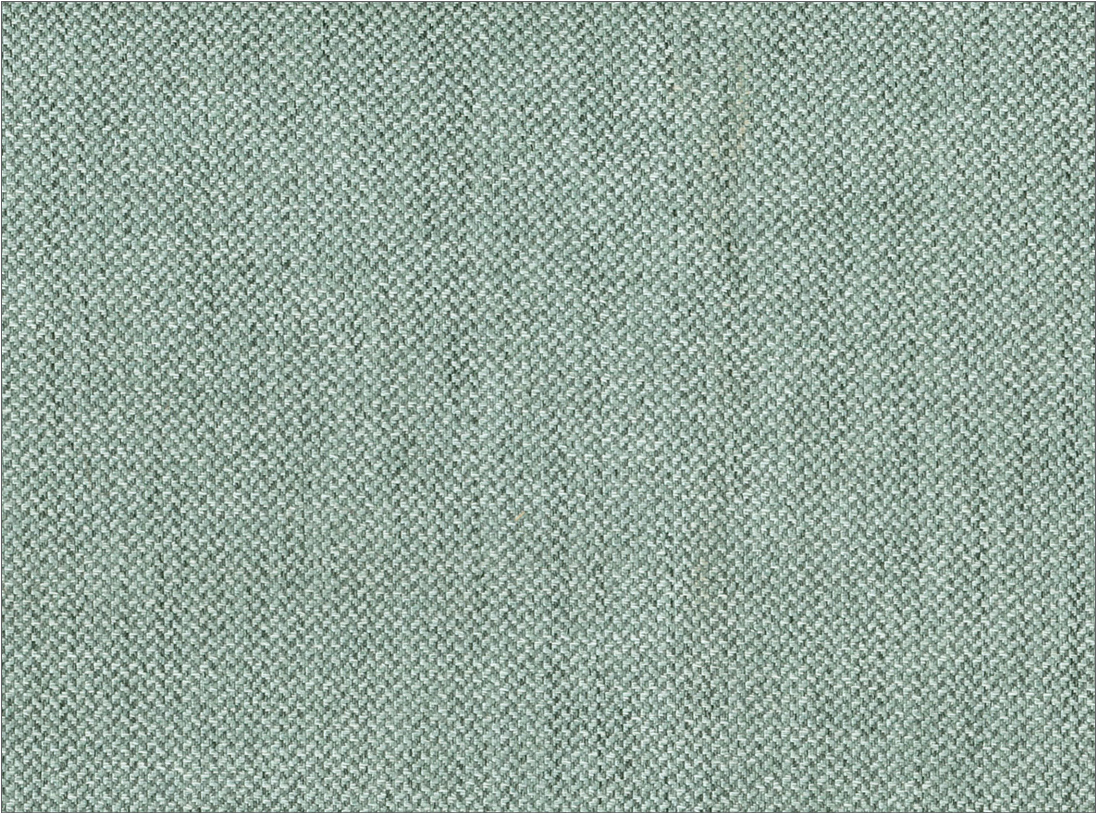
Clique Brick



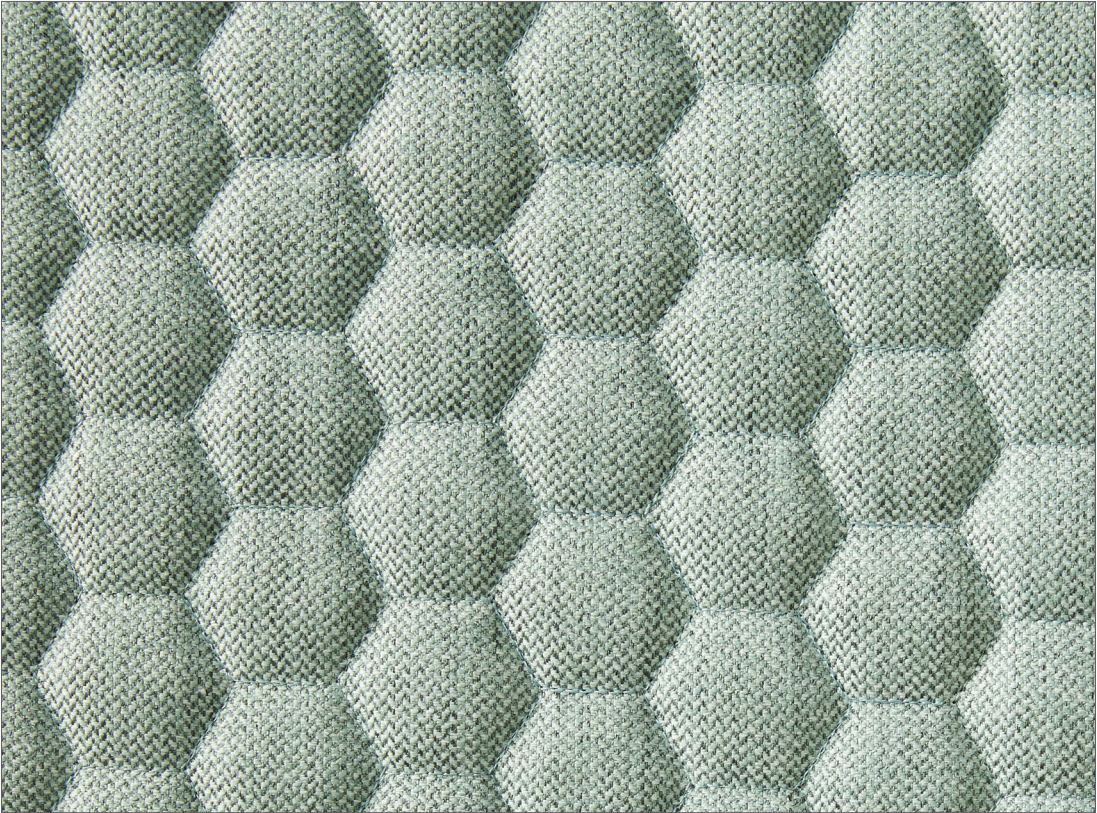
Gravity Brick



Clique Scarlet



Gravity Cloud



Clique Cloud

WARWICK

Clique



Clique

- Commercial Upholstery
- High Performance Quilted Design with Matching Plain
- Group Number Classification 1
- Oeko-Tex Certified
- Fire Rated
- 3 Year Guarantee



WARWICK

Australia
T 1300 787 888
(toll free in Australia)
F +61 [0] 3 9415 7236
F +61 [0] 3 9416 1060
info@warwick.com.au
www.warwick.com.au

New Zealand
T +64 [0] 9 477 3080
F +64 [0] 9 479 6313
info@warwick.co.nz
www.warwick.co.nz

United Kingdom
T +44 [0] 1451 822 383
F +44 [0] 1451 822 369
info@warwick.co.uk
www.warwick.co.uk

RANGE NAME:	CLIQUE	GRAVITY
WIDTH:	138CM	140CM
WEIGHT:	490 GSM	400 GSM
COMPOSITION:	93% POLYESTER 5% COTTON 2% NYLON	93% POLYESTER 5% COTTON 2% NYLON
ABRASION:	70,000 WYZENBEEK	72,000 MARTINDALE
USAGE:	HEAVY COMMERCIAL	HEAVY COMMERCIAL
FR TESTED?	YES	YES

NB: Presented stock may vary from these samples

- Features**
- **Strength and Durability:** Tested for heavy commercial upholstery applications and extended performance and appearance characteristics.
 - **Fire Rated:** Tested to comply with AS1530.3 and AS/NZ 3837-1998.
 - **Oeko-Tex:** Tested for harmful substances and found to comply with all required criteria for environmentally friendly production facilities.
 - **Customisation:** Our Design Studio is able to develop custom designs and colour for your personalised requirements. Please contact your local representative for further information.
 - **Guarantee:** 3 Years. Please see www.warwick.com.au for further information.

Australian and New Zealand Test Standards	
Martindale Rub Test: (ISO 12947-2)	Heavy Duty Commercial Rating Test Report Available on Request
Wyzenbeek Rub Test: (ASTM D3597)	Heavy Duty Commercial Rating Test Report Available on Request
Fire Hazard Properties:	AS 1530 Part III Conducted AS/NZ 3837-1998 Conducted - Group Number Classification 1 Test Report Available on Request

Warwick performance standards meet or exceed industry requirements. Please note that test results are intended as a guide and should be considered in conjunction with the fabric usage.

Warwick Fabrics have a commitment to our care of the environment. We request that if these samples are no longer required please contact your local Warwick Fabrics Showroom so that we may recycle them. Thank you.



Adelaide
Brisbane
Canberra

Gold Coast
Melbourne
Perth

Sydney
India
New Zealand

South Africa
UAE
United Kingdom

