

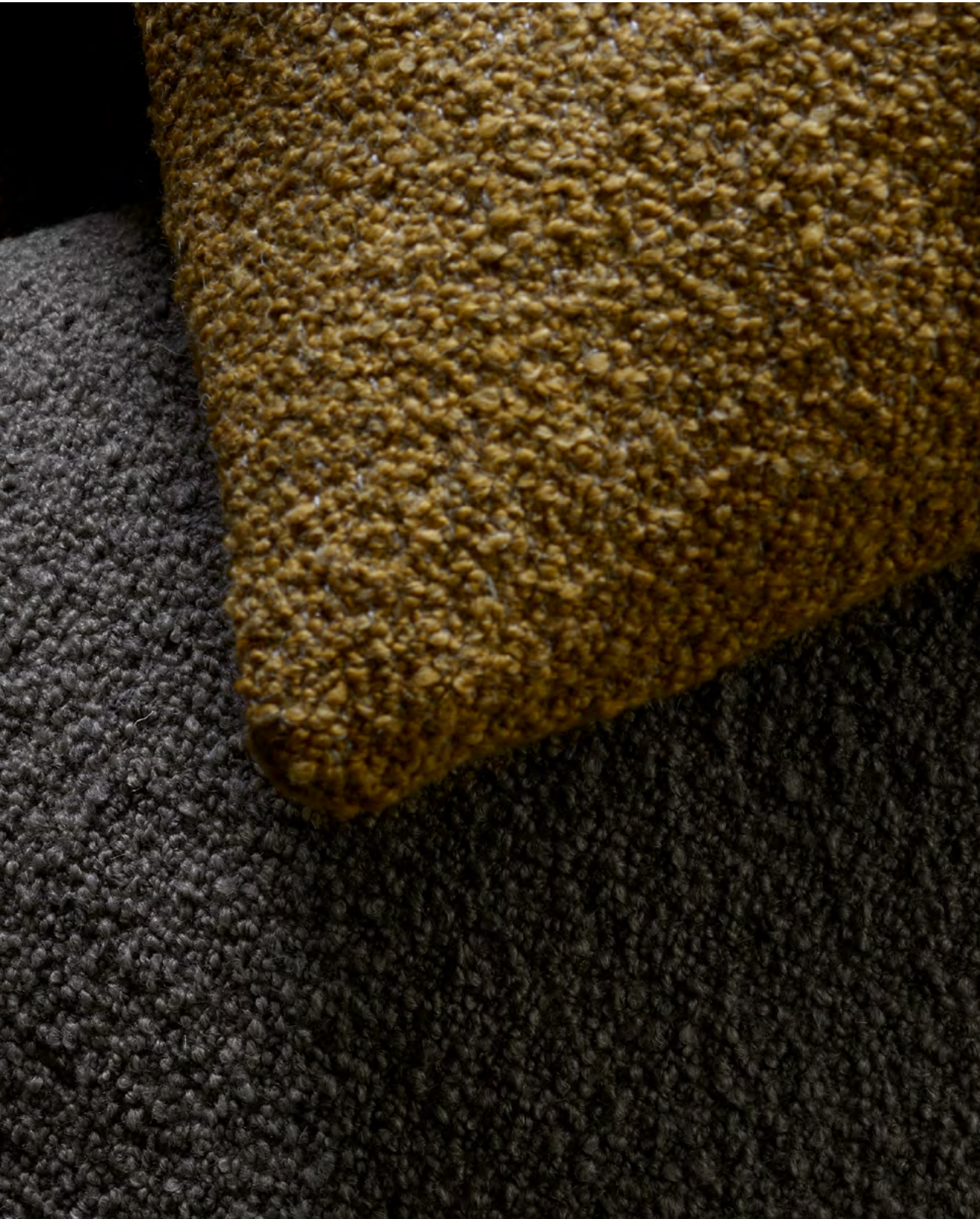


WENDELBO

2021



WENDELBO CONTRACT  
COLLECTION  
**FABRICS & LEATHER**



# Index Fabric

6-7	<b>Comfort</b>
8-9	<b>Cuddle</b>
10-11	<b>Juke</b>
12-13	<b>North</b>
14-15	<b>Soft</b>
16-17	<b>Roco</b>

# Index Leather

18-19	<b>Barona</b>
20-21	<b>Patrol</b>
22-21	<b>Solo</b> (artificial leather)

# Preferred partners

## **camira**

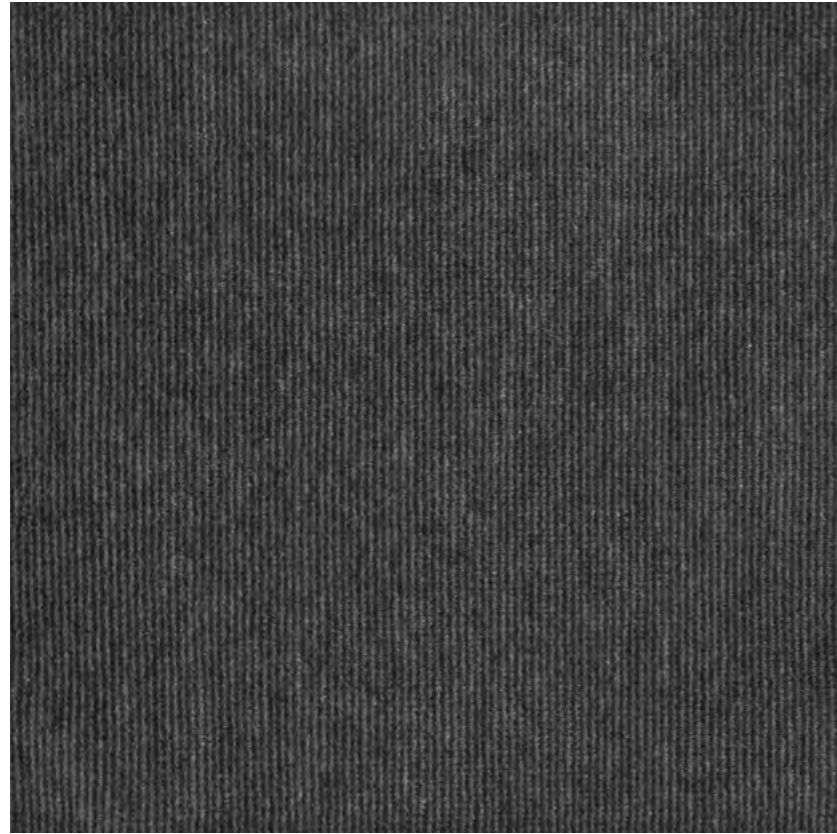
Main Line Flax  
Main Line Plus  
Sumi  
Yoredale

## **Gabriel**

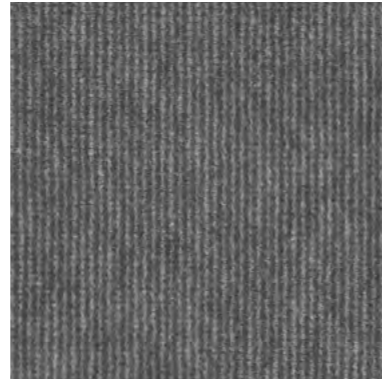
Breeze Fusion  
Capture  
Connect  
Crisp  
Criss Cross  
Cura  
Grain  
Harmony  
Mood  
Noma  
Passion  
Savoy  
Step Melange

## **kvadrat**

Canvas 3  
Fiord  
Hallingdal  
Harald 3 \*  
Maple  
Melange Nap  
Parkland  
Recheck  
Reflect  
Relate  
Remix  
Re-wool  
Steelcut Trio  
Sunniva 3  
Tonus 3



Col. 02



Col. 04



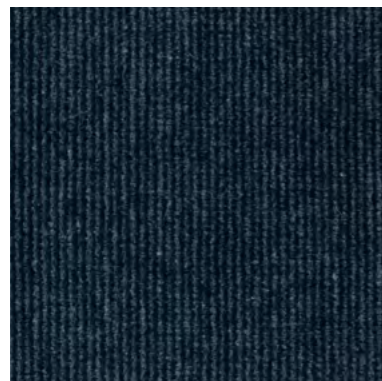
Col. 06



Col. 08



Col. 10








Col. 12



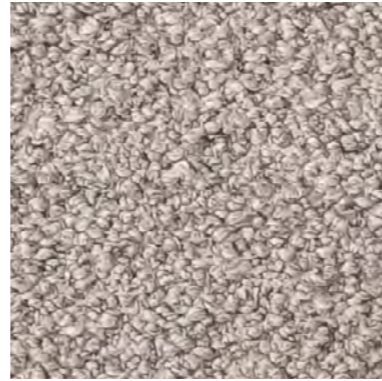
Col. 14

## Comfort

Composition	80% pl./20% co.	
Width	140 cm -[55']	
Martindale/Abrasion	EN 12947-2	100.000
Pilling	Scale 1-5, max. 5 EN ISO 12945-2	5
Light Fastness	Scale 1-8, max. 8 EN ISO 105-B02	3-5
Flammability	BS 5852 Crib 5	Not confirmed
	BS 5852 Cigarette & match	Cigarette confirmed
Maintenance	    	
Price Grp.	Grp. 1-11, max. 11	5



Col. 02



Col. 04



Col. 06



Col. 08



Col. 10



Col. 12








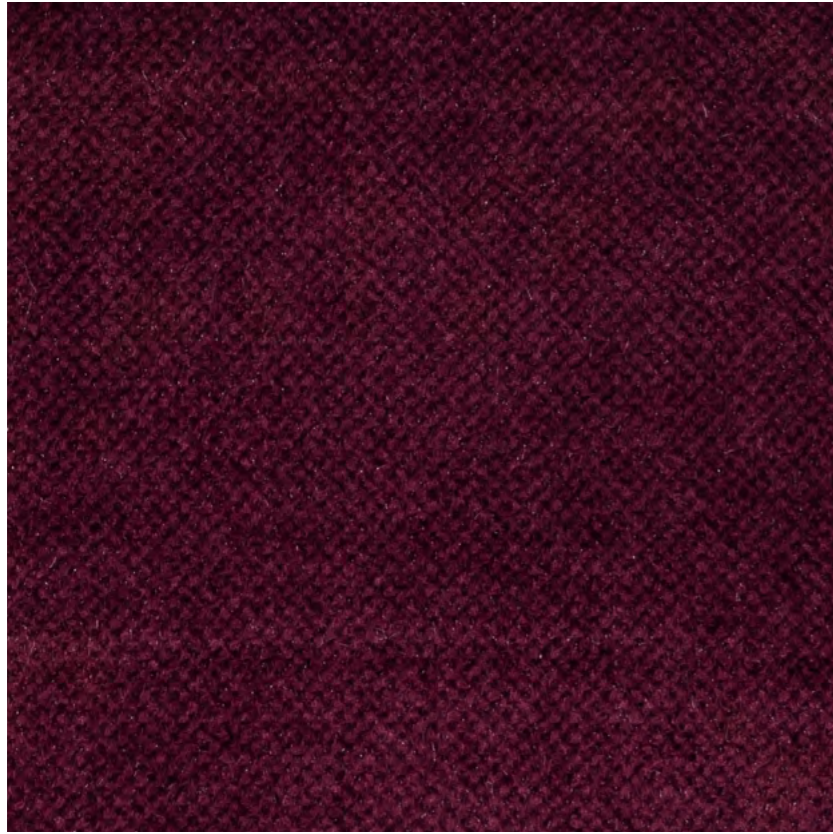
Col. 14



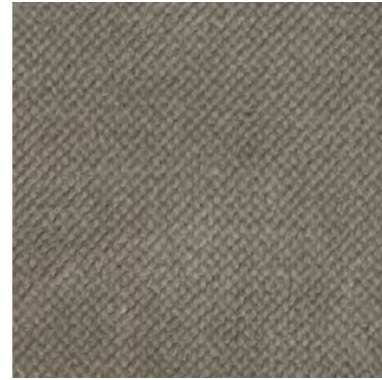
Col. 16

## Cuddle

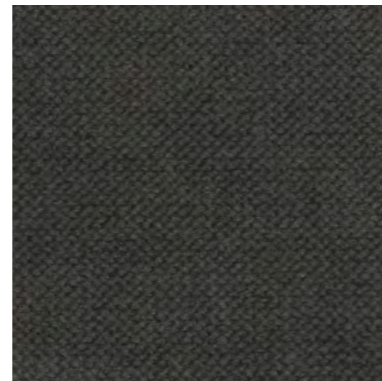
Composition	34% vi./33% pc./17% wo./8% pl./4% li./4% co.	
Width	140 cm -[55"]	
Martindale/Abrasion	EN 12947-2	50.000
Pilling	Scale 1-5, max. 5 EN ISO 12945-2	5
Light Fastness	Scale 1-8, max. 8 EN ISO 105-B02	4-5
Flammability	BS 5852 Crib 5	Not confirmed
	BS 5852 Cigarette & match	Confirmed
Maintenance	    	
Price Grp.	Grp. 1-11, max. 11	6



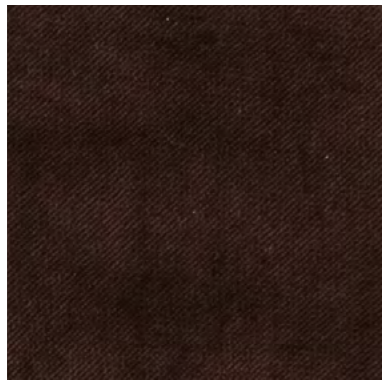
Col. 39



Col. 51



Col. 79



Col. 123



Col. 126



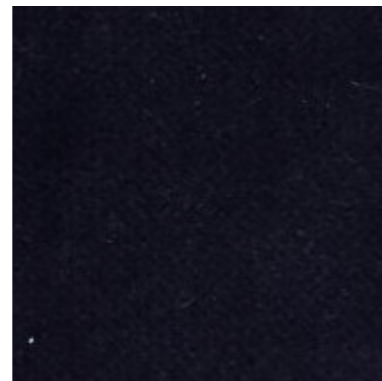
Col. 132



Col. 156








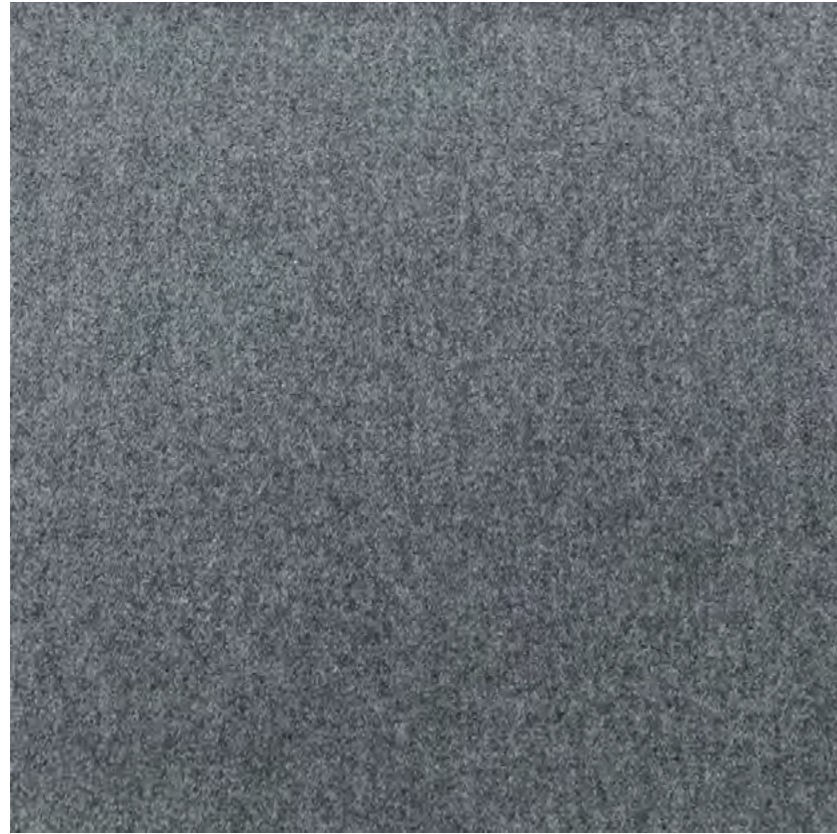
Col. 158



Col. 178

## Juke

Composition	90% pes./10% co.
Width	140 cm -[55']
Martindale/Abrasion	EN 12947-2 100.000
Pilling	Scale 1-5, max. 5 EN ISO 12945-2 5
Light Fastness	Scale 1-8, max. 8 EN ISO 105-B02 4-5
Flammability	BS 5852 Crib 5 Not confirmed BS 5852 Cigarette & match Cigarette confirmed
Maintenance	    
Price Grp.	Grp. 1-11, max. 11 2



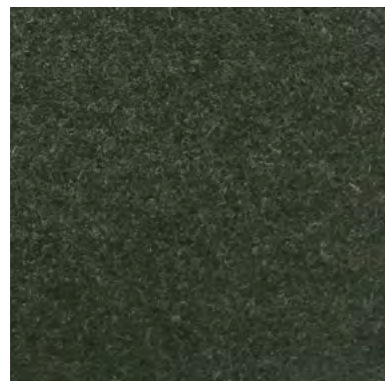
Col. 02



Col. 04



Col. 06



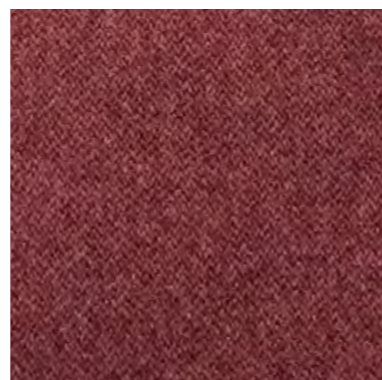
Col. 08



Col. 10








Col. 12



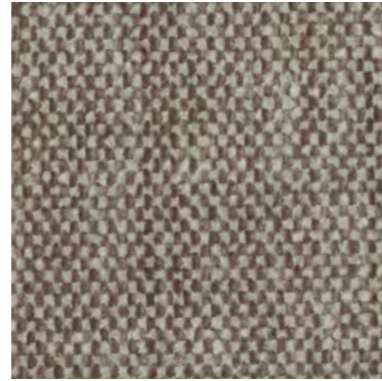
Col. 14

## North

Composition	70% wo./20% pl./5% pa./5% pc.	
Width	140 cm -[55']	
Martindale/Abrasion	EN 12947-2	60.000
Pilling	Scale 1-5, max. 5 EN ISO 12945-2	3-5
Light Fastness	Scale 1-8, max. 8 EN ISO 105-B02	5
Flammability	BS 5852 Crib 5	Confirmed with treatment
	BS 5852 Cigarette & match	Confirmed
Maintenance	    	
Price Grp.	Grp. 1-11, max. 11	3



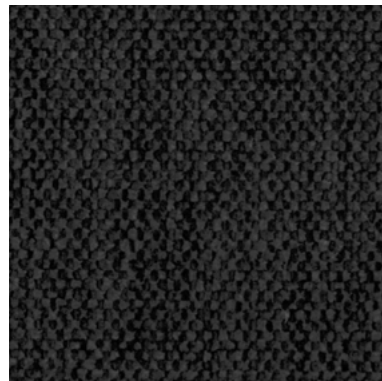
Col. 02



Col. 03



Col. 04



Col. 06



Col. 08



Col. 10








Col. 12



Col. 14

## Soft

Composition	47% pol./43% ac./10% co.	
Width	140 cm -[55"]	
Martindale/Abrasion	EN 12947-2	50.000
Pilling	Scale 1-5, max. 5 EN ISO 12945-2	3-4
Light Fastness	Scale 1-8, max. 8 EN ISO 105-B02	5
Flammability	BS 5852 Crib 5	Not confirmed
	BS 5852 Cigarette & match	Confirmed
Maintenance	    	
Price Grp.	Grp. 1-11, max. 11	3





Col. 02



Col. 04



Col. 06



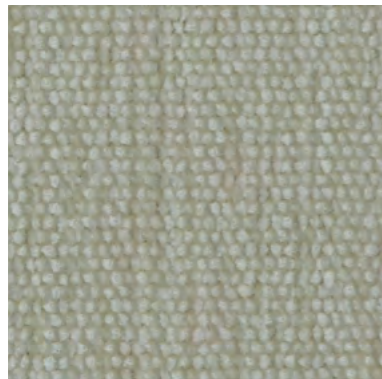
Col. 08



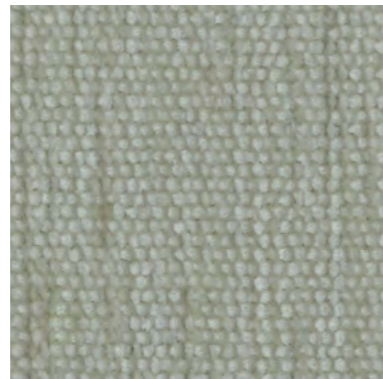
Col. 10



Col. 12



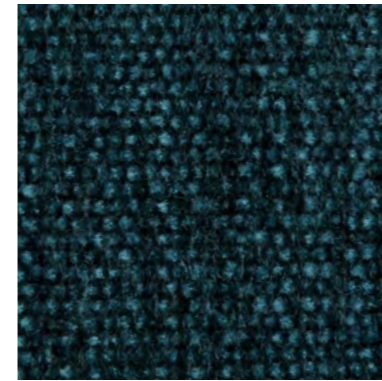
Col. 14



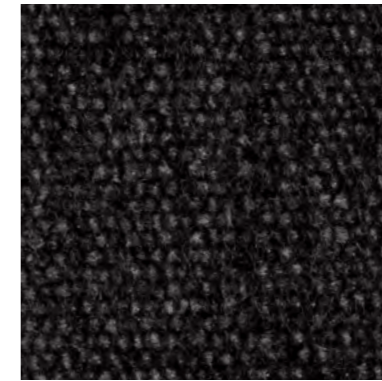
Col. 16



Col. 18



Col. 20








Col. 22



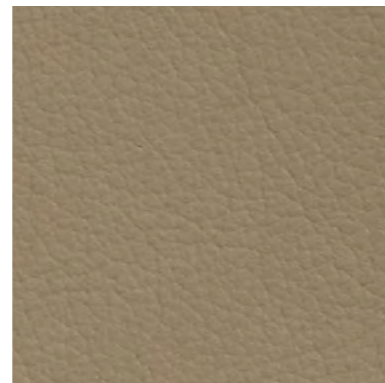
Col. 24

## Roco

Composition	32% co./48% pc./20% pl.	
Width	140 cm -[55"]	
Martindale/Abrasion	EN 12947-2	40.000
Pilling	Scale 1-5, max. 5 EN ISO 12945-2	4
Light Fastness	Scale 1-8, max. 8 EN ISO 105-B02	5
Flammability	BS 5852 Crib 5	Not confirmed
	BS 5852 Cigarette & match	Confirmed with treatment
Maintenance	    	
Price Grp.	Grp. 1-11, max. 11	4



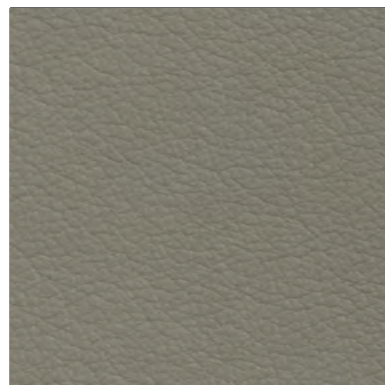
Barona Ivory



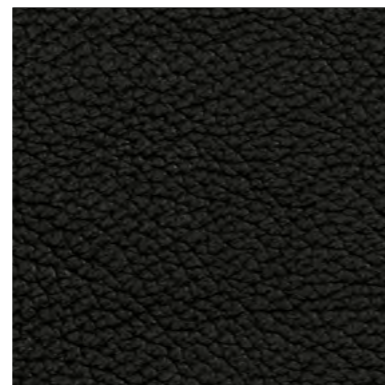
Barona Sandal Wood



Barona Sable



Barona Grey



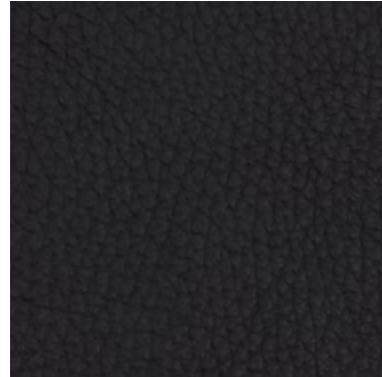
Barona Black

## Barona

Composition	Light Pigmented soft leather	
Thickness	0,9-1,1 mm	
Flammability	BS 5852 Crib 5	Confirmed
	BS 5852 Cigarette & match	Confirmed
Maintenance	Clean with damp cloth	
Price Grp.	Grp. 1-11, max. 11	10



Patrol Black



Patrol Brown



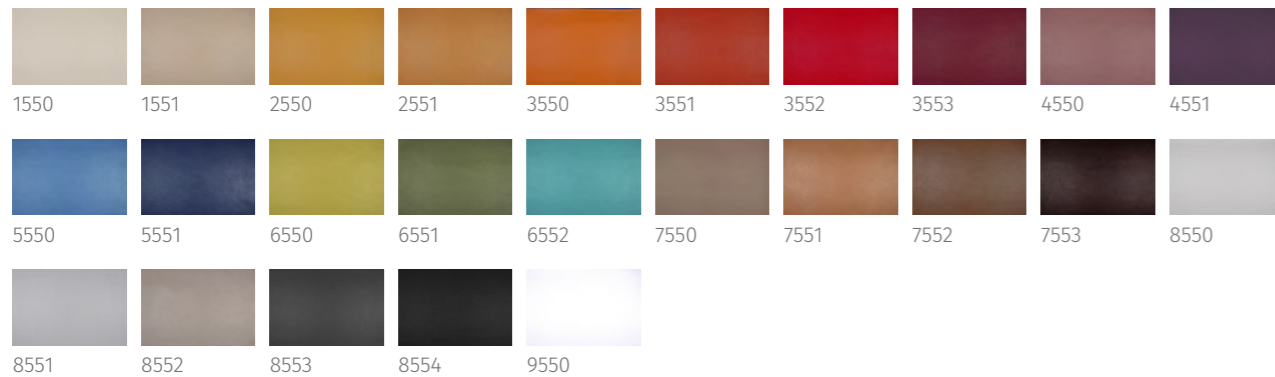
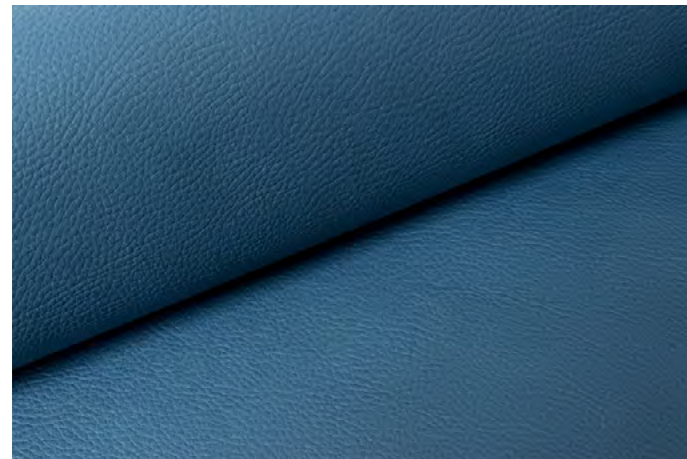
Patrol Cognac

## Patrol

Composition	Semi aniline, corrected grain	
Thickness	1,2-1,4 mm	
Flammability	BS 5852 Crib 5	Confirmed
	BS 5852 Cigarette & match	Confirmed
Maintenance	Clean with damp cloth	
Price Grp.	Grp. 1-11, max. 11	9

## Solo

Article Number 36868



Width	140 cm
Weight	660 g/m <sup>2</sup>
Repeat	no repeat
Composition	100% PU with PES/CO - coating
Flame resistance	DIN EN 1021 Teil 1, DIN EN 1021 Teil 2, BS 5852 Crib 5, IMO Res. A652 (16), Flammability performance is dependant on the foam used.
Light fastness	6-7
Rub fastness DIN EN ISO 105-X12	dry: note 5, wet: note 5
Abrasion to Martindale DIN EN ISO 12947-2 DIN EN 14465-2006	300000
Spray test - resistance to surface wetting DIN EN 24920	4
Hydrostatic pressure test DIN EN 20811	60 mbar
Care	
Other	See cleaning instructions for artificial leather products. Bright colours are not suitable for use in public areas.

Therefore, discolorations caused by soiling do not constitute grounds for complaint!

The above technical data are average values. These values only describe the technical characteristics and the chemical composition of the delivered goods. Warranties are not given.



Wendelbo A/S  
Mosevej 20 A  
DK - 8240 Risskov

+45 87 400 800  
[wmd@wendelbo.dk](mailto:wmd@wendelbo.dk)  
[www.wendelbo.dk](http://www.wendelbo.dk)  
[@wendelbodk](#)