

Fabrics

To choose the right fabric is almost as important as to choose the correct piece of furniture. We collaborate with the best textile producers in the world and are able to send you samples on request. See a small selection below.



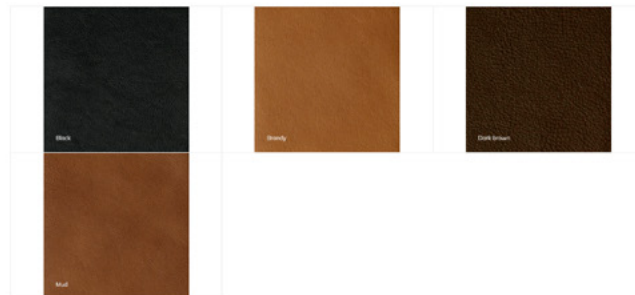
Leather

Challenger

Challenger is a sustainable manufactured leather, designed to be gentle on humans and the environment. Produced by the renowned Italian family company Marchetto in the mountains of northern Italy, Challenger makes optimal use of its local conditions – the waters of the pure mountain streams make the skins extra soft, reducing the need for additives.

Both Marchetto and independent authorities carry out extensive testing on the carefully purified water before it is released back into the river. The sludge that is removed from the wastewater is dried and used for energy production in district heating plants. Only vegetable oils are used in manufacturing.

Challenger leather, and the raw hides are dried at low temperatures, which also contributes to added softness. Challenger is manufactured only of European raw hides whose origin is certified. They have a long service life, beyond the throw-away culture of today



Vitoria

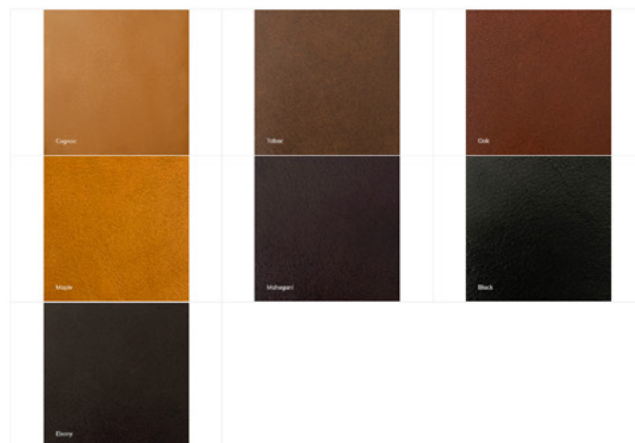
A sustainable choice – Chrome free premium leather with olive leaf tanning.

There is a genuine innovation in tanning leather. Extracts with tanning effects are obtained from olive leaves. The use of these extracts simplifies the tanning procedure and allows a sustainable production of ecological leathers.

The tanning consists of renewable raw materials that are partly still disposed with energy expenditure. Consequently, the procedure does not compete with food production and in addition, the production areas have a lower burden.

In Europe, there are harvests of about 12 million tons of olives every year. The major part is used for production of olive oils and the natural leaves quantity is sufficient to tan up to 600 million square meters of leather.

Vitoria is manufactured only of European raw hides whose origin is certified. They have a long service life, beyond the throw-away culture of today. It has a soft and at the same time robust feeling and will age with character.



Dakar

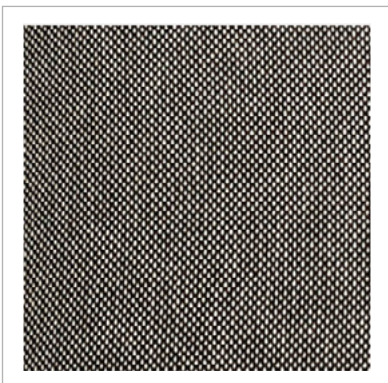
Italian aniline leather, Dakar is smooth waxy grained. With its soft and luxurious feeling it fits well on our furniture. This color, Cognac Dull, will be added to our stock program of Seventy series.





Anima

Piece-dyed with a rich palette, ANIMA blends ultra-microfiber and matte chenille in a refined jacquard texture with a strong sense of identity. With a finishing treatment that adds a subtly faded look to the fabric's surface, there is a natural beauty to ANIMA that is elegant and captivating.



Blues

Blues CS II is a furniture fabric for public environments with the character of 3D effect thanks to special weaving technology.



Blues II CS

100% Trevira CS	100% Trevira CS
180/22 cm	180/22 cm
400/15 g/m ²	400/15 g/m ²
80/0/0	80/0/0
4-2 (D)	4-2 (D)
5 (D)	5 (D)
5 (D)	5 (D)
7 (D)	7 (D)
EN 1313 143, Cal 113, Cal 5,	EN 1313 143, Cal 113, Cal 5,
802 FTR Code Part 8, 80, 84,	802 FTR Code Part 8, 80, 84,
USA NFPA 260, USA NFPA 703	USA NFPA 260, USA NFPA 703
40° Jk, Steam/Iron Dry cleaning	40° Jk, Steam/Iron Dry cleaning
1 mm wavy, 1.3 mm web	1 mm wavy, 1.3 mm web
5 (D)	5 (D)
5 (D)	5 (D)
5 (D)	5 (D)
4-5 (D)	4-5 (D)
5 (D)	5 (D)
5 (D)	5 (D)

100% Trevira CS
 180/22 cm
 400/15 g/m²
 80/0/0
 4-2 (D)
 5 (D)
 5 (D)
 7 (D)
 EN 1313 143, Cal 113, Cal 5,
 802 FTR Code Part 8, 80, 84,
 USA NFPA 260, USA NFPA 703
 40° Jk, Steam/Iron Dry cleaning
 1 mm wavy, 1.3 mm web
 5 (D)
 5 (D)
 5 (D)
 4-5 (D)
 5 (D)
 5 (D)



100% Trevira CS
 180/22 cm
 400/15 g/m²
 80/0/0
 4-2 (D)
 5 (D)
 5 (D)
 7 (D)
 EN 1313 143, Cal 113, Cal 5,
 802 FTR Code Part 8, 80, 84,
 USA NFPA 260, USA NFPA 703
 40° Jk, Steam/Iron Dry cleaning
 1 mm wavy, 1.3 mm web
 5 (D)
 5 (D)
 5 (D)
 4-5 (D)
 5 (D)
 5 (D)

nevotex
www.nevotex.de

Sheepskin

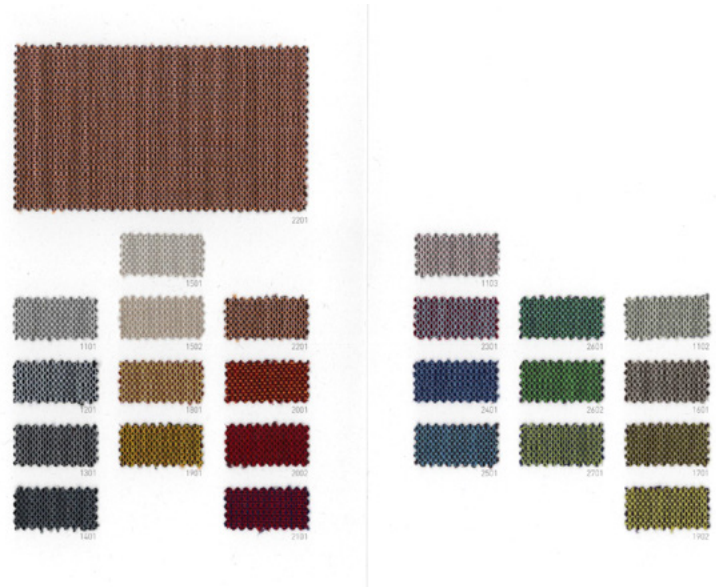
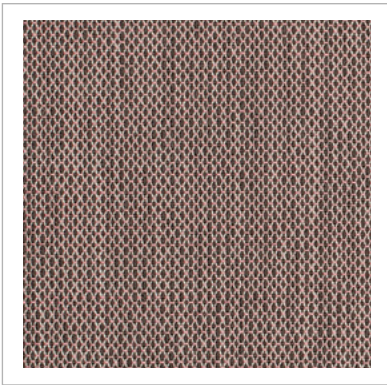
Comes in three color Moonlight, Sahara and Grey
 In the Classic Collection, the wool has been dyed with highlighted tips and darker base which gives the overall appearance a beautiful marbled finish.



CrissCross

With its stunning colour palette, CrissCross achieves a depth which almost creates a three-dimensional effect and leaves an impression of a textile woven in several layers.

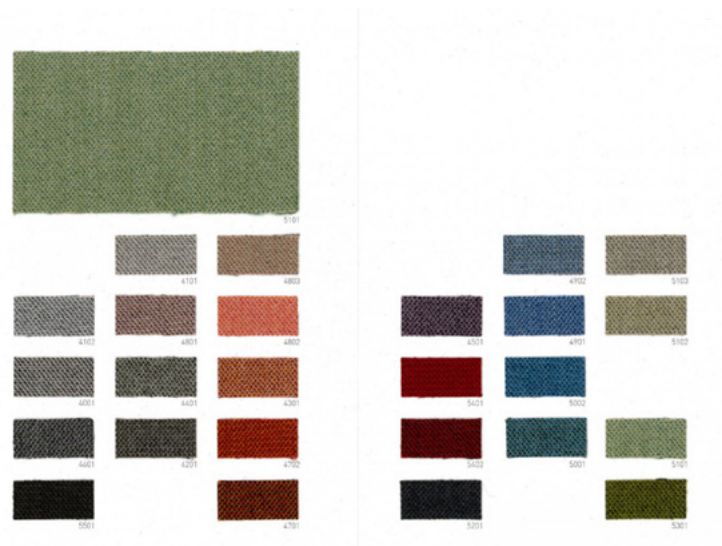
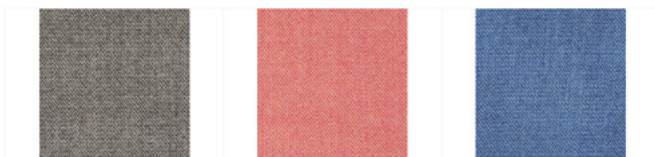
Composition: 89% wools of New Zealand, 11% polyamide
Martindale: 110.000
Washing: Dry cleaning P(S)



Capture

Capture is a lightly felted and multi-coloured wool fabric in a casual yet sophisticated tweed look.

Composition: 85% wools of New Zealand, 15% polyamide
Martindale: 200.000
Washing: Dry cleaning P(S)



Linara

Linara is a collection of 222 different colours. Find your favourite at your closest retailer.

Composition: 63% cotton, 37% linen

Martindale: 36.000

Washing: 40°



Geneva Vintage

Strong fabric with a stonewash effect finish, which gives the fabric a faded casual appearance.

Composition: 60% cotton, 40% linen

Martindale: 30 000

Washing: 30°



Rock

Composition: 100% Trevira CS (Polyester)

Martindale: 70.000

Washing: 60° water wash or dry wash



ROCK CS
 Composition: 100% Trevira CS
 Martindale: 70 000
 Weight: 350 gr/m²
 Width: 140 cm
 Flame retardancy: EN 1021/1-2, IMO A652
 Light fastness: 6 out of 8
 Dry rubbing: 4-5 out of 5
 Pilling: 5 out of 5 (2000 cycles)
 Washing instructions: 60° or dry cleaning
 Place of origin: Italy
 Fabric is suitable for environments with high demands of durability.

Sahara

Sahara is a plain, soft brushed cotton available in 71 colours.

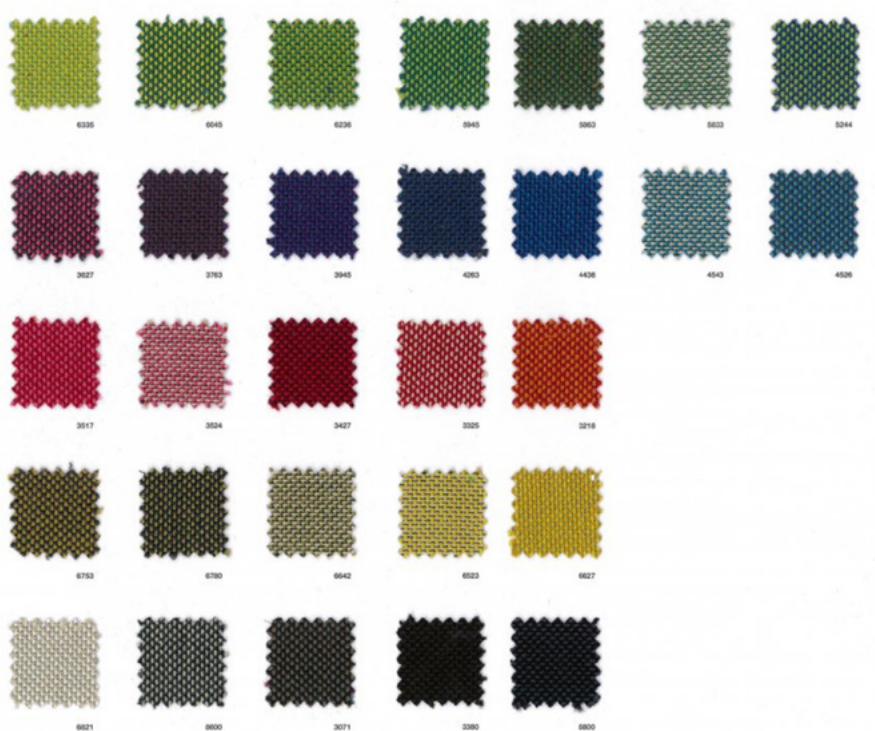
Composition: 100% cotton
Martindale: 65 000
Washing: 30°



Key

Key fabric has a unique colour structure, which gives character to the fabric together with the proprietary boucle yarn. The 30 colorways contain many combinations, both classic and more exciting ones. The square setting makes the fabric trendless and easier to handle.

Composition: 100% Trevira CS (Polyester)
Martindale: 50.000
Washing: 60°



KEY

Design: Eva Larsson

BREDD: 140 cm
MATERIAL: 100% Trevira CS
VKTI: 485 g/m²
RYTTNING: 2 %

HÖJNING:
 enligt EN ISO 12947-2
 Martindale
 50.000 styck

FÄRHÄLDIGHET:
 mot ljus enligt
 EN ISO 105-B02
 5-7 (Skala 1-6)
 mot gnällning enligt
 EN ISO 105-X12
 4 (Skala 1-5)
 tvätt
 3-4 (Skala 1-5)

SÄKERHET:
 EN ISO 1021-1
 DN 4102-1 Klass B1
 SE 5402-Cat B
 MCO FFP Code 2010, Part B

VÅRDSBETINGNING:

WIDTH: 157/140 cm
MATERIAL: 100% Trevira CS
WEIGHT: 485 g/m²
STRETCHING: 2 %

ABRASION RESISTANCE:
 according to EN ISO 12947-2
 Martindale
 50.000 cycles

COLOR FASTNESS:
 against light according to
 EN ISO 105-B02
 5-7 (Scale 1-6)
 against rubbing according to
 EN ISO 105-X12
 4 (Scale 1-5)
 wet
 3-4 (Scale 1-5)

FLAME RETARDANCY:
 EN ISO 1021-1 Part B:2
 DN 4102-1 Class B1
 SE 5402-Cat B
 MCO FFP Code 2010, Part B

CARE INSTRUCTION:

BREITE: 140 cm
MATERIAL: 100% Trevira CS
GEWICHT: 485 g/m²
DEHNUNG: 2 %

SCHLEIFRESISTENZ:
 nach EN ISO 12947-2
 Martindale
 50.000 Stucke

FARBECHEIT:
 gegen Licht nach
 EN ISO 105-B02
 5-7 (Skala 1-6)
 gegen Reibung nach
 EN ISO 105-X12
 trocken
 4 (Skala 1-5)
 nass
 3-4 (Skala 1-5)

SCHWENDELAMMBAKKEIT:
 EN ISO 1021-1 Teil B:2
 DN 4102-1 Klasse B1
 SE 5402-Cat B
 MCO FFP Code 2010, Part B

PFLIEGEBEHWEIS:

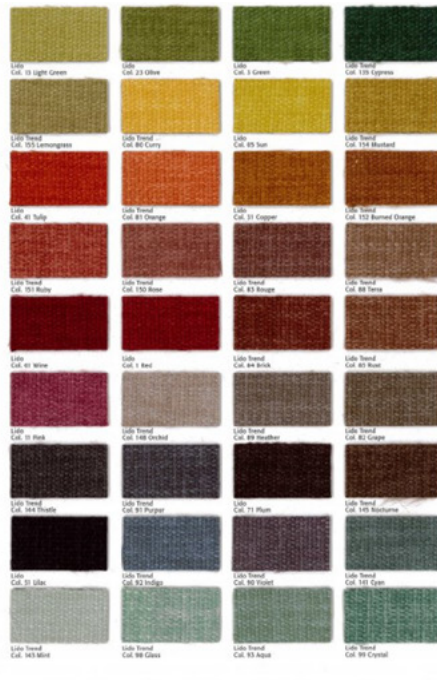
For further information, please visit www.tadpo.com - ISO 14001/9001



Lido/Lido Trend

Lido is a nice fabric that are covered with fleece which gives an extra soft feeling. The collection offers a wide colour range.

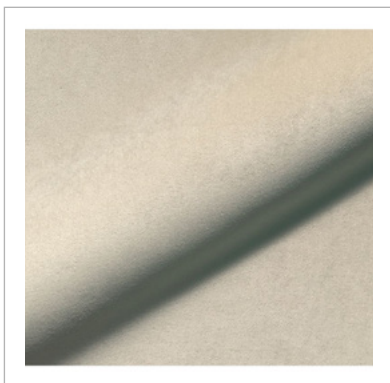
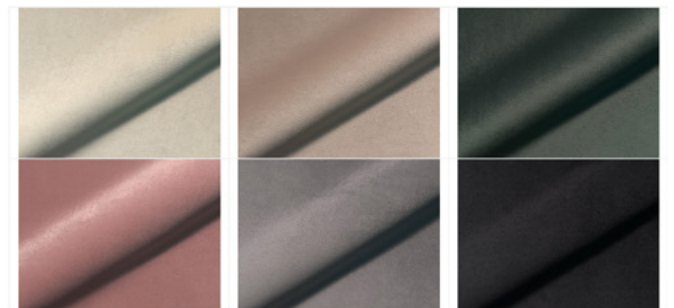
Composition: 100% Polyester
Martindale: 106.000
Washing: 60°



Cino

Composition: 100% polyester
Martindale: 100.000
Washing: 30°

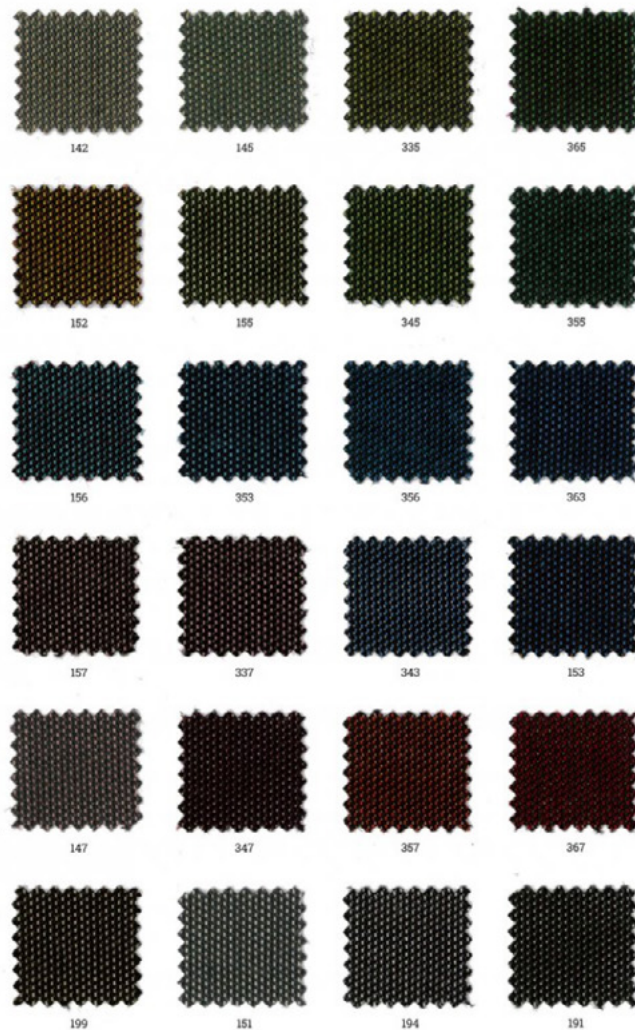
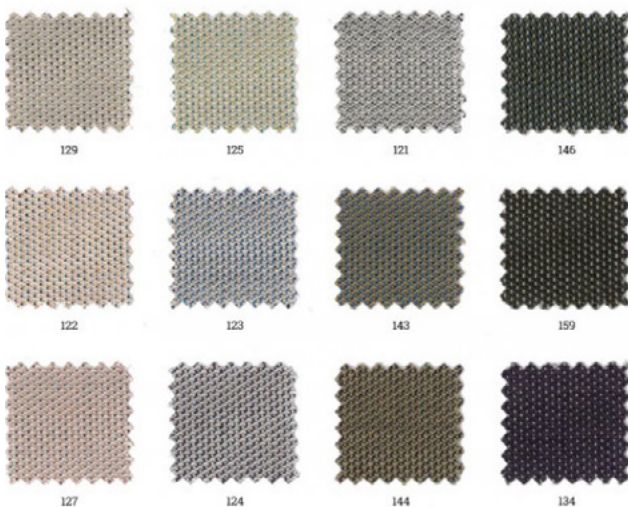
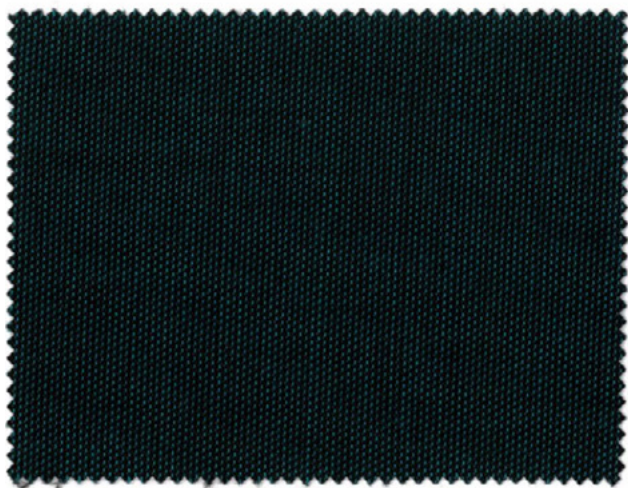
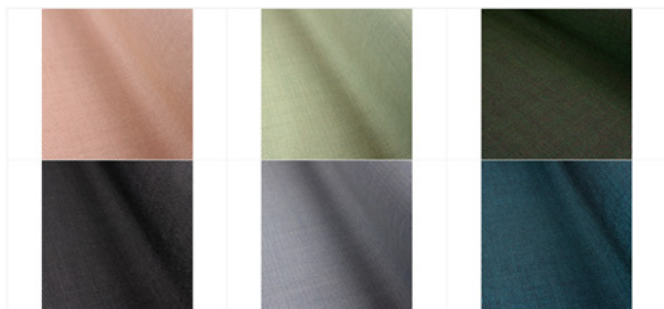
Cino has a Clean Active function which makes it easy to maintain.



Shimmer

Shimmer is a wool collection with a clear but calm surface structure. It creates a visuality that melts into most contexts.

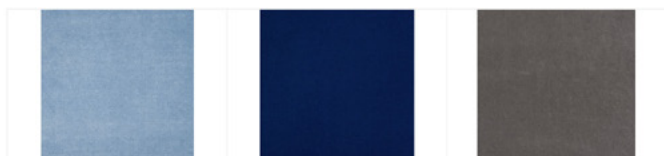
Composition: 85 % Wool, 15 % Polyamide
Martindale: 100.000
Washing: Dry wash



Arona

A simply gorgeous flame retardant velvet with a delightfully smooth and soft handle that belies its high abrasion resistance. Ideal for all contract and residential upholstery projects and dyed in a range of forty stunning colours.

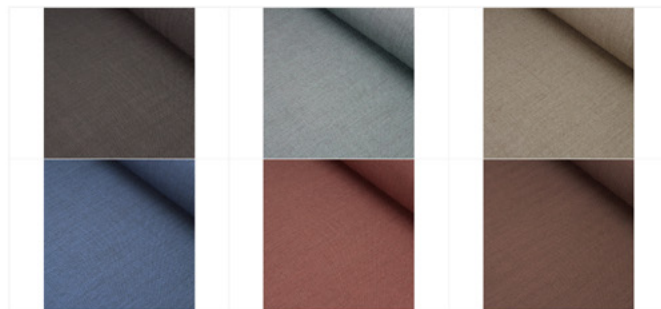
Composition: 100% Polyester
Martindale: 60.000
Washing: 30°



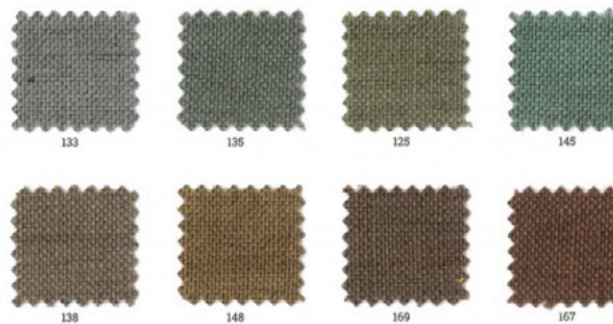
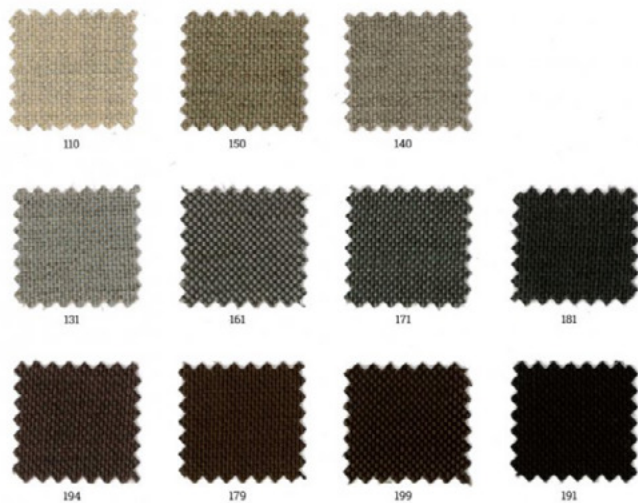
Liv

Liv looks like a classic lacquered linen or wool fabric, but what you get is a washable fabric weave in Trevira CS.

Composition: 100% Trevira CS (Polyester)
Martindale: 100.000
Washing: 60°



148



Enzimi

Composition: 100% lin
Martindale: 25.600
Washing: 40° water wash or dry wash

