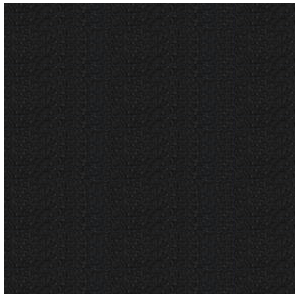


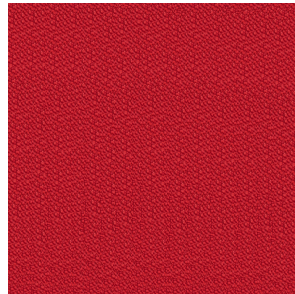
# FABRIC FUSION RANGE

MATERIAL: 100% Polyester, Rated Heavy Commercial Use

---



Jet



Flame

---

Colours may vary due to printing processes and computer screen variations. Please always check actual samples for confirmation.  
Due to constant innovation, Advanta products may be subject to design and specification changes without notice. Copyright © Advanta 2022

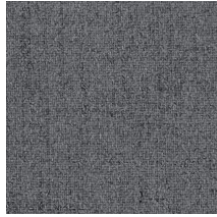
# FABRIC HAWTHORN RANGE

MATERIAL: 100% Polyester, Rated Heavy Commercial Use

---



Blush



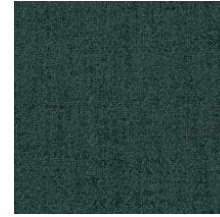
Charcoal



Denim



Earth



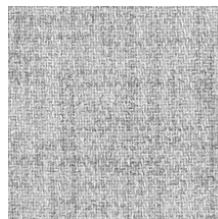
Forest



Manuka



Mink



Mist



Natural



Navy



Olive



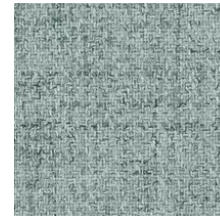
Onyx



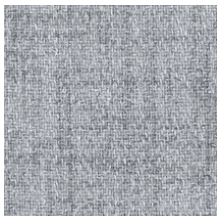
Pumice



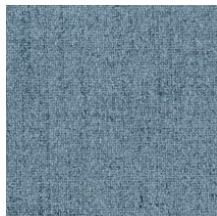
Rosewood



Seafoam



Silver



Sky



Taupe

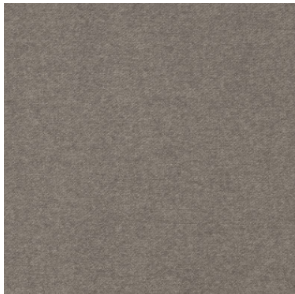
---

Colours may vary due to printing processes and computer screen variations. Please always check actual samples for confirmation.  
Due to constant innovation, Advanta products may be subject to design and specification changes without notice. Copyright © Advanta 2022

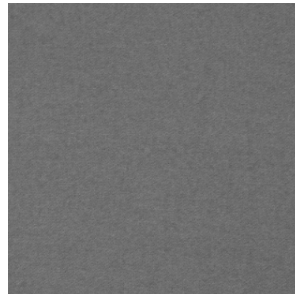
# FABRIC DOLLY RANGE

MATERIAL: 100% Polyester, Rated Heavy Commercial Use

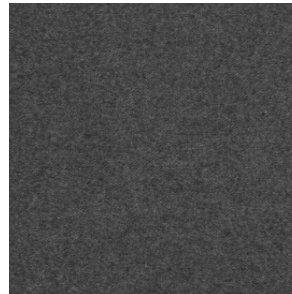
---



Ash



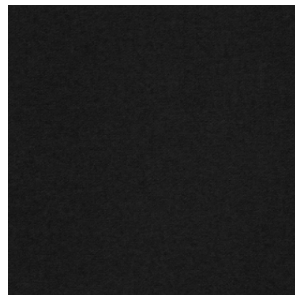
Cement



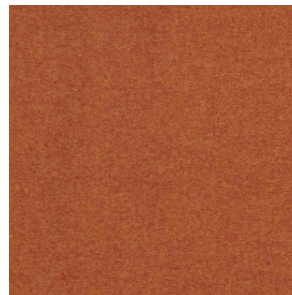
Charcoal



Denim



Ebony



Flame



Mink



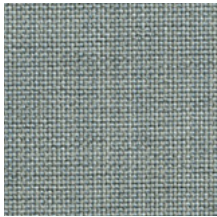
Peacock

---

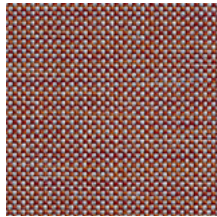
Colours may vary due to printing processes and computer screen variations. Please always check actual samples for confirmation.  
Due to constant innovation, Advanta products may be subject to design and specification changes without notice. Copyright © Advanta 2022

# FABRIC PICCOLO RANGE

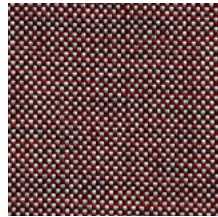
MATERIAL: 100% Polyester, Rated Heavy Commercial Use



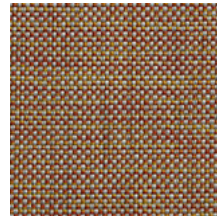
Iced



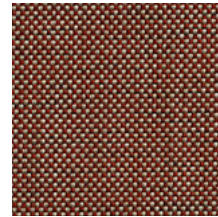
Hot



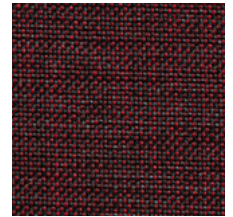
Misto



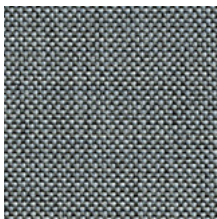
Rio



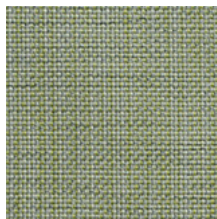
Tamper



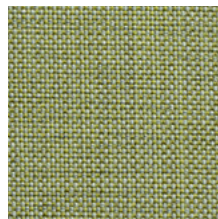
Romano



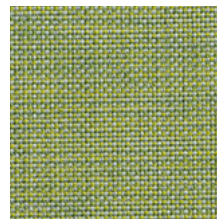
Roast



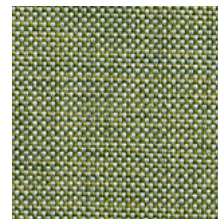
Irish



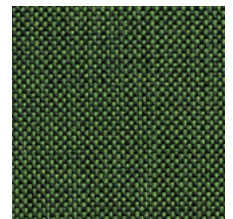
Raf



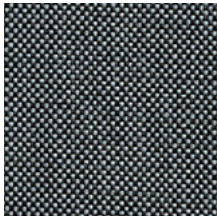
Peaberry



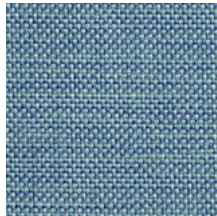
Cuppa



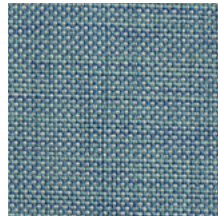
Aroma



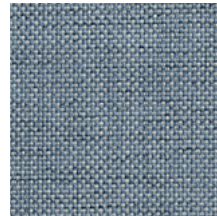
Joe



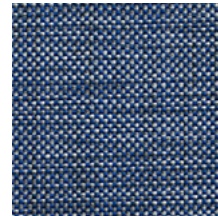
Barista



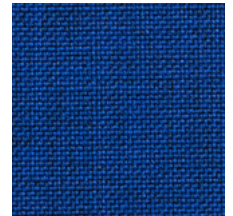
Hopper



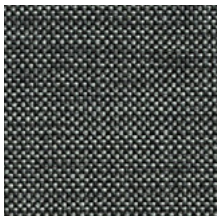
Brewer



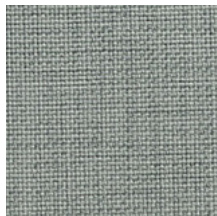
Porta



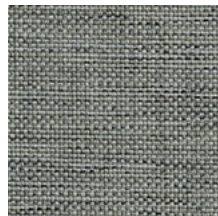
Pod



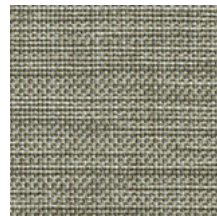
Beans



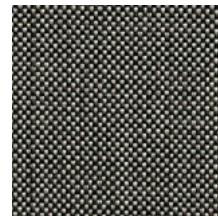
Frappe



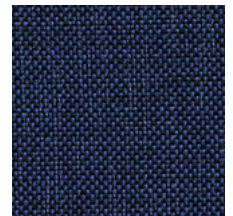
Soy



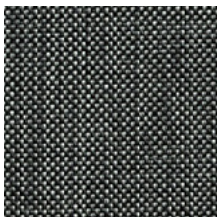
Chai



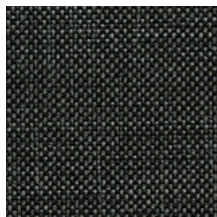
Mocha



Filter



Mac



Arabica



Americano

Colours may vary due to printing processes and computer screen variations. Please always check actual samples for confirmation. Due to constant innovation, Advanta products may be subject to design and specification changes without notice. Copyright © Advanta 2022

# FABRIC AUGUSTUS RANGE

MATERIAL: 70% Wool 25% Polyamide 5% Acrylic, Rated Heavy Commercial Use

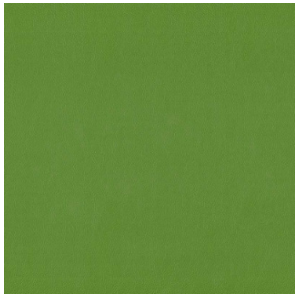


Colours may vary due to printing processes and computer screen variations. Please always check actual samples for confirmation. Due to constant innovation, Advanta products may be subject to design and specification changes without notice. Copyright © Advanta 2022

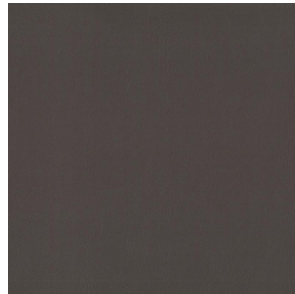
# VINYL LUSTRELL CHARISMA RANGE

MATERIAL: 82% PVC 18% POLYESTER, Rated Heavy Commercial Use

---



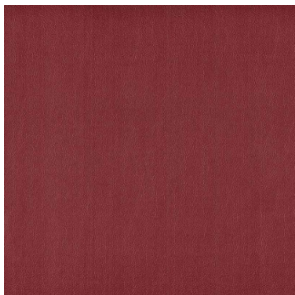
Kiwi



Gunmetal



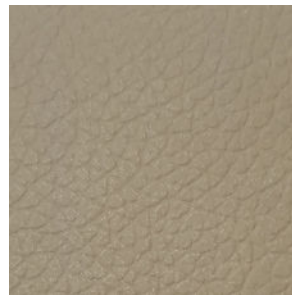
Ocean



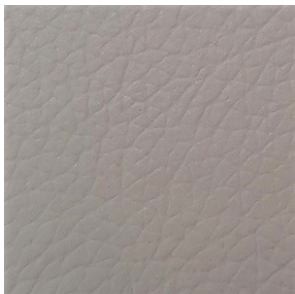
Cabernet



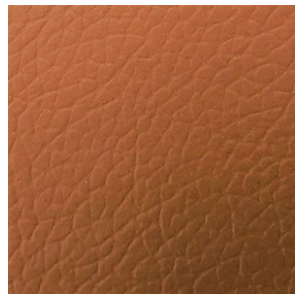
Black



Pumice



Dove



Saddle

---

Colours may vary due to printing processes and computer screen variations. Please always check actual samples for confirmation.  
Due to constant innovation, Advanta products may be subject to design and specification changes without notice. Copyright © Advanta 2022

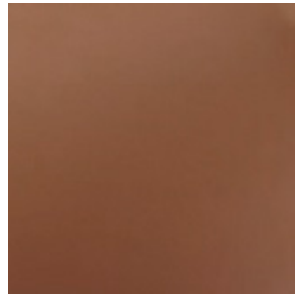
# LEATHER HAUS RANGE

MATERIAL: Semi-Aniline, Premium Genuine Leather, Rated Commercial Use

---



Black



Hickory Tan



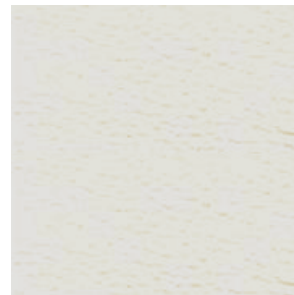
Merlot



Ocean Blue



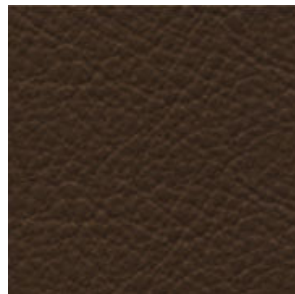
Mink



Snow White



Steel Grey



Coco Brown

---

Colours may vary due to printing processes and computer screen variations. Please always check actual samples for confirmation. Due to constant innovation, Advanta products may be subject to design and specification changes without notice. Copyright © Advanta 2022