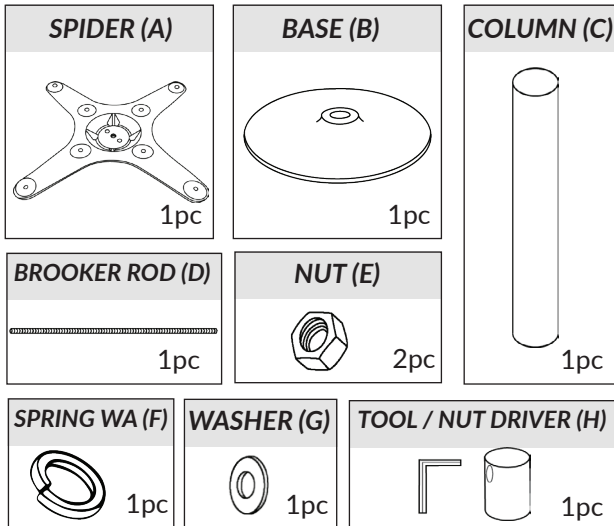


MOON D550MM

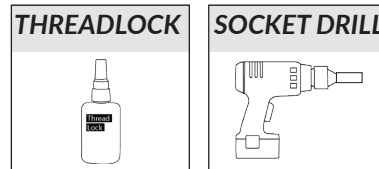
ez ASSEMBLY
INSTRUCTIONS

Anthracite & White Table & Drybar Bases

PARTS:



TOOLS (NOT INCLUDED):



We strongly recommend applying thread lock to the full length of all screws and using a impact drill. Scan the QR code with a phone or tablet to access the assembly video.

WARNING:

Always take care with an impact drill gun, especially when screwing into the spider (cross member).

INSTRUCTIONS: * Step 4: Tighten nut with tools then remove from Brooker Rod.

