



## **Sustainability**

Benefiting people and the planet



## Sustainability

Hotbox is a global leader in designing sustainable innovative hybrid working accessories and luggage. Designed to enable workers to store, carry and organise their space, wherever they work. From mobile desk tidies to versatile backpacks, Hotbox provides consciously crafted solutions for hybrid working.

It's our mission to design, develop and make products that benefit people and the planet. At Hotbox we're committed to the life long journey of creating the most sustainable workspace products possible.

Hotbox products are responsibly designed for the needs of people, places and the planet - made to last and never designed as single-use products.

# Our Goals

We thrive to implement sustainable actions in everything we do:



## Sustainable Sourcing

Source raw materials and supplies from sustainable and ethical raw materials suppliers & through our supply chain. Monitoring sustainability practices throughout their material processing, ensuring they comply to regional sustainability laws and practices.



## Product Sustainability

Design products with a focus on sustainability and durability using eco-friendly materials, design products for reuse and repurpose to ensure product life extension, whilst being recyclable at the end of life.



## Eco-Friendly Packaging

Increase the use of biodegradable and recycled materials in our packaging.



## Waste Reduction

Decrease waste generation and increase recycling rates throughout our supply chain from raw material suppliers to our logistics partners. The quality and design of our products enables reuse and repurpose, with all materials being recyclable at the end of life.



## Water Conservation

Working with our supply chain partners we aim to reduce water usage and promote water conservation practices. Ensuring all dyes used are environmentally friendly and do not enter local water sources.



## Carbon Footprint Reduction

Reduce the overall carbon footprint of our manufacturing process by working with our supply chain to optimise transportation, invest in cleaner energy sources, and encourage employees to use public transport where possible.



## Employee Engagement

Foster a culture of sustainability among employees by providing training on sustainability practices, involve employees in green initiatives, and recognise and reward eco-friendly behaviours.



## Community Outreach

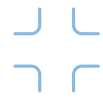
Contribute positively to the local community and environment by supporting local charities and environmental organisations.



## Regular Assessment and Improvement

Continuously assess and improve sustainability efforts by conducting supply chain sustainability audits, tracking progress towards goals, and adapting strategies based on the findings.

As a business, Hotbox, endeavours to reduce its carbon footprint wherever possible. We are conscious that our most impactful areas to focus on are our sustainable material sources for our products and our supply chain profile, so this is where we will showcase our sustainability journey so far.



## Sustainable Sourcing & the Circular Economy

Plastics are essential in providing solutions to tomorrow's challenges. As lightweight, hygienic, and durable materials, they play a vital role in products used around the globe, every day. Unfortunately, the mismanagement of plastic waste has reached a tipping point. Society, governments, and industry are accelerating efforts to close the loop and prevent plastic leakage to the environment, keeping plastics circulating in the economy through recycling and reuse. At Hotbox, we believe circularity is critical to help end plastic waste, and it also offers strong economic, social and climate benefits.

At Hotbox, we endeavour to source 100% Post Consumer Recycled Plastic Waste or natural materials for our products.. Removing polystyrene and consumer used Single Use Plastics (SUPs) from being sent to landfill assisting in creating a Circular Economy.





## The Facts



# 10 Million

tons of plastic are dumped in our oceans annually. That's equal to more than a garbage truck load every minute!

# Less than 9% of all plastic gets recycled

Humans eat over  
**40lbs**  
of plastic in their lifetime



# 100%

of mussels tested have contained microplastics

# 50%

of all plastic produced (380 million tons per year) is for single-use purposes - used for just minutes and then thrown away



# “There will be more plastic in our oceans than fish by 2050”

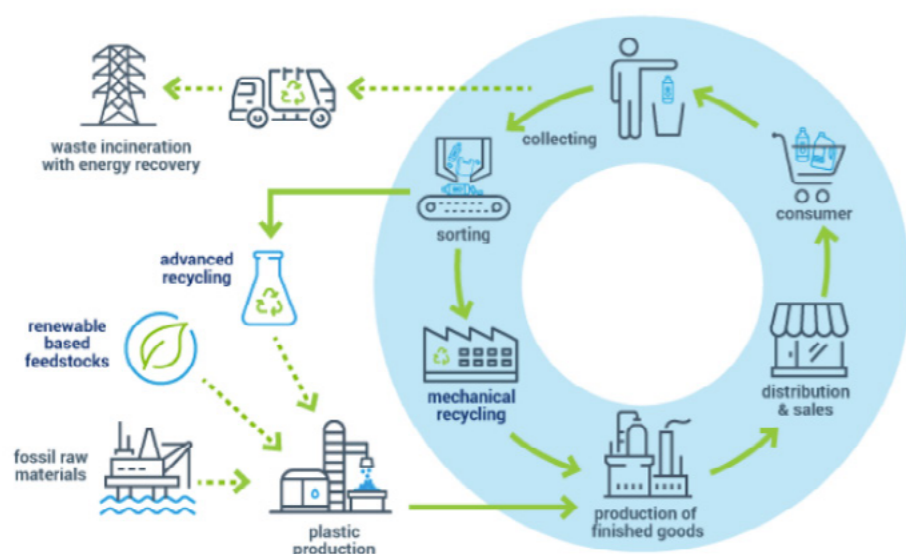
The Ellen MacArthur Foundation

# One Million

marine animals are killed by plastic pollution every year

## Hotbox 1R & Hotbox 4

Hotbox 1R and Hotbox 4 are both made from CirculenRecover certified 100% Post Consumer Recycled Polypropylene. Created from ocean & landfill plastic waste through a mechanical recycling process; By processing the plastic waste through the shortest recycling loop, a lower carbon footprint can be achieved, helping to address the global challenges of plastic waste in the environment and climate change. We are supporting the reduction of plastic waste through the use of recycled content, and a lower carbon footprint through the use of renewable-based content as compared to Polymers from fossil-based sources.



Source: PlasticsEurope

**According to the Ellen MacArthur Foundation,<sup>1</sup> achieving a circular economy for plastics by 2040 has the potential to reduce the annual volume of plastics entering our oceans by 80%, reduce GHG emissions by 25%, generate a savings of \$200 billion per year, and create 700,000 net additional jobs.**

Source: <https://ellenmacarthurfoundation.org/topics/plastics/overview>

### Hotbox 1R

100% Post Consumer Recycled Polypropylene

#### Colours



Recycled Cardboard

Made in Italy



### Hotbox 4

100% Post Consumer Recycled Polypropylene

#### Colours



Recycled Cardboard

Made in Italy



## Adapt

The 100% Post Consumer Recycled Polyester (rPET) fabric used for our Adapt backpack is Global Recycled Standard certified. The Global Recycled Standard is a voluntary product standard for tracking and verifying the content of recycled materials in a final product. The standard applies to the full supply chain and addresses traceability, environmental principles, social requirements, chemical content and labelling. It also sets requirements for third-party certification of recycled content, chain of custody, social and environmental practices, and chemical restrictions.

The standard supports companies looking to verify their recycled content of their products as well as responsible social, environmental and chemical practices in the production of these products.

Global Recycled Standard provides Hotbox with a tool for more accurate labelling, encourages innovation in the use of reclaimed materials, and establishes more transparency in our supply chain.

### Adapt

100% Post Consumer Recycled Polyester (rPET)

#### Colours



Biodegradable bags

Made in Indonesia



## Shuttle, Flow, Folio & Utility Pouch

Having Bluesign Approved status on our textiles products ensures that each process throughout the textile's manufacturing journey, is as sustainable as possible.

The Bluesign is a certification system that ensures the production of textiles with minimal impact on people and the environment through:

**Environmental Sustainability:** The certification ensures that harmful substances are eliminated from the very beginning of the manufacturing process.

**Reduced Environmental Impact:** Analysing and managing environmental risks throughout the textile production process. This leads to a significant reduction in the use of chemicals, water, and energy, ultimately lowering the environmental impact.

**Health and Safety:** Bluesign certification guarantees that the textile products are manufactured without harmful chemicals. This ensures the safety and well-being of both consumers and the workers involved in the production process.

**Conservation of Resources:** By optimizing the production process and reducing the use of resources such as water and energy, our textiles contribute to the conservation of valuable natural resources.

**High Quality:** The certification ensures that the textiles are not only environmentally friendly but also durable and of superior quality, providing value for customers.

**Transparent Supply Chain:** This means that consumers can have confidence in the origin and production process of the textiles they purchase.

**Compliance with Regulations:** Our textiles comply with legal regulations and standards regarding environmental and consumer safety. This ensures that the textiles meet or exceed the necessary requirements.

By choosing Bluesign Approved textiles, you are supporting environmentally responsible practices and contribute to a more sustainable and eco-friendly textile industry.

You can trust that Bluesign labelled textiles and products from the polymer inputs to the final production have met the strictest standards throughout the supply chain.



### Shuttle, Flow, Folio & Utility Pouch

Recycled polyester interior  
Bluesign approved polyester

#### Colours



Biodegradable bags

Made in Indonesia





## Hotbox Origin & Hotbox 1

Hotbox Origin was the first mobile desk caddy to be designed and made in 2002, and is still going strong today. Back in 2002 there were fewer material options compared to today, however being eco-friendly was still on the agenda, so Origin was designed to easily split into its parts for recycling at the end of life. The original Hotbox 1 colours were also designed for the soft handle to be removed, so both parts could be recycled at the end of life.

### Hotbox Origin

Polypropylene outer with  
Aluminium inner

#### Colours



Made in China



### Hotbox 1

100% Polypropylene  
Recycled Polypropylene - Grey

#### Colours



Inner Carton - 34% Recycled Cardboard  
Outer Carton - 83% Recycled Cardboard

Made in Italy



# Hotbox 2 Fabric Covers & Utility Case

## EU Ecolabel Certified

Our Hotbox 2 Fabric Covers, plus our Utility Case textiles are certified to the EU Ecolabel which helps identify products and services that have a reduced environmental impact throughout their life cycle, from the extraction of raw material through to production, use and disposal. Recognised throughout Europe, the EU Ecolabel is a voluntary label promoting environmental excellence.

## Indoor Advantage Gold

Our Hotbox 2 Fabric covers, plus our Utility Case textiles are certified to the SCS Indoor Advantage certification program, is an air quality certificate designed for interior building materials, furnishings and textiles. It qualifies for many building rating systems, including LEED v4, BREEAM, WELL Building, and Living Building Challenge.



## Hotbox 2

Grey - 60% Recycled Polypropylene  
White - Polypropylene

### Colours



Recycled Cardboard

Made in Italy



## Hotbox 2 Flax Fabric Covers

75% Virgin Wool  
25% Flax

### Colours



Biodegradable bags

Made in Lithuania



## Utility Case

60% Virgin Wool  
40% True Hemp

### Colours



Biodegradable bags

Made in Lithuania



## Hotbox 2 Quest Covers

***“Every year, 10 million tonnes of plastic is dumped into our oceans”***

***- Seaqual***

Seaqual textiles are fabrics made from recycled plastic waste collected from the oceans. By sourcing Seaqual fabrics, Hotbox are helping to clean up plastic waste from our oceans, contributing to marine conservation and reducing the harmful impact of plastic on marine life. This also assists in reducing the demand for new raw materials and promoting a circular economy. Producing textiles from recycled plastic generally requires less energy and resources compared to creating fabrics from virgin materials, reducing the overall environmental footprint. By choosing Seaqual textiles, you are contributing to a cleaner environment, promoting sustainable practices, and supporting the ongoing efforts to reduce plastic pollution in our oceans.

### Hotbox 2 Quest Fabric Covers

100% post-consumer recycled polyester including 75% SEAQUAL® YARN

#### Colours



Biodegradable bags

Made in Lithuania





## Supply Chain

We continually monitor our supply chain's progress and review environmental performance on a regular basis.

### Carbon Footprint Reduction

Our logistics partners are part of the SME Climate Commitment (SME Climate Hub) which gives them access to a support network to further reduce their carbon footprint in line with targets and mitigate their impact on the planet.

Through the use of a transport management system, our logistic partners are committed to reducing the level of CO2 emitted by their fleet vehicles. All vehicles are fitted with tracking devices which monitor driving behaviour related to fuel efficiency and which reduce unnecessary mileage by selecting the most effective routing. Their vehicles are regularly serviced, and all drivers are required to do various maintenance checks on a daily / weekly basis to ensure that vehicle engine emissions are minimised where possible. The addition of e-Transits to their fleet is a really positive move towards achieving their company's target of net-zero emissions by 2030. This signals the start of moving away from fossil fuel powered vehicles.

All clients are given the opportunity to subscribe to our electronic green invoicing scheme and are encouraged to designate a recipient email address for the forwarding of invoices, statements and reminders from our accounts department. This helps to minimise both our and the clients carbon footprint by cutting down on paper copies of invoices and statements, and the miles travelled to deliver them. On the accounts payable side we have created the facility within our own software to receive, allocate and approve supplier invoices electronically thus negating the need for paper copies and postal services.

All of our employees are encouraged to work on a Hybrid basis, reducing our or visiting clients commuting carbon footprint. When employees are working in the office they consider travel arrangements through use of public transport, and walking/cycling to and from work.

### Waste Reduction

In our supply chain all cardboard and plastic waste is baled using a Waste Press and collected and processed for full recycling. All recycling is certified on collection.

As part of our supply chain, we have a full pallet recycling service, re-using all pallets (standard, printers and euros) throughout the warehouse and distribution network. All treated pallets are kept for export services and all CHEP pallets are audited each week through the CHEP Pallet scheme.

Broken pallets in the UK that can't be reused are collected by The Useful Wood Company. They recycle and reuse waste wood which helps to reduce deforestation and the need for landfill, which in turn helps to prevent the release of CO2 and methane into the atmosphere preventing damage to the environment. They are also a social enterprise company offering people who cannot access the job market at present the opportunity to gain experience of a real work environment, gaining confidence and useful skills for the future.

We fully recycle and do not use single use plastics.

**By sourcing Hotbox products you are contributing to the many causes we invest in and assist in making the world a better place to live.**



